

RBM15B Polyclonal Antibody
Purified Rabbit Polyclonal Antibody (Pab)
Catalog # AP57963**Specification**

RBM15B Polyclonal Antibody - Product Information

Application	IHC-P, IHC-F, IF, ICC, E
Primary Accession	Q8NDT2
Reactivity	Rat, Pig, Dog, Bovine
Host	Rabbit
Clonality	Polyclonal
Calculated MW	97205

RBM15B Polyclonal Antibody - Additional Information**Gene ID** 29890**Other Names**

Putative RNA-binding protein 15B, One-twenty two protein 3, HsOTT3, HuOTT3, RNA-binding motif protein 15B, RB15B

Dilution

IHC-P ~ ~ N/A
IHC-F ~ ~ N/A
IF ~ ~ 1:50 ~ 200
ICC ~ ~ N/A
E ~ ~ N/A

Format

0.01M TBS(pH7.4), 0.09% (W/V) sodium azide and 50% Glyce

Storage

Store at -20 °C for one year. Avoid repeated freeze/thaw cycles. When reconstituted in sterile pH 7.4 0.01M PBS or diluent of antibody the antibody is stable for at least two weeks at 2-4 °C.

RBM15B Polyclonal Antibody - Protein Information**Name** RB15B**Function**

RNA-binding protein that acts as a key regulator of N6- methyladenosine (m6A) methylation of RNAs, thereby regulating different processes, such as alternative splicing of mRNAs and X chromosome inactivation mediated by Xist RNA (PubMed: [16129689](http://www.uniprot.org/citations/16129689), PubMed: [27602518](http://www.uniprot.org/citations/27602518)). Associated component of the WMM complex, a complex that mediates N6- methyladenosine (m6A) methylation of RNAs, a modification that plays a role in the efficiency of mRNA splicing and RNA processing (PubMed: [27602518](http://www.uniprot.org/citations/27602518) target="_blank">27602518). Plays a key role in m6A methylation, possibly by binding target

RNAs and recruiting the WMM complex (PubMed:27602518). Involved in random X inactivation mediated by Xist RNA: acts by binding Xist RNA and recruiting the WMM complex, which mediates m6A methylation, leading to target YTHDC1 reader on Xist RNA and promoting transcription repression activity of Xist (PubMed:27602518). Functions in the regulation of alternative or illicit splicing, possibly by regulating m6A methylation (PubMed:16129689). Inhibits pre-mRNA splicing (PubMed:21044963). Also functions as a mRNA export factor by acting as a cofactor for the nuclear export receptor NXF1 (PubMed:19586903).

Cellular Location

Nucleus, nucleoplasm. Nucleus speckle. Nucleus envelope. Note=Colocalizes with BMLF1 in the nucleus. Localized in the nucleoplasm with a granular staining pattern and excluded from the nucleoli.

Tissue Location

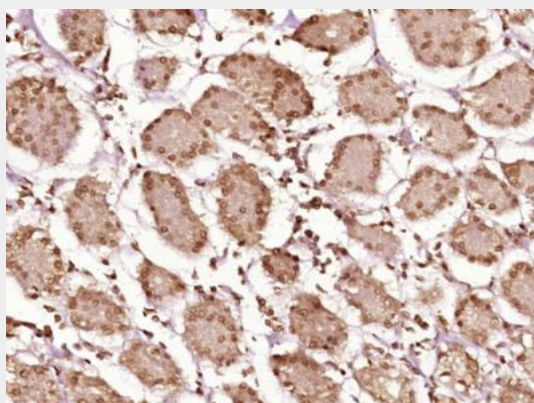
Ubiquitously expressed.

RBM15B Polyclonal Antibody - Protocols

Provided below are standard protocols that you may find useful for product applications.

- [Western Blot](#)
- [Blocking Peptides](#)
- [Dot Blot](#)
- [Immunohistochemistry](#)
- [Immunofluorescence](#)
- [Immunoprecipitation](#)
- [Flow Cytometry](#)
- [Cell Culture](#)

RBM15B Polyclonal Antibody - Images



Paraformaldehyde-fixed, paraffin embedded (Human stomach); Antigen retrieval by boiling in sodium citrate buffer (pH6.0) for 15min; Block endogenous peroxidase by 3% hydrogen peroxide for 20 minutes; Blocking buffer (normal goat serum) at 37°C for 30min; Antibody incubation with (RBM15B) Polyclonal Antibody, Unconjugated (bs-21289R) at 1:400 overnight at 4°C, followed by operating according to SP Kit(Rabbit) (sp-0023) instructions and DAB staining.