

MTNR1B Polyclonal Antibody
Purified Rabbit Polyclonal Antibody (Pab)
Catalog # AP57968**Specification**

MTNR1B Polyclonal Antibody - Product Information

| | |
|-------------------|------------------------------|
| Application | WB, IHC-P, IHC-F, IF, ICC, E |
| Primary Accession | P49286 |
| Reactivity | Rat |
| Host | Rabbit |
| Clonality | Polyclonal |
| Calculated MW | 40188 |

MTNR1B Polyclonal Antibody - Additional Information**Gene ID** 4544**Other Names**

Melatonin receptor type 1B, Mel-1B-R, Mel1b receptor, MTNR1B

Dilution

WB~~1:1000<br \>IHC-P~~N/A<br \>IHC-F~~N/A<br \>IF~~1:50~200<br \>ICC~~N/A<br \>E~~N/A

Format

0.01M TBS(pH7.4), 0.09% (W/V) sodium azide and 50% Glyce

Storage

Store at -20 °C for one year. Avoid repeated freeze/thaw cycles. When reconstituted in sterile pH 7.4 0.01M PBS or diluent of antibody the antibody is stable for at least two weeks at 2-4 °C.

MTNR1B Polyclonal Antibody - Protein Information**Name** MTNR1B**Function**

High affinity receptor for melatonin. Likely to mediate the reproductive and circadian actions of melatonin. The activity of this receptor is mediated by pertussis toxin sensitive G proteins that inhibit adenylate cyclase activity.

Cellular Location

Cell membrane; Multi-pass membrane protein.

Tissue Location

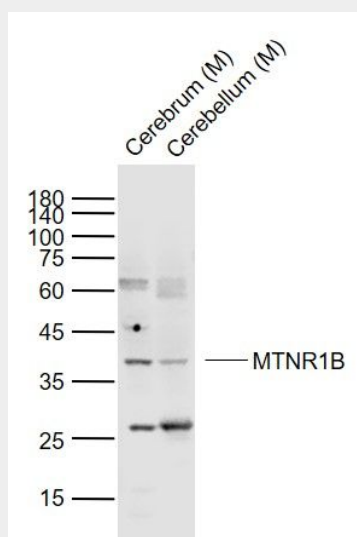
Expressed in retina and less in brain and hippocampus.

MTNR1B Polyclonal Antibody - Protocols

Provided below are standard protocols that you may find useful for product applications.

- [Western Blot](#)
- [Blocking Peptides](#)
- [Dot Blot](#)
- [Immunohistochemistry](#)
- [Immunofluorescence](#)
- [Immunoprecipitation](#)
- [Flow Cytometry](#)
- [Cell Culture](#)

MTNR1B Polyclonal Antibody - Images



Sample:

Lane 1: Cerebrum (Mouse) Lysate at 40 ug

Lane 2: Cerebellum (Mouse) Lysate at 40 ug

Primary: Anti-MTNR1B (bs-21511R) at 1/1000 dilution

Secondary: IRDye800CW Goat Anti-Rabbit IgG at 1/20000 dilution

Predicted band size: 40 kD

Observed band size: 38 kD