

GAS2L3 Polyclonal Antibody
Purified Rabbit Polyclonal Antibody (Pab)
Catalog # AP58000

Specification

GAS2L3 Polyclonal Antibody - Product Information

Application	IHC-P, IHC-F, IF, ICC
Primary Accession	Q86XJ1
Reactivity	Rat, Dog
Host	Rabbit
Clonality	Polyclonal
Calculated MW	75 KDa
Physical State	Liquid
Immunogen	KLH conjugated synthetic peptide derived from human GAS2L3
Epitope Specificity	251-350/694
Isotype	IgG
Purity	
affinity purified by Protein A	
Buffer	0.01M TBS (pH7.4) with 1% BSA, 0.02% Proclin300 and 50% Glycerol.
SUBCELLULAR LOCATION	Cytoplasm
SIMILARITY	Belongs to the GAS2 family. Contains 1 CH (calponin-homology) domain. Contains 1 GAR domain.
SUBUNIT	Interacts (via CH domain) with F-actin. Interacts (via C terminus) with microtubules.
Important Note	This product as supplied is intended for research use only, not for use in human, therapeutic or diagnostic applications.

Background Descriptions

GAS2L3 (Growth arrest-specific 2 like 3) a member of the GAS2 family, is similar in sequence to the mouse protein GAS2, an actin-associated protein expressed at high levels in growth-arrested cells. The specific function of this protein is unknown.

GAS2L3 Polyclonal Antibody - Additional Information

Gene ID 283431

Other Names

GAS2-like protein 3, Growth arrest-specific protein 2-like 3, GAS2L3

Target/Specificity

Expressed in the pancreas, heart, liver, placenta, brain, skeletal muscle, kidney and lung.

Dilution

IHC-P~~N/A

=["dilution_IHC-F">IHC-F](#)~N/A<br \><span class
=["dilution_IF">IF](#)~1:50~200<br \>ICC](#)~N/A

Format

0.01M TBS(pH7.4), 0.09% (W/V) sodium azide and 50% Glyce

Storage

Store at -20 °C for one year. Avoid repeated freeze/thaw cycles. When reconstituted in sterile pH 7.4 0.01M PBS or diluent of antibody the antibody is stable for at least two weeks at 2-4 °C.

GAS2L3 Polyclonal Antibody - Protein Information

Name GAS2L3

Function

Cytoskeletal linker protein. May promote and stabilize the formation of the actin and microtubule network.

Cellular Location

Cytoplasm. Cytoplasm, cytoskeleton. Note=Localizes to microtubule and actin cytoskeletons.

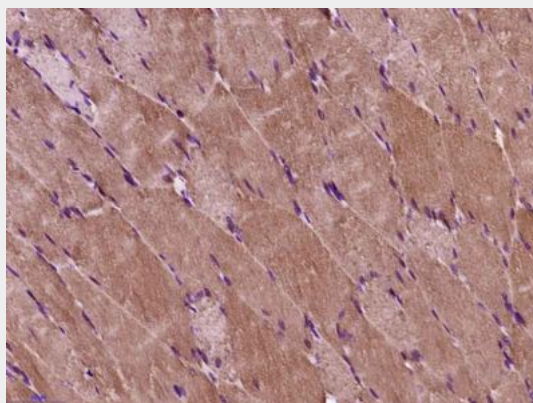
Tissue Location

Expressed in the pancreas, heart, liver, placenta, brain, skeletal muscle, kidney and lung.

GAS2L3 Polyclonal Antibody - Protocols

Provided below are standard protocols that you may find useful for product applications.

- [Western Blot](#)
- [Blocking Peptides](#)
- [Dot Blot](#)
- [Immunohistochemistry](#)
- [Immunofluorescence](#)
- [Immunoprecipitation](#)
- [Flow Cytometry](#)
- [Cell Culture](#)

GAS2L3 Polyclonal Antibody - Images

Paraformaldehyde-fixed, paraffin embedded (Rat skeletal muscle); Antigen retrieval by boiling in sodium citrate buffer (pH6.0) for 15min; Block endogenous peroxidase by 3% hydrogen peroxide for 20 minutes; Blocking buffer (normal goat serum) at 37°C for 30min; Antibody incubation with (GAS2L3) Polyclonal Antibody, Unconjugated (bs-23297R) at 1:400 overnight at 4°C, followed by operating according to SP Kit(Rabbit) (sp-0023) instructions and DAB staining.