

**PDE5A Polyclonal Antibody**  
**Purified Rabbit Polyclonal Antibody (Pab)**  
**Catalog # AP58003****Specification****PDE5A Polyclonal Antibody - Product Information**

Application	WB, IHC-P, IHC-F, IF, E
Primary Accession	<a href="#">O76074</a>
Reactivity	Rat, Pig, Dog, Bovine
Host	Rabbit
Clonality	Polyclonal
Calculated MW	99985

**PDE5A Polyclonal Antibody - Additional Information****Gene ID** 8654**Other Names**

cGMP-specific 3', 5'-cyclic phosphodiesterase, 3.1.4.35, cGMP-binding cGMP-specific phosphodiesterase, CGB-PDE, PDE5A, PDE5

**Dilution**

<span class = "dilution\_WB">WB~~1:1000</span><br \><span class = "dilution\_IHC-P">IHC-P~~N/A</span><br \><span class = "dilution\_IHC-F">IHC-F~~N/A</span><br \><span class = "dilution\_IF">IF~~1:50~200</span><br \><span class = "dilution\_E">E~~N/A</span>

**Format**

0.01M TBS(pH7.4), 0.09% (W/V) sodium azide and 50% Glyce

**Storage**

Store at -20 °C for one year. Avoid repeated freeze/thaw cycles. When reconstituted in sterile pH 7.4 0.01M PBS or diluent of antibody the antibody is stable for at least two weeks at 2-4 °C.

**PDE5A Polyclonal Antibody - Protein Information****Name** PDE5A ([HGNC:8784](#))**Synonyms** PDE5**Function**

Plays a role in signal transduction by regulating the intracellular concentration of cyclic nucleotides. This phosphodiesterase catalyzes the specific hydrolysis of cGMP to 5'-GMP (PubMed:<a href="http://www.uniprot.org/citations/15489334" target="\_blank">15489334</a>, PubMed:<a href="http://www.uniprot.org/citations/9714779" target="\_blank">9714779</a>). Specifically regulates nitric-oxide- generated cGMP (PubMed:<a href="http://www.uniprot.org/citations/15489334" target="\_blank">15489334</a>).

### Tissue Location

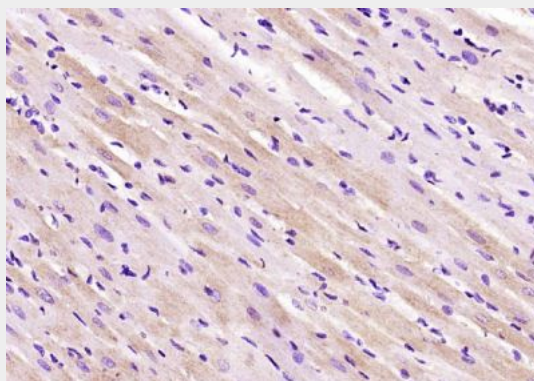
Expressed in aortic smooth muscle cells, heart, placenta, skeletal muscle and pancreas and, to a much lesser extent, in brain, liver and lung

### PDE5A Polyclonal Antibody - Protocols

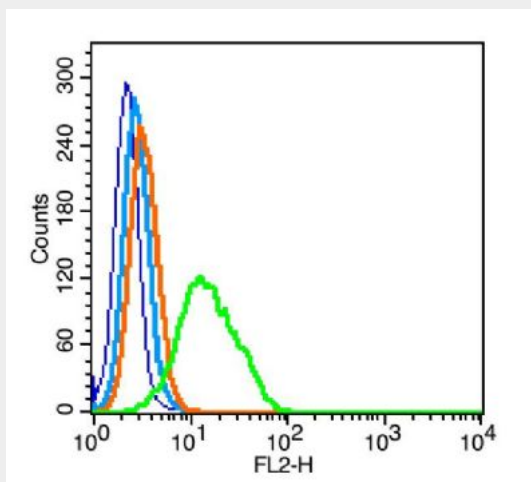
Provided below are standard protocols that you may find useful for product applications.

- [Western Blot](#)
- [Blocking Peptides](#)
- [Dot Blot](#)
- [Immunohistochemistry](#)
- [Immunofluorescence](#)
- [Immunoprecipitation](#)
- [Flow Cytometry](#)
- [Cell Culture](#)

### PDE5A Polyclonal Antibody - Images



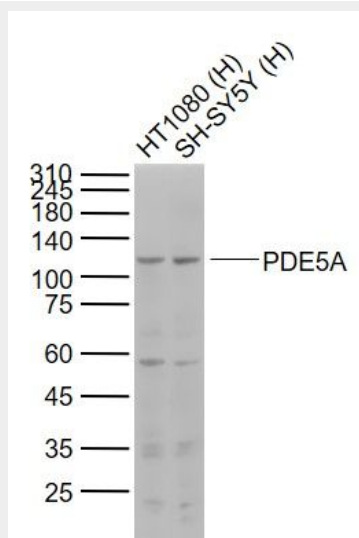
Paraformaldehyde-fixed, paraffin embedded (rat heart tissue); Antigen retrieval by boiling in sodium citrate buffer (pH6.0) for 15min; Block endogenous peroxidase by 3% hydrogen peroxide for 20 minutes; Blocking buffer (normal goat serum) at 37°C for 30min; Antibody incubation with (PDE5A) Polyclonal Antibody, Unconjugated (bs-2349R) at 1400 overnight at 4°C, followed by operating according to SP Kit(Rabbit) (sp-0023) instructions and DAB staining.



Blank control: RSC96(blue), the cells were fixed with 2% paraformaldehyde (10 min) and then

permeabilized with ice-cold 90% methanol for 30 min on ice.

Isotype Control Antibody: Rabbit IgG(orange) ; Secondary Antibody: Goat anti-rabbit IgG-PE(white blue), Dilution: 1:200 in 1 X PBS containing 0.5% BSA ; Primary Antibody Dilution: 0.2  $\mu$ g in 100  $\mu$ L 1X PBS containing 0.5% BSA(green).



**Sample:**

Lane 1: HT1080 (Human) Cell Lysate at 30  $\mu$ g

Lane 2: SH-SY5Y (Human) Cell Lysate at 30  $\mu$ g

Primary: Anti-PDE5A (bs-2349R) at 1/1000 dilution

Secondary: IRDye800CW Goat Anti-Rabbit IgG at 1/20000 dilution

Predicted band size: 98 kD

Observed band size: 110 kD