

Cytochrome P450 2D1 Polyclonal Antibody
Purified Rabbit Polyclonal Antibody (Pab)
Catalog # AP58008

Specification

Cytochrome P450 2D1 Polyclonal Antibody - Product Information

Application	WB, IHC-P, IHC-F, IF, ICC, E
Primary Accession	P10633
Reactivity	Rat
Host	Rabbit
Clonality	Polyclonal
Calculated MW	55 KDa
Physical State	Liquid
Immunogen	KLH conjugated synthetic peptide derived from rat Cytochrome P450 2D1
Epitope Specificity	101-200/504
Purity	
affinity purified by Protein A	
Buffer	0.01M TBS (pH7.4) with 1% BSA, 0.02% Proclin300 and 50% Glycerol.
SUBCELLULAR LOCATION	Endoplasmic reticulum membrane; Peripheral membrane protein. Microsome membrane; Peripheral membrane protein. Belongs to the cytochrome P450 family.
SIMILARITY	This product as supplied is intended for research use only, not for use in human, therapeutic or diagnostic applications.
Important Note	

Background Descriptions

The cytochrome P450 superfamily of heme thiolate mono oxygenases play a key role in the oxidative metabolism of many endogenous and exogenous molecules, and are classified by their primary structure into four main groups. It is an ancient superfamily, which has been identified in prokaryotes and in many types of eukaryotic cells. The CYP2A sub family is found in the liver, and recently in the nasal mucosa where they are involved in the metabolism of inhaled xenobiotics and nicotine. CYP2B proteins are found in the liver, where they are involved in the metabolism of hepatic drugs, and in the lung and brain, whereas the CYP2C proteins are involved in the metabolism of anti depressants. CYP2E1 is alcohol inducible, and found principally in the liver.

Cytochrome P450 2D1 Polyclonal Antibody - Additional Information

Gene ID 266684

Other Names

Cytochrome P450 2D1, 1.14.14.1, CYP1D1, Cytochrome P450-CMF1A, Cytochrome P450-DB1, Cytochrome P450-UT-7, Debrisoquine 4-hydroxylase, Cyp2d1, Cyp2d-1, Cyp2d9

Dilution

WB~~1:1000<br \>IHC-P~~N/A<br \><span class =

=IHC-F~~N/A<br \>IF~~1:50~200<br \>ICC~~N/A<br \>E~~N/A

Format

0.01M TBS(pH7.4), 0.09% (W/V) sodium azide and 50% Glyce

Storage

Store at -20 °C for one year. Avoid repeated freeze/thaw cycles. When reconstituted in sterile pH 7.4 0.01M PBS or diluent of antibody the antibody is stable for at least two weeks at 2-4 °C.

Cytochrome P450 2D1 Polyclonal Antibody - Protein Information

Name Cyp2d1

Synonyms Cyp2d-1, Cyp2d9

Function

Cytochromes P450 are a group of heme-thiolate monooxygenases. In liver microsomes, this enzyme is involved in an NADPH-dependent electron transport pathway. It oxidizes a variety of structurally unrelated compounds, including steroids, fatty acids, and xenobiotics.

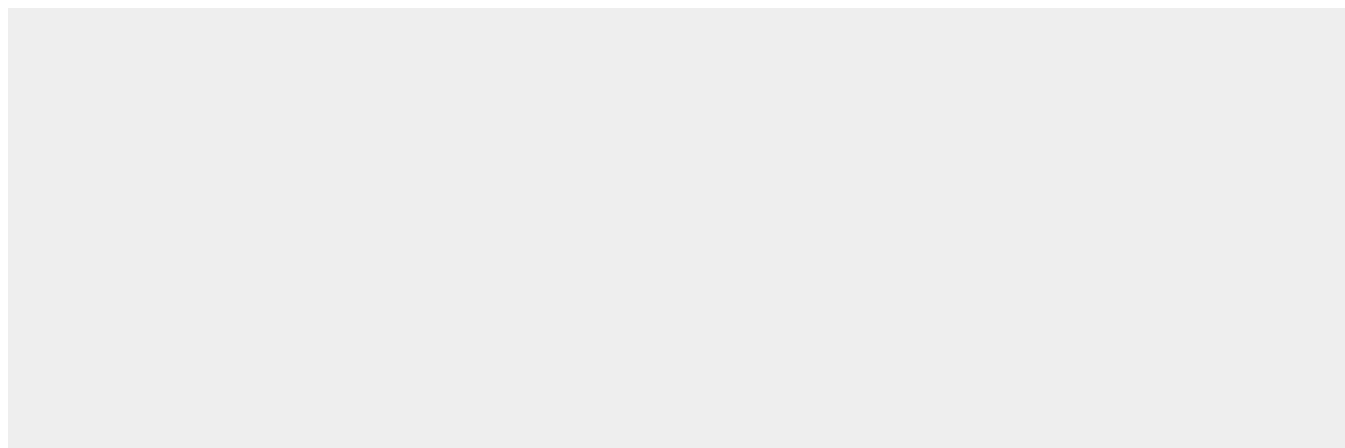
Cellular Location

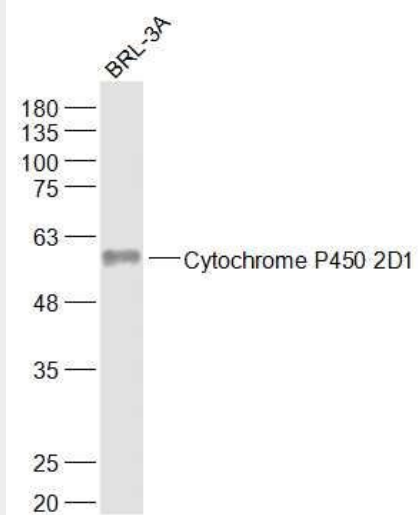
Endoplasmic reticulum membrane; Peripheral membrane protein. Microsome membrane; Peripheral membrane protein

Cytochrome P450 2D1 Polyclonal Antibody - Protocols

Provided below are standard protocols that you may find useful for product applications.

- [Western Blot](#)
- [Blocking Peptides](#)
- [Dot Blot](#)
- [Immunohistochemistry](#)
- [Immunofluorescence](#)
- [Immunoprecipitation](#)
- [Flow Cytometry](#)
- [Cell Culture](#)

Cytochrome P450 2D1 Polyclonal Antibody - Images



Sample:

BRL-3A(Rat) Cell Lysate at 30 ug

Primary: Anti-Cytochrome P450 2D1 (bs-23771R) at 1/1000 dilution

Secondary: IRDye800CW Goat Anti-Rabbit IgG at 1/20000 dilution

Predicted band size: 55 kD

Observed band size: 58 kD