

B4GALT6 Polyclonal Antibody
Purified Rabbit Polyclonal Antibody (Pab)
Catalog # AP58010**Specification**

B4GALT6 Polyclonal Antibody - Product Information

Application	IHC-P
Primary Accession	O9UBX8
Reactivity	Rat, Pig, Dog, Bovine
Host	Rabbit
Clonality	Polyclonal
Calculated MW	44914

B4GALT6 Polyclonal Antibody - Additional Information**Gene ID** 9331**Other Names**

Beta-1, 4-galactosyltransferase 6, Beta-1, 4-GalTase 6, Beta4Gal-T6, b4Gal-T6, 2.4.1.-, Glucosylceramide beta-1, 4-galactosyltransferase, 2.4.1.274, Lactosylceramide synthase, LacCer synthase, UDP-Gal:beta-GlcNAc beta-1, 4-galactosyltransferase 6, UDP-Gal:glucosylceramide beta-1, 4-galactosyltransferase, UDP-galactose:beta-N-acetylglucosamine beta-1, 4-galactosyltransferase 6, B4GALT6 (HGNC:929)

Format

0.01M TBS(pH7.4), 0.09% (W/V) sodium azide and 50% Glyce

Storage

Store at -20 °C for one year. Avoid repeated freeze/thaw cycles. When reconstituted in sterile pH 7.4 0.01M PBS or diluent of antibody the antibody is stable for at least two weeks at 2-4 °C.

B4GALT6 Polyclonal Antibody - Protein Information**Name** B4GALT6 ([HGNC:929](#))**Function**

Catalyzes the synthesis of lactosylceramide (LacCer) via the transfer of galactose from UDP-galactose to glucosylceramide (GlcCer) (PubMed:3099851, PubMed:1551920, PubMed:24498430). LacCer is the starting point in the biosynthesis of all gangliosides (membrane-bound glycosphingolipids) which play pivotal roles in the CNS including neuronal maturation and axonal and myelin formation (By similarity).

Cellular Location

Golgi apparatus, Golgi stack membrane {ECO:0000250|UniProtKB:P15291}; Single-pass type II membrane protein Note=Trans cisternae of Golgi stack. {ECO:0000250|UniProtKB:P15291}

Tissue Location

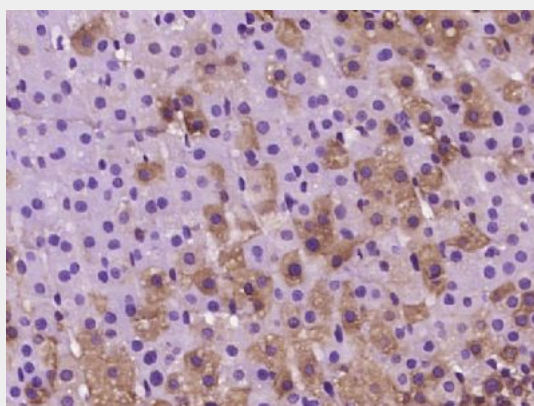
High expression in brain and adrenal gland, lower in liver, lung, colon and peripheral white blood cells

B4GALT6 Polyclonal Antibody - Protocols

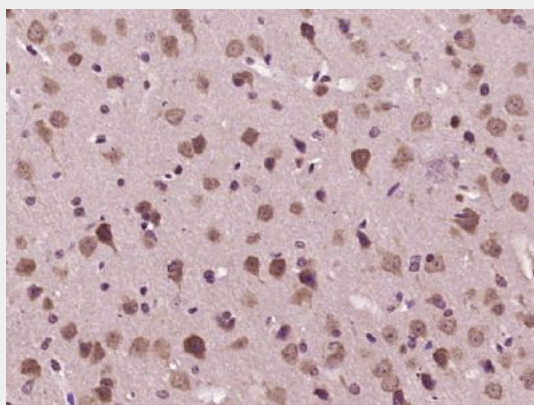
Provided below are standard protocols that you may find useful for product applications.

- [Western Blot](#)
- [Blocking Peptides](#)
- [Dot Blot](#)
- [Immunohistochemistry](#)
- [Immunofluorescence](#)
- [Immunoprecipitation](#)
- [Flow Cytometry](#)
- [Cell Culture](#)

B4GALT6 Polyclonal Antibody - Images



Paraformaldehyde-fixed, paraffin embedded (rat adrenal gland tissue); Antigen retrieval by boiling in sodium citrate buffer (pH6.0) for 15min; Block endogenous peroxidase by 3% hydrogen peroxide for 20 minutes; Blocking buffer (normal goat serum) at 37°C for 30min; Antibody incubation with (B4GALT6) Polyclonal Antibody, Unconjugated (bs-23824R) at 1:400 overnight at 4°C, followed by operating according to SP Kit(Rabbit) (sp-0023) instructions and DAB staining.



Paraformaldehyde-fixed, paraffin embedded (mouse brain tissue); Antigen retrieval by boiling in sodium citrate buffer (pH6.0) for 15min; Block endogenous peroxidase by 3% hydrogen peroxide for 20 minutes; Blocking buffer (normal goat serum) at 37°C for 30min; Antibody incubation with (B4GALT6) Polyclonal Antibody, Unconjugated (bs-23824R) at 1:400 overnight at 4°C, followed by operating according to SP Kit(Rabbit) (sp-0023) instructions and DAB staining.