

**APNG/MPG Polyclonal Antibody**  
**Purified Rabbit Polyclonal Antibody (Pab)**  
**Catalog # AP58019**

**Specification**

**APNG/MPG Polyclonal Antibody - Product Information**

Application	WB, IHC-P, IHC-F, IF, E
Primary Accession	<a href="#">P29372</a>
Reactivity	Rat, Pig, Bovine
Host	Rabbit
Clonality	Polyclonal
Calculated MW	33 KDa
Physical State	Liquid
Immunogen	KLH conjugated synthetic peptide derived from human APNG/MPG
Epitope Specificity	101-200/298
Isotype	IgG
<b>Purity</b>	
affinity purified by Protein A	
Buffer	0.01M TBS (pH7.4) with 1% BSA, 0.02% Proclin300 and 50% Glycerol.
SUBCELLULAR LOCATION	Nucleus.
SIMILARITY	Belongs to the DNA glycosylase MPG family.
SUBUNIT	Belongs to the DNA glycosylase MPG family.
Important Note	This product as supplied is intended for research use only, not for use in human, therapeutic or diagnostic applications.

**Background Descriptions**

MPG (N-methylpurine DNA glycosylase, or 3-methyladenine (3MeA) DNA glycosylase) repairs the 3MeA lethal lesion blocking DNA replication in Escherichia coli. Analysis of human cDNA libraries found a cDNA that would hybridize to human genomic DNA but not to E. coli or yeast DNA. This MPG gene has been mapped to human chromosome 16 by analysis of a panel of DNAs from mouse/human and hamster/human hybrid cell lines.

**APNG/MPG Polyclonal Antibody - Additional Information**

**Gene ID** 4350

**Other Names**

DNA-3-methyladenine glycosylase, 3.2.2.21, 3-alkyladenine DNA glycosylase, 3-methyladenine DNA glycosidase, ADPG, N-methylpurine-DNA glycosylase, MPG, AAG, ANPG, MID1

**Dilution**

<span class = "dilution\_WB">WB~~1:1000</span><br \><span class = "dilution\_IHC-P">IHC-P~~N/A</span><br \><span class = "dilution\_IHC-F">IHC-F~~N/A</span><br \><span class =

=dilution\_IF">IF~1:50~200</span><br \><span class = "dilution\_E">E~N/A</span>

**Format**

0.01M TBS(pH7.4), 0.09% (W/V) sodium azide and 50% Glyce

**Storage**

Store at -20 °C for one year. Avoid repeated freeze/thaw cycles. When reconstituted in sterile pH 7.4 0.01M PBS or diluent of antibody the antibody is stable for at least two weeks at 2-4 °C.

**APNG/MPG Polyclonal Antibody - Protein Information**

**Name** MPG

**Synonyms** AAG, ANPG, MID1

**Function**

Hydrolysis of the deoxyribose N-glycosidic bond to excise 3- methyladenine, and 7-methylguanine from the damaged DNA polymer formed by alkylation lesions.

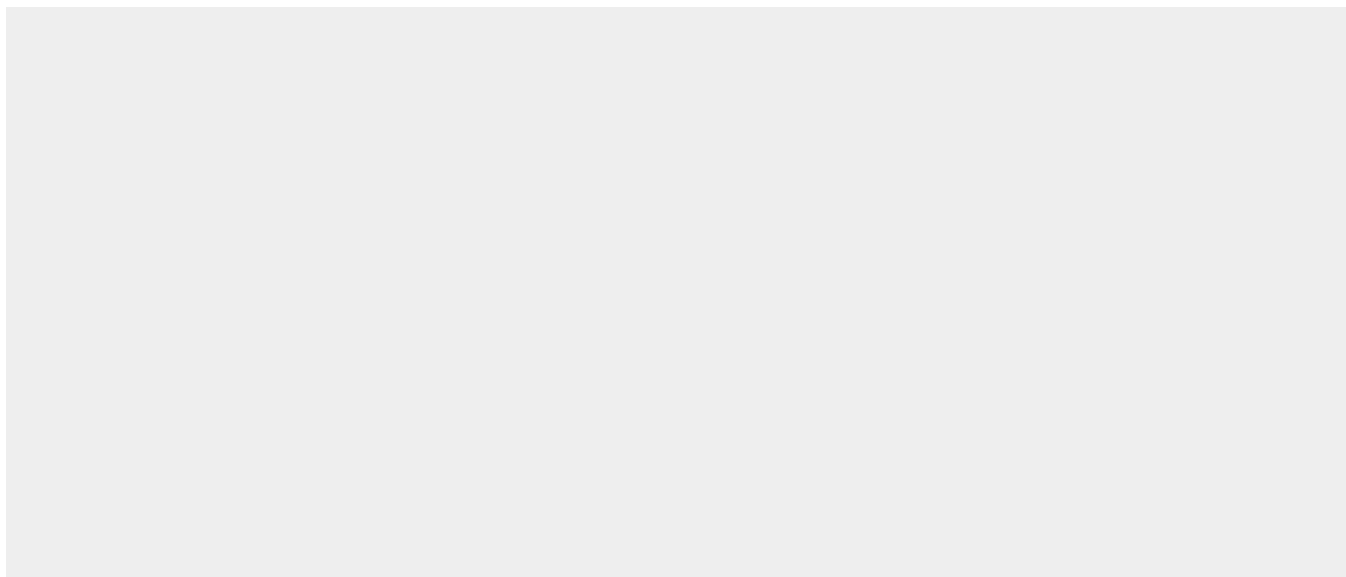
**Cellular Location**

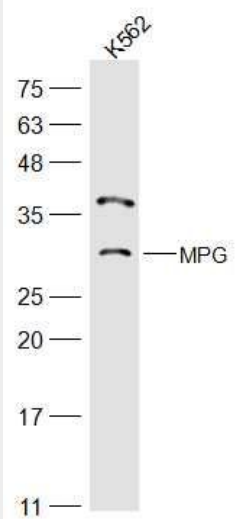
Cytoplasm. Mitochondrion matrix, mitochondrion nucleoid. Nucleus

**APNG/MPG Polyclonal Antibody - Protocols**

Provided below are standard protocols that you may find useful for product applications.

- [Western Blot](#)
- [Blocking Peptides](#)
- [Dot Blot](#)
- [Immunohistochemistry](#)
- [Immunofluorescence](#)
- [Immunoprecipitation](#)
- [Flow Cytometry](#)
- [Cell Culture](#)

**APNG/MPG Polyclonal Antibody - Images**



**Sample:**

K562(Human) Cell Lysate at 30 ug

Primary: Anti-MPG (bs-2412R) at 1/500 dilution

Secondary: IRDye800CW Goat Anti-Rabbit IgG at 1/20000 dilution

Predicted band size: 33 kD

Observed band size: 33 kD