

**BAFF Polyclonal Antibody**  
**Purified Rabbit Polyclonal Antibody (Pab)**  
**Catalog # AP58024****Specification**

---

**BAFF Polyclonal Antibody - Product Information**

Application	WB, IHC-P, IHC-F, IF, E
Primary Accession	<a href="#">O9WU72</a>
Reactivity	Rat, Pig, Bovine
Host	Rabbit
Clonality	Polyclonal
Calculated MW	34192

**BAFF Polyclonal Antibody - Additional Information****Gene ID** 24099**Other Names**

Tumor necrosis factor ligand superfamily member 13B, B-cell-activating factor, BAFF, CD257, Tumor necrosis factor ligand superfamily member 13b, membrane form, Tumor necrosis factor ligand superfamily member 13b, soluble form, Tnfsf13b, Baff

**Dilution**

<span class = "dilution\_WB">WB~1:1000</span><br \><span class = "dilution\_IHC-P">IHC-P~N/A</span><br \><span class = "dilution\_IHC-F">IHC-F~N/A</span><br \><span class = "dilution\_IF">IF~1:50~200</span><br \><span class = "dilution\_E">E~N/A</span>

**Format**

0.01M TBS(pH7.4), 0.09% (W/V) sodium azide and 50% Glyce

**Storage**

Store at -20 °C for one year. Avoid repeated freeze/thaw cycles. When reconstituted in sterile pH 7.4 0.01M PBS or diluent of antibody the antibody is stable for at least two weeks at 2-4 °C.

**BAFF Polyclonal Antibody - Protein Information****Name** Tnfsf13b**Synonyms** Baff**Function**

Cytokine that binds to TNFRSF13B/TACI and TNFRSF17/BCMA. TNFSF13/APRIL binds to the same 2 receptors. Together, they form a 2 ligands -2 receptors pathway involved in the stimulation of B- and T- cell function and the regulation of humoral immunity. A third B-cell specific BAFF-receptor (BAFFR/BR3) promotes the survival of mature B- cells and the B-cell response.

**Cellular Location**

Cell membrane; Single-pass type II membrane protein

#### **Tissue Location**

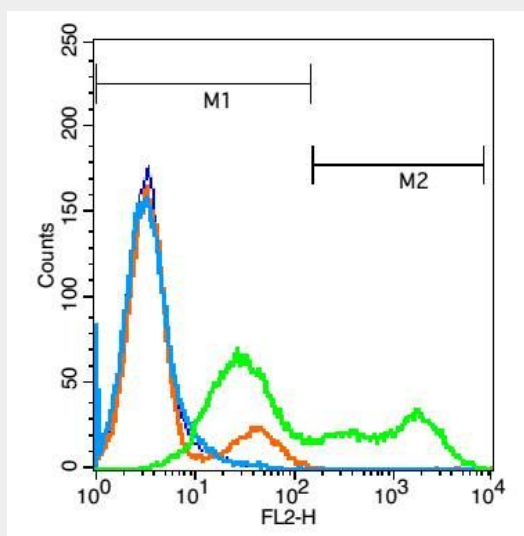
Isoform 2 is expressed in many myeloid cell lines.

#### **BAFF Polyclonal Antibody - Protocols**

Provided below are standard protocols that you may find useful for product applications.

- [Western Blot](#)
- [Blocking Peptides](#)
- [Dot Blot](#)
- [Immunohistochemistry](#)
- [Immunofluorescence](#)
- [Immunoprecipitation](#)
- [Flow Cytometry](#)
- [Cell Culture](#)

#### **BAFF Polyclonal Antibody - Images**



Blank control(blue). : Jurkat cells(fixed with 2% paraformaldehyde (10 min)).

Primary Antibody:Rabbit Anti-BAFF antibody(bs-2431R), Dilution: 3 µg in 100 µL 1X PBS containing 0.5% BSA;

Isotype Control Antibody: Rabbit IgG(orange) ,used under the same conditions );

Secondary Antibody: Goat anti-rabbit IgG-PE(white blue), Dilution: 1:200 in 1 X PBS containing 0.5% BSA.