

Macrophage Inflammatory Protein 1 gamma Polyclonal Antibody
Purified Rabbit Polyclonal Antibody (Pab)
Catalog # AP58027**Specification**

Macrophage Inflammatory Protein 1 gamma Polyclonal Antibody - Product Information

Application	IF, IHC-P
Primary Accession	P51670
Reactivity	Rat
Host	Rabbit
Clonality	Polyclonal
Calculated MW	13871

Macrophage Inflammatory Protein 1 gamma Polyclonal Antibody - Additional Information**Gene ID** 20308**Other Names**

C-C motif chemokine 9, CCF18, Macrophage inflammatory protein 1-gamma, MIP-1-gamma, Macrophage inflammatory protein-related protein 2, MRP-2, Small-inducible cytokine A9, CCL9(29-101), CCL9(30-101), CCL9(31-101), Ccl9, Mrp2, Scya10, Scya9

Format

0.01M TBS(pH7.4), 0.09% (W/V) sodium azide and 50% Glyce

Storage

Store at -20 °C for one year. Avoid repeated freeze/thaw cycles. When reconstituted in sterile pH 7.4 0.01M PBS or diluent of antibody the antibody is stable for at least two weeks at 2-4 °C.

Macrophage Inflammatory Protein 1 gamma Polyclonal Antibody - Protein Information**Name** Ccl9**Synonyms** Mrp2, Scya10, Scya9**Function**

Monokine with inflammatory, pyrogenic and chemokinetic properties. Circulates at high concentrations in the blood of healthy animals. Binding to a high-affinity receptor activates calcium release in neutrophils. It also inhibits colony formation of bone marrow myeloid immature progenitors.

Cellular Location

Secreted.

Tissue Location

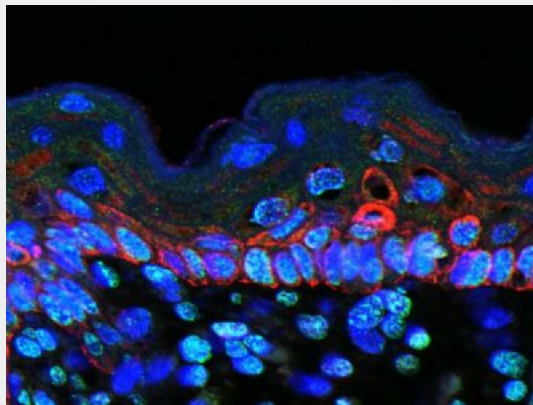
Expressed mainly in the liver, lung, and the thymus, although some expression has been detected in a wide variety of tissues except brain

Macrophage Inflammatory Protein 1 gamma Polyclonal Antibody - Protocols

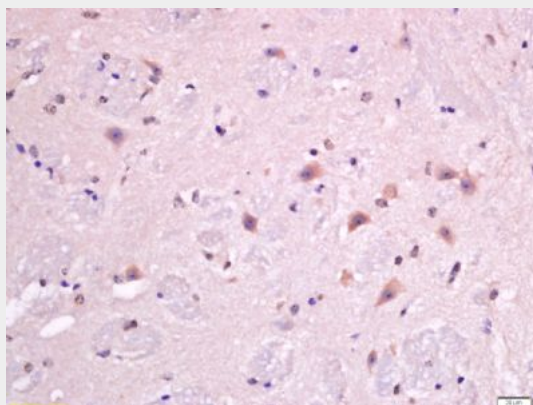
Provided below are standard protocols that you may find useful for product applications.

- [Western Blot](#)
- [Blocking Peptides](#)
- [Dot Blot](#)
- [Immunohistochemistry](#)
- [Immunofluorescence](#)
- [Immunoprecipitation](#)
- [Flow Cytometry](#)
- [Cell Culture](#)

Macrophage Inflammatory Protein 1 gamma Polyclonal Antibody - Images



Images kindly provided by Dr. Denny Cottle from the publication, Fetal inhibition of inflammation improves disease phenotypes in Harlequin Ichthyosis. Formalin-fixed and paraffin embedded mouse skin probed with Rabbit Anti- Macrophage Inflammatory Protein 1 gamma Polyclonal Antibody (bs-2477R) at 1:50 for two hours at room temperature (green channel). 5



Tissue/cell: mouse brain tissue; 4% Paraformaldehyde-fixed and paraffin-embedded;

Antigen retrieval: citrate buffer (0.01M, pH 6.0), Boiling bathing for 15min; Block endogenous peroxidase by 3% Hydrogen peroxide for 30min; Blocking buffer (normal goat serum,C-0005) at 37°C for 20 min;

Incubation: Anti- MIP-1 gamma Polyclonal Antibody, Unconjugated(bs-2477R) 1:500, overnight at 4°C, followed by conjugation to the secondary antibody(SP-0023) and DAB(C-0010) staining