

MIP3/CCL23 Polyclonal Antibody
Purified Rabbit Polyclonal Antibody (Pab)
Catalog # AP58029**Specification**

MIP3/CCL23 Polyclonal Antibody - Product Information

Application	IHC-P, IHC-F, IF, E
Primary Accession	P55773
Reactivity	Pig, Bovine
Host	Rabbit
Clonality	Polyclonal
Calculated MW	11 KDa
Physical State	Liquid
Immunogen	KLH conjugated synthetic peptide derived from human CCL23
Epitope Specificity	22-120/120
Isotype	IgG
Purity	
affinity purified by Protein A	
Buffer	0.01M TBS (pH7.4) with 1% BSA, 0.02% Proclin300 and 50% Glycerol.
SUBCELLULAR LOCATION	Secreted.
SIMILARITY	Belongs to the intercrine beta (chemokine CC) family.
Important Note	This product as supplied is intended for research use only, not for use in human, therapeutic or diagnostic applications.

Background Descriptions

This gene is one of several chemokine genes clustered on the q-arm of chromosome 17. Chemokines form a superfamily of secreted proteins involved in immunoregulatory and inflammatory processes. The superfamily is divided into four subfamilies based on the arrangement of the N-terminal cysteine residues of the mature peptide. This chemokine, a member of the CC subfamily, displays chemotactic activity on resting T lymphocytes and monocytes, lower activity on neutrophils and no activity on activated T lymphocytes. The protein is also a strong suppressor of colony formation by a multipotential hematopoietic progenitor cell line. In addition, the product of this gene is a potent agonist of the chemokine (C-C motif) receptor 1. Alternative splicing results in multiple transcript variants that encode different isoforms. [provided by RefSeq, Jul 2013]

MIP3/CCL23 Polyclonal Antibody - Additional Information**Gene ID 6368****Other Names**

C-C motif chemokine 23, CK-beta-8, CKB-8, Macrophage inflammatory protein 3, MIP-3, Myeloid progenitor inhibitory factor 1, MPIF-1, Small-inducible cytokine A23, CCL23(19-99), CCL23(22-99), CCL23(27-99), CCL23(30-99), CCL23, MIP3, MPIF1, SCYA23

Target/Specificity

High levels in adult lung, liver, skeletal muscle and pancreas. Moderate levels in fetal liver, adult bone marrow and placenta. The short form is the major species and the longer form was detected only in very low abundance. CCL23(19-99), CCL23(22-99), CCL23(27-99), CCL23(30-99) are found in high levels in synovial fluids from rheumatoid patients.

Dilution

IHC-P ~ N/A
IHC-F ~ N/A
IF ~ 1:50 ~ 200
E ~ N/A

Format

0.01M TBS(pH7.4), 0.09% (W/V) sodium azide and 50% Glycerol

Storage

Store at -20 °C for one year. Avoid repeated freeze/thaw cycles. When reconstituted in sterile pH 7.4 0.01M PBS or diluent of antibody the antibody is stable for at least two weeks at 2-4 °C.

MIP3/CCL23 Polyclonal Antibody - Protein Information

Name CCL23

Synonyms MIP3, MPIF1, SCYA23

Function

Shows chemotactic activity for monocytes, resting T- lymphocytes, and neutrophils, but not for activated lymphocytes. Inhibits proliferation of myeloid progenitor cells in colony formation assays. This protein can bind heparin. Binds CCR1. CCL23(19-99), CCL23(22-99), CCL23(27-99), CCL23(30-99) are more potent chemoattractants than CCL23.

Cellular Location

Secreted.

Tissue Location

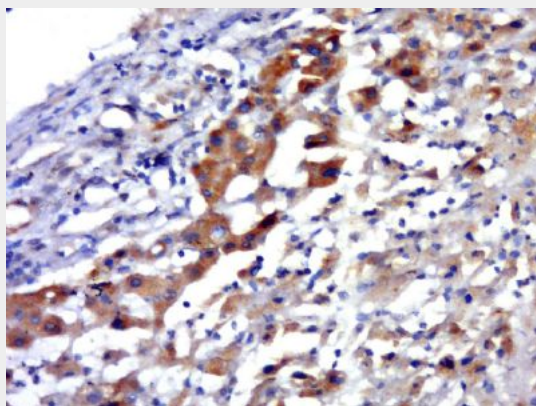
High levels in adult lung, liver, skeletal muscle and pancreas. Moderate levels in fetal liver, adult bone marrow and placenta. The short form is the major species and the longer form was detected only in very low abundance. CCL23(19-99), CCL23(22-99), CCL23(27-99), CCL23(30-99) are found in high levels in synovial fluids from rheumatoid patients.

MIP3/CCL23 Polyclonal Antibody - Protocols

Provided below are standard protocols that you may find useful for product applications.

- [Western Blot](#)
- [Blocking Peptides](#)
- [Dot Blot](#)
- [Immunohistochemistry](#)
- [Immunofluorescence](#)
- [Immunoprecipitation](#)
- [Flow Cytometry](#)
- [Cell Culture](#)

MIP3/CCL23 Polyclonal Antibody - Images



Paraformaldehyde-fixed, paraffin embedded (liver cancer); Antigen retrieval by boiling in sodium citrate buffer (pH6.0) for 15min; Block endogenous peroxidase by 3% hydrogen peroxide for 20 minutes; Blocking buffer (normal goat serum) at 37°C for 30min; Antibody incubation with (CCL23) Polyclonal Antibody, Unconjugated (bs-2482R) at 1:500 overnight at 4°C, followed by a conjugated secondary (sp-0023) for 20 minutes and DAB staining.