

CD35 Polyclonal Antibody
Purified Rabbit Polyclonal Antibody (Pab)
Catalog # AP58038**Specification**

CD35 Polyclonal Antibody - Product Information

Application	FC
Primary Accession	P17927
Host	Rabbit
Clonality	Polyclonal
Calculated MW	223663

CD35 Polyclonal Antibody - Additional Information**Gene ID** 1378**Other Names**

Complement receptor type 1, C3b/C4b receptor, CD35, CR1, C3BR

Format

0.01M TBS(pH7.4), 0.09% (W/V) sodium azide and 50% Glyce

Storage

Store at -20 °C for one year. Avoid repeated freeze/thaw cycles. When reconstituted in sterile pH 7.4 0.01M PBS or diluent of antibody the antibody is stable for at least two weeks at 2-4 °C.

CD35 Polyclonal Antibody - Protein Information**Name** CR1**Synonyms** C3BR**Function**

Membrane immune adherence receptor that plays a critical role in the capture and clearance of complement-opsonized pathogens by erythrocytes and monocytes/macrophages (PubMed:2963069). Mediates the binding by these cells of particles and immune complexes that have activated complement to eliminate them from the circulation (PubMed:2963069). Acts also in the inhibition of spontaneous complement activation by impairing the formation and function of the alternative and classical pathway C3/C5 convertases, and by serving as a cofactor for the cleavage by factor I of C3b to iC3b, C3c and C3d,g, and of C4b to C4c and C4d (PubMed:2972794, PubMed:8175757). Also plays a role in immune regulation by contributing, upon ligand binding, to the generation of regulatory T cells from activated helper T cells (PubMed:25742728).

Cellular Location

Membrane; Single- pass type I membrane protein

Tissue Location

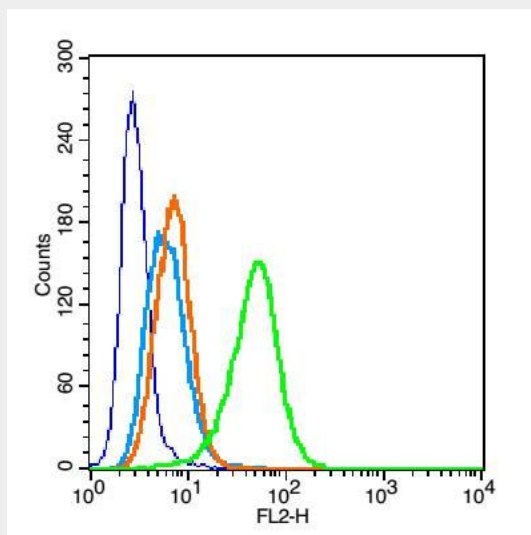
Present on erythrocytes, a subset of T cells, mature B cells, follicular dendritic cells, monocytes and granulocytes

CD35 Polyclonal Antibody - Protocols

Provided below are standard protocols that you may find useful for product applications.

- [Western Blot](#)
- [Blocking Peptides](#)
- [Dot Blot](#)
- [Immunohistochemistry](#)
- [Immunofluorescence](#)
- [Immunoprecipitation](#)
- [Flow Cytometry](#)
- [Cell Culture](#)

CD35 Polyclonal Antibody - Images



Blank control(blue): U937 (fixed with 2% paraformaldehyde (10 min)).

Primary Antibody: Rabbit Anti-Dopamine Transporter antibody(bs-2596R), Dilution: 0.2 µg in 100 µL 1X PBS containing 0.5% BSA;

Isotype Control Antibody: Rabbit IgG(orange) ,used under the same conditions);

Secondary Antibody: Goat anti-rabbit IgG-PE(white blue), Dilution: 1:200 in 1 X PBS containing 0.5% BSA.