

IL22BP Polyclonal Antibody
Purified Rabbit Polyclonal Antibody (Pab)
Catalog # AP58041**Specification**

IL22BP Polyclonal Antibody - Product Information

Application	WB, IHC-P, FC
Primary Accession	Q969J5
Reactivity	Rat
Host	Rabbit
Clonality	Polyclonal
Calculated MW	30550

IL22BP Polyclonal Antibody - Additional Information**Gene ID** 116379**Other Names**

Interleukin-22 receptor subunit alpha-2, IL-22 receptor subunit alpha-2, IL-22R-alpha-2, IL-22RA2, Cytokine receptor class-II member 10, Cytokine receptor family 2 member 10, CRF2-10, Cytokine receptor family type 2, soluble 1, CRF2-S1, Interleukin-22-binding protein, IL-22BP, IL22BP, ZcytoR16, IL22RA2

Format

0.01M TBS(pH7.4), 0.09% (W/V) sodium azide and 50% Glyce

Storage

Store at -20 °C for one year. Avoid repeated freeze/thaw cycles. When reconstituted in sterile pH 7.4 0.01M PBS or diluent of antibody the antibody is stable for at least two weeks at 2-4 °C.

IL22BP Polyclonal Antibody - Protein Information**Name** IL22RA2**Function**

Isoform 2 is a receptor for IL22. Binds to IL22, prevents interaction with the functional IL-22R complex and blocks the activity of IL22 (in vitro). May play an important role as an IL22 antagonist in the regulation of inflammatory responses.

Cellular Location

Secreted.

Tissue Location

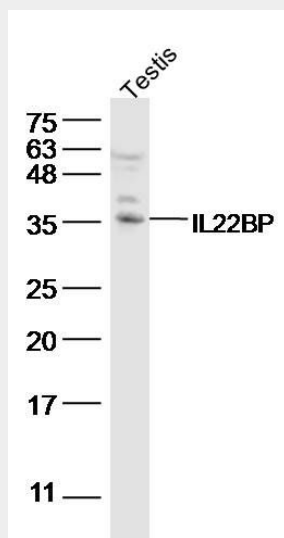
Expressed in placenta, spleen, breast, skin and lung. Also detected in intestinal tract, testis, brain, heart and thymus. No expression found in prostate, bladder, kidney, ovary, muscle, bone marrow, liver and uterus. Isoform 1 is expressed only in placenta. Isoform 2 is expressed in placenta and breast and at lower level in spleen, skin, thymus and stomach

IL22BP Polyclonal Antibody - Protocols

Provided below are standard protocols that you may find useful for product applications.

- [Western Blot](#)
- [Blocking Peptides](#)
- [Dot Blot](#)
- [Immunohistochemistry](#)
- [Immunofluorescence](#)
- [Immunoprecipitation](#)
- [Flow Cytometry](#)
- [Cell Culture](#)

IL22BP Polyclonal Antibody - Images



Sample:

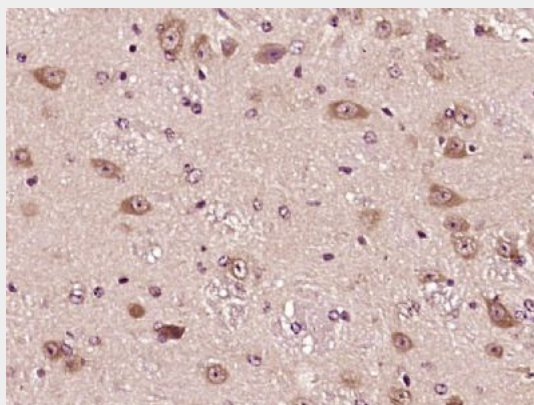
testis(rat) Lysate at 40 ug

Primary: Anti-IL22BP (bs-2625R) at 1/300 dilution

Secondary: IRDye800CW Goat Anti-Rabbit IgG at 1/20000 dilution

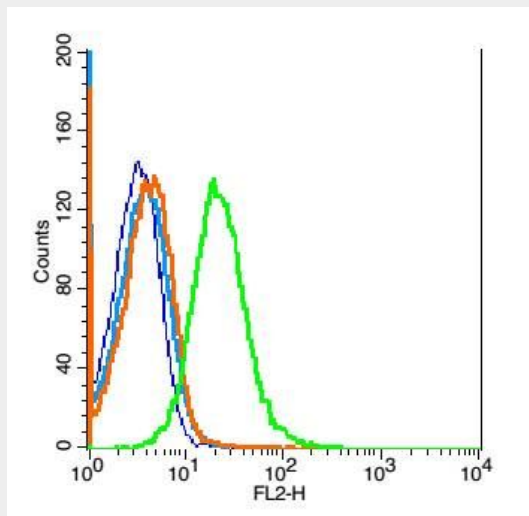
Predicted band size: 25/28kD

Observed band size: 35 kD



Paraformaldehyde-fixed, paraffin embedded (Mouse brain); Antigen retrieval by boiling in sodium

citrate buffer (pH6.0) for 15min; Block endogenous peroxidase by 3% hydrogen peroxide for 20 minutes; Blocking buffer (normal goat serum) at 37°C for 30min; Antibody incubation with (IL22BP) Polyclonal Antibody, Unconjugated (bs-2625R) at 1:400 overnight at 4°C, followed by operating according to SP Kit(Rabbit) (sp-0023) instructions and DAB staining.



Blank control: mouse spleen cells (blue), the cells were fixed with 2% paraformaldehyde (10 min) and then permeabilized with ice-cold 90% methanol for 30 min on ice.

Isotype Control Antibody: Rabbit IgG (orange) ; Secondary Antibody: Goat anti-rabbit IgG-PE (white blue), Dilution: 1:200 in 1 X PBS containing 0.5% BSA ; Primary Antibody Dilution: 1 µg in 100 µL 1X PBS containing 0.5% BSA (green).