

CLEC2D Polyclonal Antibody
Purified Rabbit Polyclonal Antibody (Pab)
Catalog # AP58048**Specification****CLEC2D Polyclonal Antibody - Product Information**

Application	IHC-P, IHC-F, IF, E
Primary Accession	Q9UHP7
Reactivity	Rat, Pig, Dog
Host	Rabbit
Clonality	Polyclonal
Calculated MW	10 KDa
Physical State	Liquid
Immunogen	KLH conjugated synthetic peptide derived from human CLEC2D
Epitope Specificity	101-207/207
Isotype	IgG
Purity affinity purified by Protein A	
Buffer	0.01M TBS (pH7.4) with 1% BSA, 0.02% Proclin300 and 50% Glycerol.
SUBCELLULAR LOCATION	Cell membrane; Single-pass type II membrane protein. Cell surface. Isoform 2, 4: Endoplasmic reticulum.
SIMILARITY	Contains 1 C-type lectin domain.
SUBUNIT	Homodimer or heterodimer; disulfide-linked.
Important Note	This product as supplied is intended for research use only, not for use in human, therapeutic or diagnostic applications.

Background Descriptions

This gene encodes a member of the natural killer cell receptor C-type lectin family. The encoded protein inhibits osteoclast formation and contains a transmembrane domain near the N-terminus as well as the C-type lectin-like extracellular domain. Several alternatively spliced transcript variants have been identified, but the full-length nature of every transcript has not been defined.

CLEC2D Polyclonal Antibody - Additional Information

Gene ID 29121

Other Names

C-type lectin domain family 2 member D, Lectin-like NK cell receptor, Lectin-like transcript 1, LLT-1, Osteoclast inhibitory lectin, CLEC2D, CLAX, LLT1, OCIL

Target/Specificity

Detected in fetal heart, brain, lung, chondrocytes, perichondrium and osteoblasts, and in adult splenocytes, thymocytes, lymph-node cells, osteoblasts, growth plate chondrocytes and skeletal muscle overlying the bone (at protein level). Ubiquitous. Detected in thymus, bone marrow, lung,

gut, heart, skeletal muscle, ovary, spleen, ileum, liver and kidney.

Dilution

IHC-P ~ N/A
IHC-F ~ N/A
IF ~ 1:50 ~ 200
E ~ N/A

Format

0.01M TBS(pH7.4), 0.09% (W/V) sodium azide and 50% Glyce

Storage

Store at -20 °C for one year. Avoid repeated freeze/thaw cycles. When reconstituted in sterile pH 7.4 0.01M PBS or diluent of antibody the antibody is stable for at least two weeks at 2-4 °C.

CLEC2D Polyclonal Antibody - Protein Information

Name CLEC2D

Synonyms CLAX, LLT1, OCIL

Function

Receptor for KLRB1 that protects target cells against natural killer cell-mediated lysis (PubMed: [16339513](http://www.uniprot.org/citations/16339513), PubMed: [20843815](http://www.uniprot.org/citations/20843815)). Inhibits osteoclast formation (PubMed: [14753741](http://www.uniprot.org/citations/14753741), PubMed: [15123656](http://www.uniprot.org/citations/15123656)). Inhibits bone resorption (PubMed: [14753741](http://www.uniprot.org/citations/14753741)). Modulates the release of interferon-gamma (PubMed: [15104121](http://www.uniprot.org/citations/15104121)). Binds high molecular weight sulfated glycosaminoglycans (PubMed: [15123656](http://www.uniprot.org/citations/15123656)).

Cellular Location

Cell membrane; Single-pass type II membrane protein [Isoform 4]: Endoplasmic reticulum

Tissue Location

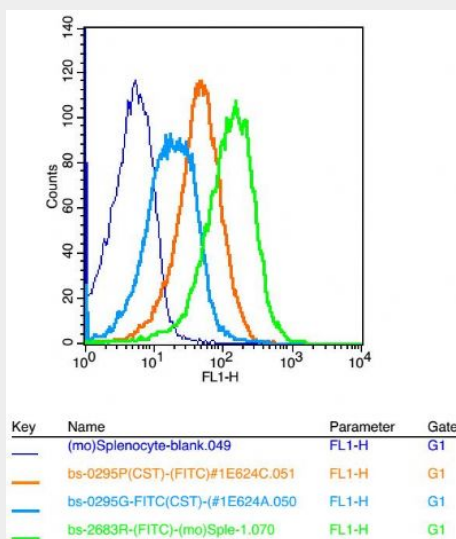
Detected in peripheral blood leukocytes, osteoblasts, lymph node, thymus and spleen. Isoform 1, isoform 2 and isoform 4 are expressed in T- and B-lymphocytes, and at lower levels in NK cells. They are also expressed in B-cell lines and LPS-matured monocyte-derived dendritic cells.

CLEC2D Polyclonal Antibody - Protocols

Provided below are standard protocols that you may find useful for product applications.

- [Western Blot](#)
- [Blocking Peptides](#)
- [Dot Blot](#)
- [Immunohistochemistry](#)
- [Immunofluorescence](#)
- [Immunoprecipitation](#)
- [Flow Cytometry](#)
- [Cell Culture](#)

CLEC2D Polyclonal Antibody - Images

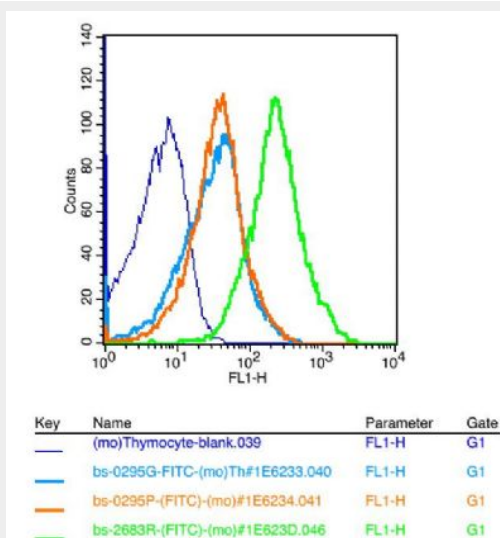


Positive control: (mo)Splenocytes(2% Paraformaldehyde-fixed)

Isotype Control Antibody: Rabbit IgG; Dilution: 1 µg in 100 µl 1 X PBS containing 0.5% BSA

Secondary Antibody: Goat anti-rabbit IgG-FITC; Dilution: 1:200 in 1 X PBS containing 0.5% BSA

Primary Antibody catalog number: bs-2683R; Dilution: 1 µg in 100 µl 1X PBS containing 0.5% BSA



Blank control: mouse thymocytes(blue)

Isotype Control Antibody: Rabbit IgG(orange) ; Secondary Antibody: Goat anti-rabbit IgG-FITC(white blue), Dilution: 1:100 in 1 X PBS containing 0.5% BSA ; Primary Antibody Dilution: 1 µl in 100 µl 1X PBS containing 0.5% BSA(green).