

TREML1 Polyclonal Antibody
Purified Rabbit Polyclonal Antibody (Pab)
Catalog # AP58053**Specification**

TREML1 Polyclonal Antibody - Product Information

Application	IHC-P, IHC-F, IF, E
Primary Accession	Q86YW5
Reactivity	Rat
Host	Rabbit
Clonality	Polyclonal
Calculated MW	33 KDa
Physical State	Liquid
Immunogen	KLH conjugated synthetic peptide derived from human TREML1
Epitope Specificity	201-311/311
Isotype	IgG
Purity	
affinity purified by Protein A	
Buffer	0.01M TBS (pH7.4) with 1% BSA, 0.02% Proclin300 and 50% Glycerol.
SUBCELLULAR LOCATION	Cell membrane; Single-pass type I membrane protein. Cytoplasm. Note=Sequestered in cytoplasmic vesicles in resting platelets. Transported to the cell surface after stimulation by thrombin. Soluble fragments can be released into the serum by proteolysis.
SIMILARITY	Contains 1 Ig-like V-type (immunoglobulin-like) domain.
SUBUNIT	When phosphorylated, interacts with PTPN6. When phosphorylated, interacts with PTPN11.
Important Note	This product as supplied is intended for research use only, not for use in human, therapeutic or diagnostic applications.

Background Descriptions

This gene encodes a member of the triggering receptor expressed on myeloid cells-like (TREM) family. The encoded protein is a type 1 single Ig domain orphan receptor localized to the alpha-granule membranes of platelets. The encoded protein is involved in platelet aggregation, inflammation, and cellular activation and has been linked to Gray platelet syndrome. Alternative splicing results in multiple transcript variants [provided by RefSeq, Nov 2012]

TREML1 Polyclonal Antibody - Additional Information**Gene ID** 340205**Other Names**

Trem-like transcript 1 protein, TLT-1, Triggering receptor expressed on myeloid cells-like protein 1, TREML1, TLT1

Target/Specificity

Detected in platelets, monocytic leukemia and in T-cell leukemia.

Dilution

IHC-P~~N/A
IHC-F~~N/A
IF~~1:50~200
E~~N/A

Storage

Store at -20 °C for one year. Avoid repeated freeze/thaw cycles. When reconstituted in sterile pH 7.4 0.01M PBS or diluent of antibody the antibody is stable for at least two weeks at 2-4 °C.

TREML1 Polyclonal Antibody - Protein Information

Name TREML1

Synonyms TLT1

Function

Cell surface receptor that may play a role in the innate and adaptive immune response.

Cellular Location

Cell membrane; Single-pass type I membrane protein Cytoplasm. Note=Sequestered in cytoplasmic vesicles in resting platelets (PubMed:15100151) Transported to the cell surface after stimulation by thrombin (PubMed:15100151). Soluble fragments can be released into the serum by proteolysis (PubMed:16505478)

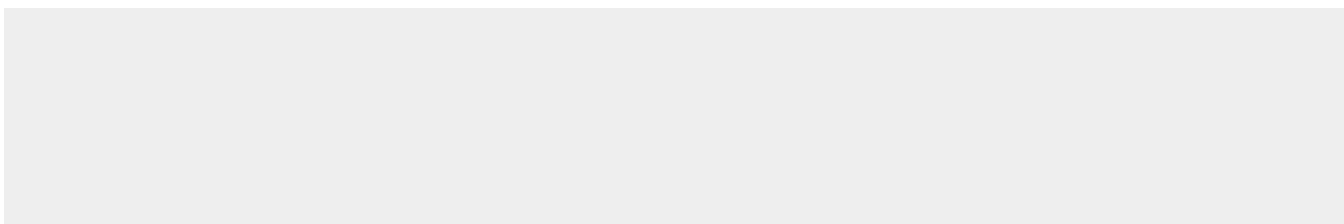
Tissue Location

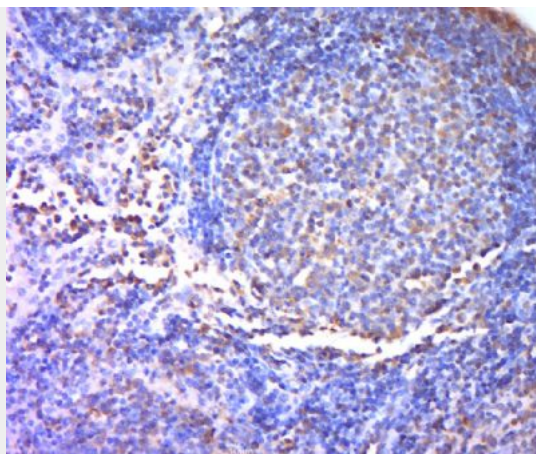
Detected in platelets, monocytic leukemia and in T- cell leukemia.

TREML1 Polyclonal Antibody - Protocols

Provided below are standard protocols that you may find useful for product applications.

- [Western Blot](#)
- [Blocking Peptides](#)
- [Dot Blot](#)
- [Immunohistochemistry](#)
- [Immunofluorescence](#)
- [Immunoprecipitation](#)
- [Flow Cytometry](#)
- [Cell Culture](#)

TREML1 Polyclonal Antibody - Images



Paraformaldehyde-fixed, paraffin embedded (mouse lymphoid); Antigen retrieval by boiling in sodium citrate buffer (pH6.0) for 15min; Block endogenous peroxidase by 3% hydrogen peroxide for 20 minutes; Blocking buffer (normal goat serum) at 37°C for 30min; Antibody incubation with (TREML1) Polyclonal Antibody, Unconjugated (bs-2724R) at 1:400 overnight at 4°C, followed by a conjugated secondary (sp-0023) for 20 minutes and DAB staining.