

ULBP1 Polyclonal Antibody
Purified Rabbit Polyclonal Antibody (Pab)
Catalog # AP58054

Specification

ULBP1 Polyclonal Antibody - Product Information

| | |
|-------------------|------------------------|
| Application | WB |
| Primary Accession | Q9BZM6 |
| Host | Rabbit |
| Clonality | Polyclonal |
| Calculated MW | 27997 |

ULBP1 Polyclonal Antibody - Additional Information

Gene ID 80329

Other Names

UL16-binding protein 1, ALCAN-beta, NKG2D ligand 1, N2DL-1, NKG2DL1, Retinoic acid early transcript 1I, ULBP1, N2DL1, RAET1I

Format

0.01M TBS(pH7.4), 0.09% (W/V) sodium azide and 50% Glyce

Storage

Store at -20 °C for one year. Avoid repeated freeze/thaw cycles. When reconstituted in sterile pH 7.4 0.01M PBS or diluent of antibody the antibody is stable for at least two weeks at 2-4 °C.

ULBP1 Polyclonal Antibody - Protein Information

Name ULBP1

Synonyms N2DL1, RAET1I

Function

Binds and activates the KLRK1/NKG2D receptor, mediating natural killer cell cytotoxicity.

Cellular Location

Cell membrane; Lipid-anchor, GPI-anchor. Endoplasmic reticulum. Note=In CMV-infected fibroblasts, detected in the endoplasmic reticulum/cis-Golgi

Tissue Location

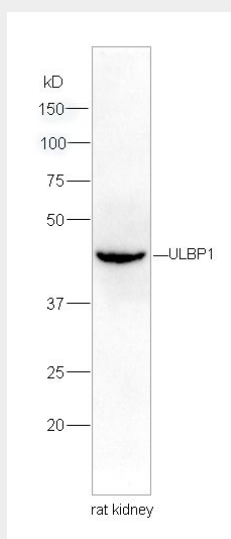
Expressed in T-cells, B-cells, erythroleukemia cell lines and in a wide range of tissues including heart, brain, lung, liver, testis, lymph node, thymus, tonsil and bone marrow. Also found in fetal heart, brain, lung and liver

ULBP1 Polyclonal Antibody - Protocols

Provided below are standard protocols that you may find useful for product applications.

- [Western Blot](#)
- [Blocking Peptides](#)
- [Dot Blot](#)
- [Immunohistochemistry](#)
- [Immunofluorescence](#)
- [Immunoprecipitation](#)
- [Flow Cytometry](#)
- [Cell Culture](#)

ULBP1 Polyclonal Antibody - Images



Protein: rat kidney lysates, 30ug;
Primary: Anti-ULBP1 (bs-2728R) at 1:200;
Secondary: HRP conjugated Goat Anti-Rabbit IgG(bs-0295G-HRP) at 1: 5000;
ECL excited the fluorescence;
Predicted band size : 25kD
Observed band size : 43kD