

C3a Receptor Polyclonal Antibody
Purified Rabbit Polyclonal Antibody (Pab)
Catalog # AP58066**Specification**

C3a Receptor Polyclonal Antibody - Product Information

Application	WB, IHC-P, IHC-F, IF, E
Primary Accession	Q16581
Reactivity	Rat
Host	Rabbit
Clonality	Polyclonal
Calculated MW	53864

C3a Receptor Polyclonal Antibody - Additional Information**Gene ID** 719**Other Names**

C3a anaphylatoxin chemotactic receptor, C3AR, C3a-R, C3AR1, AZ3B, C3R1, HNFAG09

Dilution

WB~~1:1000<br \>IHC-P~~N/A<br \>IHC-F~~N/A<br \>IF~~1:50~200<br \>E~~N/A

Format

0.01M TBS(pH7.4), 0.09% (W/V) sodium azide and 50% Glyce

Storage

Store at -20 °C for one year. Avoid repeated freeze/thaw cycles. When reconstituted in sterile pH 7.4 0.01M PBS or diluent of antibody the antibody is stable for at least two weeks at 2-4 °C.

C3a Receptor Polyclonal Antibody - Protein Information**Name** C3AR1**Synonyms** AZ3B, C3R1, HNFAG09**Function**

Receptor for the chemotactic and inflammatory peptide anaphylatoxin C3a. This receptor stimulates chemotaxis, granule enzyme release and superoxide anion production.

Cellular Location

Cell membrane; Multi-pass membrane protein.

Tissue Location

Widely expressed in several differentiated hematopoietic cell lines, in the lung, spleen, ovary,

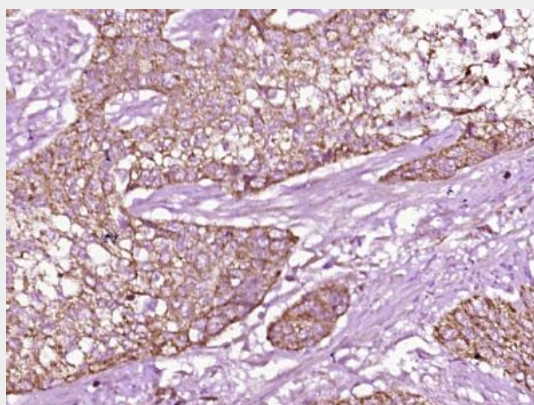
placenta, small intestine, throughout the brain, heart, and endothelial cells. Mostly expressed in lymphoid tissues

C3a Receptor Polyclonal Antibody - Protocols

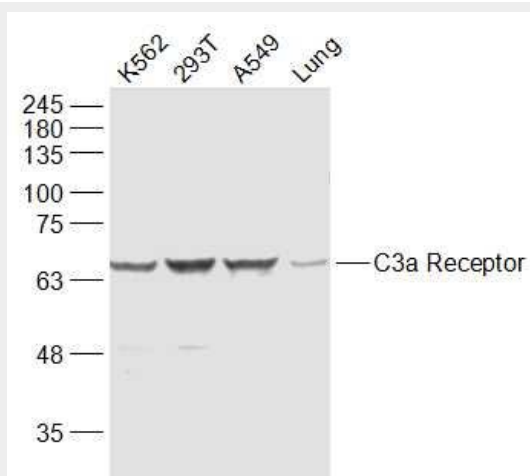
Provided below are standard protocols that you may find useful for product applications.

- [Western Blot](#)
- [Blocking Peptides](#)
- [Dot Blot](#)
- [Immunohistochemistry](#)
- [Immunofluorescence](#)
- [Immunoprecipitation](#)
- [Flow Cytometry](#)
- [Cell Culture](#)

C3a Receptor Polyclonal Antibody - Images

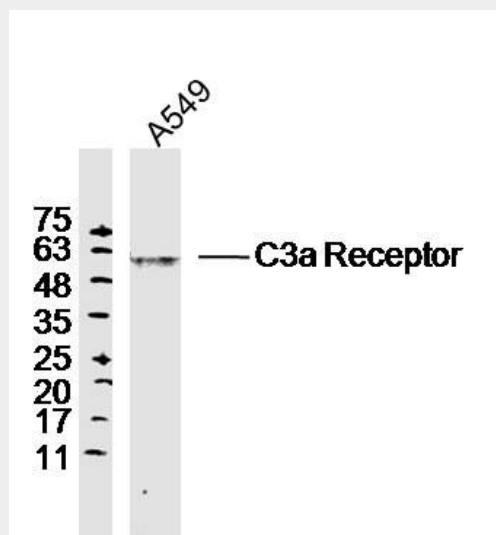


Paraformaldehyde-fixed, paraffin embedded (human gastric carcinoma); Antigen retrieval by boiling in sodium citrate buffer (pH6.0) for 15min; Block endogenous peroxidase by 3% hydrogen peroxide for 20 minutes; Blocking buffer (normal goat serum) at 37°C for 30min; Antibody incubation with (C3a Receptor) Polyclonal Antibody, Unconjugated (bs-2955R) at 1:400 overnight at 4°C, followed by operating according to SP Kit(Rabbit) (sp-0023) instructions and DAB staining.

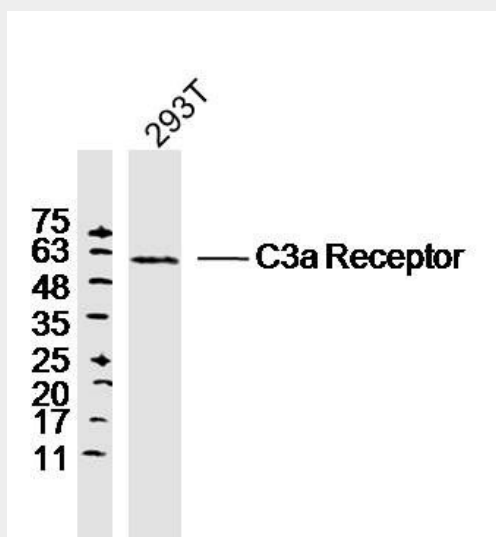


Sample:
K562(Human) Cell Lysate at 30 ug

293T(Human) Cell Lysate at 30 ug
A549(Human) Cell Lysate at 30 ug
Lung (Mouse) Lysate at 40 ug
Primary: Anti-C3a Receptor (bs-2955R) at 1/1000 dilution
Secondary: IRDye800CW Goat Anti-Rabbit IgG at 1/20000 dilution
Predicted band size: 54 kD
Observed band size: 64 kD



Sample: A549 Cell (Human) Lysate at 30 ug
Primary: Anti-C3a Receptor (bs-2955R) at 1/300 dilution
Secondary: IRDye800CW Goat Anti-Rabbit IgG at 1/20000 dilution
Predicted band size: 54kD
Observed band size: 60kD



Sample: 293T Cell (Human) Lysate at 30 ug
Primary: Anti-C3a Receptor (bs-2955R) at 1/300 dilution
Secondary: IRDye800CW Goat Anti-Rabbit IgG at 1/20000 dilution
Predicted band size: 54kD
Observed band size: 60kD