

**BORCS5 Antibody (C-term)**  
**Affinity Purified Rabbit Polyclonal Antibody (Pab)**  
**Catalog # AP5806B****Specification**

---

**BORCS5 Antibody (C-term) - Product Information**

Application	WB, IHC-P, FC,E
Primary Accession	<a href="#">O969J3</a>
Other Accession	<a href="#">NP_477517.1</a>
Reactivity	Human
Host	Rabbit
Clonality	Polyclonal
Isotype	Rabbit IgG
Antigen Region	167-196

**BORCS5 Antibody (C-term) - Additional Information****Gene ID** 118426**Other Names**

Loss of heterozygosity 12 chromosomal region 1 protein, LOH12CR1

**Target/Specificity**

This LOH12CR1 antibody is generated from rabbits immunized with a KLH conjugated synthetic peptide between 167-196 amino acids from the C-terminal region of human LOH12CR1.

**Dilution**

WB~~1:1000

IHC-P~~1:50~100

FC~~1:10~50

E~~Use at an assay dependent concentration.

**Format**

Purified polyclonal antibody supplied in PBS with 0.09% (W/V) sodium azide. This antibody is purified through a protein A column, followed by peptide affinity purification.

**Storage**

Maintain refrigerated at 2-8°C for up to 2 weeks. For long term storage store at -20°C in small aliquots to prevent freeze-thaw cycles.

**Precautions**

BORCS5 Antibody (C-term) is for research use only and not for use in diagnostic or therapeutic procedures.

**BORCS5 Antibody (C-term) - Protein Information****Name** BORCS5 ([HGNC:17950](#))

**Function** As part of the BORC complex may play a role in lysosomes movement and localization at the cell periphery. Associated with the cytosolic face of lysosomes, the BORC complex may recruit ARL8B and couple lysosomes to microtubule plus-end-directed kinesin motor. Thereby, it may indirectly play a role in cell spreading and motility.

**Cellular Location**

Lysosome membrane; Lipid-anchor; Cytoplasmic side

**Tissue Location**

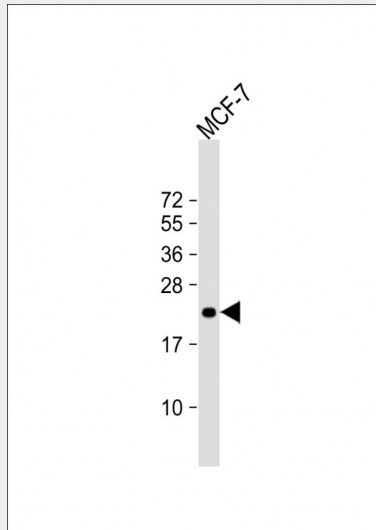
Ubiquitously expressed (at protein level).

**BORCS5 Antibody (C-term) - Protocols**

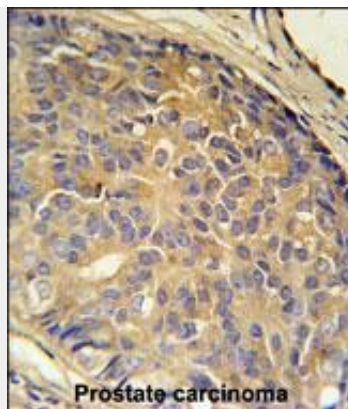
Provided below are standard protocols that you may find useful for product applications.

- [Western Blot](#)
- [Blocking Peptides](#)
- [Dot Blot](#)
- [Immunohistochemistry](#)
- [Immunofluorescence](#)
- [Immunoprecipitation](#)
- [Flow Cytometry](#)
- [Cell Culture](#)

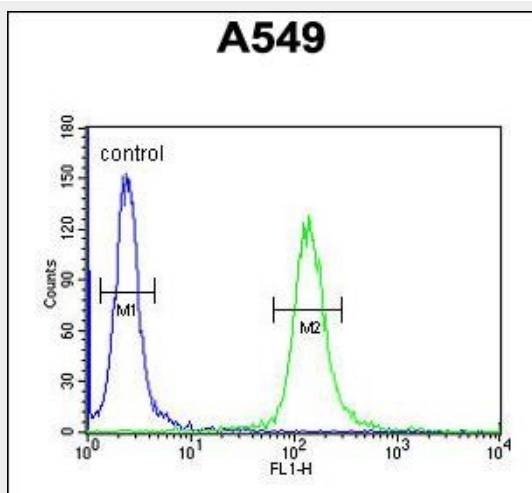
**BORCS5 Antibody (C-term) - Images**



Anti-LOH12CR1 Antibody (C-term) at 1:1000 dilution + MCF-7 whole cell lysate Lysates/proteins at 20 µg per lane. Secondary Goat Anti-Rabbit IgG, (H+L), Peroxidase conjugated at 1/10000 dilution. Predicted band size : 22 kDa Blocking/Dilution buffer: 5% NFDM/TBST.



LOH12CR1 Antibody (C-term) (Cat. #AP5806b) immunohistochemistry analysis in formalin fixed and paraffin embedded human prostate carcinoma followed by peroxidase conjugation of the secondary antibody and DAB staining. This data demonstrates the use of the LOH12CR1 Antibody (C-term) for immunohistochemistry. Clinical relevance has not been evaluated.



LOH12CR1 Antibody (C-term) (Cat. #AP5806b) flow cytometric analysis of A549 cells (right histogram) compared to a negative control cell (left histogram). FITC-conjugated goat-anti-rabbit secondary antibodies were used for the analysis.

#### **BORCS5 Antibody (C-term) - References**

Montpetit, A., et al. Leukemia 18(9):1499-1504(2004)  
Montpetit, A., et al. Eur. J. Hum. Genet. 10(1):62-71(2002)