

LOH12CR1 Antibody (C-term)
Affinity Purified Rabbit Polyclonal Antibody (Pab)
Catalog # AP5806B**Specification**

LOH12CR1 Antibody (C-term) - Product Information

Application	WB, IHC-P, FC,E
Primary Accession	O969J3
Other Accession	NP_477517.1
Reactivity	Human
Host	Rabbit
Clonality	Polyclonal
Isotype	Rabbit IgG
Calculated MW	22222
Antigen Region	167-196

LOH12CR1 Antibody (C-term) - Additional Information**Gene ID** 118426**Other Names**

Loss of heterozygosity 12 chromosomal region 1 protein, LOH12CR1

Target/Specificity

This LOH12CR1 antibody is generated from rabbits immunized with a KLH conjugated synthetic peptide between 167-196 amino acids from the C-terminal region of human LOH12CR1.

Dilution

WB~~1:1000
IHC-P~~1:50~100
FC~~1:10~50

Format

Purified polyclonal antibody supplied in PBS with 0.09% (W/V) sodium azide. This antibody is purified through a protein A column, followed by peptide affinity purification.

Storage

Maintain refrigerated at 2-8°C for up to 2 weeks. For long term storage store at -20°C in small aliquots to prevent freeze-thaw cycles.

Precautions

LOH12CR1 Antibody (C-term) is for research use only and not for use in diagnostic or therapeutic procedures.

LOH12CR1 Antibody (C-term) - Protein Information**Name** BORCS5 ([HGNC:17950](#))

Function As part of the BORC complex may play a role in lysosomes movement and localization at the cell periphery. Associated with the cytosolic face of lysosomes, the BORC complex may recruit ARL8B and couple lysosomes to microtubule plus-end-directed kinesin motor. Thereby, it may indirectly play a role in cell spreading and motility.

Cellular Location

Lysosome membrane; Lipid-anchor; Cytoplasmic side

Tissue Location

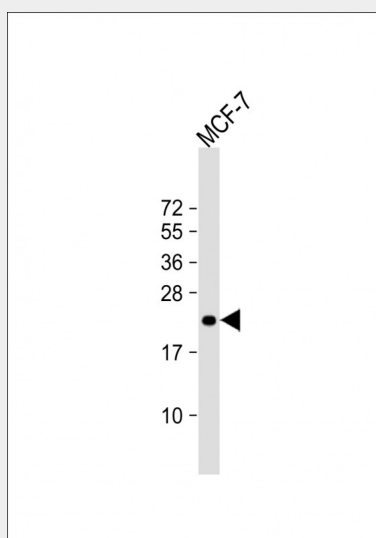
Ubiquitously expressed (at protein level).

LOH12CR1 Antibody (C-term) - Protocols

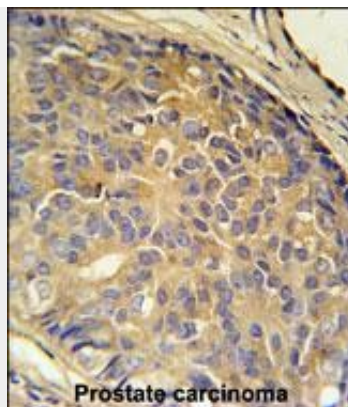
Provided below are standard protocols that you may find useful for product applications.

- [Western Blot](#)
- [Blocking Peptides](#)
- [Dot Blot](#)
- [Immunohistochemistry](#)
- [Immunofluorescence](#)
- [Immunoprecipitation](#)
- [Flow Cytometry](#)
- [Cell Culture](#)

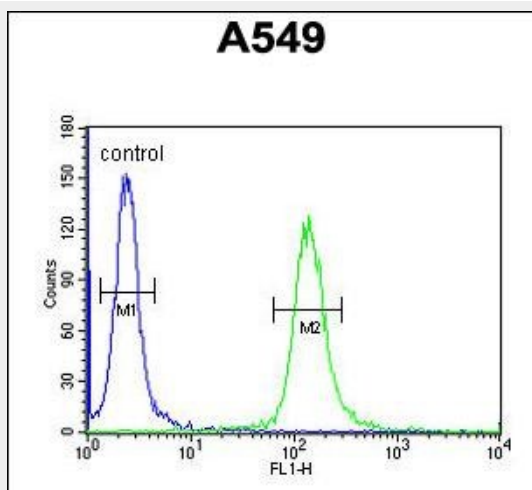
LOH12CR1 Antibody (C-term) - Images



Anti-LOH12CR1 Antibody (C-term) at 1:1000 dilution + MCF-7 whole cell lysate Lysates/proteins at 20 µg per lane. Secondary Goat Anti-Rabbit IgG, (H+L), Peroxidase conjugated at 1/10000 dilution. Predicted band size : 22 kDa Blocking/Dilution buffer: 5% NFDM/TBST.



LOH12CR1 Antibody (C-term) (Cat. #AP5806b) immunohistochemistry analysis in formalin fixed and paraffin embedded human prostate carcinoma followed by peroxidase conjugation of the secondary antibody and DAB staining. This data demonstrates the use of the LOH12CR1 Antibody (C-term) for immunohistochemistry. Clinical relevance has not been evaluated.



LOH12CR1 Antibody (C-term) (Cat. #AP5806b) flow cytometric analysis of A549 cells (right histogram) compared to a negative control cell (left histogram). FITC-conjugated goat-anti-rabbit secondary antibodies were used for the analysis.

LOH12CR1 Antibody (C-term) - References

- Montpetit, A., et al. Leukemia 18(9):1499-1504(2004)
Montpetit, A., et al. Eur. J. Hum. Genet. 10(1):62-71(2002)