

**NIPP1 Polyclonal Antibody**  
**Purified Rabbit Polyclonal Antibody (Pab)**  
**Catalog # AP58086****Specification**

---

**NIPP1 Polyclonal Antibody - Product Information**

Application	WB
Primary Accession	<a href="#">Q12972</a>
Reactivity	Rat, Pig, Bovine
Host	Rabbit
Clonality	Polyclonal
Calculated MW	38479

**NIPP1 Polyclonal Antibody - Additional Information****Gene ID** 5511**Other Names**

Nuclear inhibitor of protein phosphatase 1, NIPP-1, Protein phosphatase 1 regulatory inhibitor subunit 8, Activator of RNA decay, 3.1.4.-, ARD-1, PPP1R8, ARD1, NIPP1

**Format**

0.01M TBS(pH7.4), 0.09% (W/V) sodium azide and 50% Glyce

**Storage**

Store at -20 °C for one year. Avoid repeated freeze/thaw cycles. When reconstituted in sterile pH 7.4 0.01M PBS or diluent of antibody the antibody is stable for at least two weeks at 2-4 °C.

**NIPP1 Polyclonal Antibody - Protein Information****Name** PPP1R8**Synonyms** ARD1, NIPP1**Function**

Inhibitor subunit of the major nuclear protein phosphatase-1 (PP-1). It has RNA-binding activity but does not cleave RNA and may target PP-1 to RNA-associated substrates. May also be involved in pre- mRNA splicing. Binds DNA and might act as a transcriptional repressor. Seems to be required for cell proliferation.

**Cellular Location**

Nucleus. Nucleus speckle. Note=Primarily, but not exclusively, nuclear

**Tissue Location**

Ubiquitously expressed, with highest levels in heart and skeletal muscle, followed by brain, placenta, lung, liver and pancreas. Less abundant in kidney. The concentration and ratio between isoforms is cell-type dependent. Isoform Alpha (>90%) and isoform Beta were found in brain, heart and kidney. Isoform Gamma is mainly found in B-cells and T-lymphocytes, and has been found in

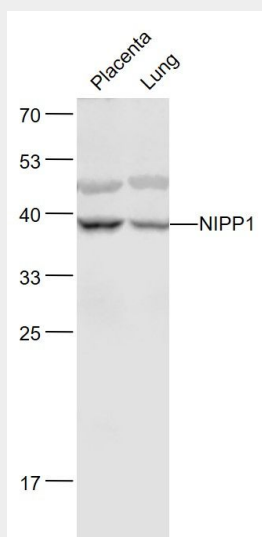
293 embryonic kidney cells.

### **NIPP1 Polyclonal Antibody - Protocols**

Provided below are standard protocols that you may find useful for product applications.

- [Western Blot](#)
- [Blocking Peptides](#)
- [Dot Blot](#)
- [Immunohistochemistry](#)
- [Immunofluorescence](#)
- [Immunoprecipitation](#)
- [Flow Cytometry](#)
- [Cell Culture](#)

### **NIPP1 Polyclonal Antibody - Images**



**Sample:**

Placenta (Mouse) Lysate at 40 ug

Lung (Mouse) Lysate at 40 ug

Primary: Anti- NIPP1 (bs-3658R) at 1/1000 dilution

Secondary: IRDye800CW Goat Anti-Rabbit IgG at 1/20000 dilution

Predicted band size: 38 kD

Observed band size: 38 kD