

SLC44A1 Polyclonal Antibody
Purified Rabbit Polyclonal Antibody (Pab)
Catalog # AP58088**Specification****SLC44A1 Polyclonal Antibody - Product Information**

Application	WB, IHC-P, IHC-F, IF, E
Primary Accession	Q8WWI5
Reactivity	Rat, Pig, Dog, Bovine
Host	Rabbit
Clonality	Polyclonal
Calculated MW	73 KDa
Physical State	Liquid
Immunogen	KLH conjugated synthetic peptide derived from human SLC44A1/CD92
Epitope Specificity	81-180/657
Isotype	IgG
Purity	
affinity purified by Protein A	
Buffer	0.01M TBS (pH7.4) with 1% BSA, 0.02% Proclin300 and 50% Glycerol.
SUBCELLULAR LOCATION	Cell membrane; Multi-pass membrane protein. Mitochondrion outer membrane; Multi-pass membrane protein.
SIMILARITY	Belongs to the CTL (choline transporter-like) family.
Important Note	This product as supplied is intended for research use only, not for use in human, therapeutic or diagnostic applications.

Background Descriptions

SLC44A1 (Solute carrier family 44, member 1) is an intermediate-affinity, Na⁺-independent choline transporter. It is thought to be important for the production of the membrane lipid phosphatidylcholine. Hence, it may have a role in membrane synthesis and myelin production.

SLC44A1 Polyclonal Antibody - Additional Information**Gene ID** 23446**Other Names**

Choline transporter-like protein 1, CDw92, Solute carrier family 44 member 1, CD92, SLC44A1, CD92, CDW92, CTL1

Target/Specificity

Expressed in various cells of the hematopoietic system.

Dilution

WB~~1:1000<br \>IHC-P~~N/A<br \><span class

=["dilution_IHC-F">IHC-F~N/A](#)<br \><span class
=["dilution_IF">IF~1:50~200](#)<br \>E~N/A](#)

Format

0.01M TBS(pH7.4), 0.09% (W/V) sodium azide and 50% Glyce

Storage

Store at -20 °C for one year. Avoid repeated freeze/thaw cycles. When reconstituted in sterile pH 7.4 0.01M PBS or diluent of antibody the antibody is stable for at least two weeks at 2-4 °C.

SLC44A1 Polyclonal Antibody - Protein Information

Name SLC44A1 ([HGNC:18798](#))

Synonyms CD92, CDW92, CTL1

Function

Choline/H⁺ antiporter (PubMed:[19357133](http://www.uniprot.org/citations/19357133), PubMed:[23651124](http://www.uniprot.org/citations/23651124), PubMed:[31855247](http://www.uniprot.org/citations/31855247), PubMed:[33789160](http://www.uniprot.org/citations/33789160)). Also acts as a high-affinity ethanolamine/H⁺ antiporter, regulating the supply of extracellular ethanolamine (Etn) for the CDP-Etn pathway, redistribute intracellular Etn and balance the CDP-Cho and CDP-Etn arms of the Kennedy pathway (PubMed:[33789160](http://www.uniprot.org/citations/33789160)). Involved in membrane synthesis and myelin production (PubMed:[31855247](http://www.uniprot.org/citations/31855247)).

Cellular Location

Cell membrane; Multi-pass membrane protein. Mitochondrion outer membrane; Multi-pass membrane protein

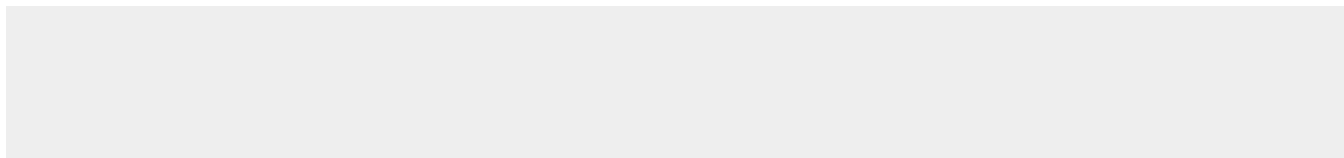
Tissue Location

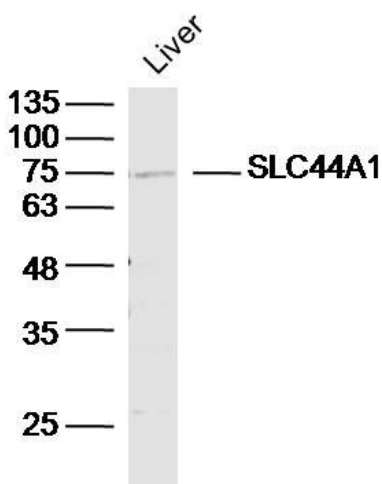
Expressed in various cells of the hematopoietic system.

SLC44A1 Polyclonal Antibody - Protocols

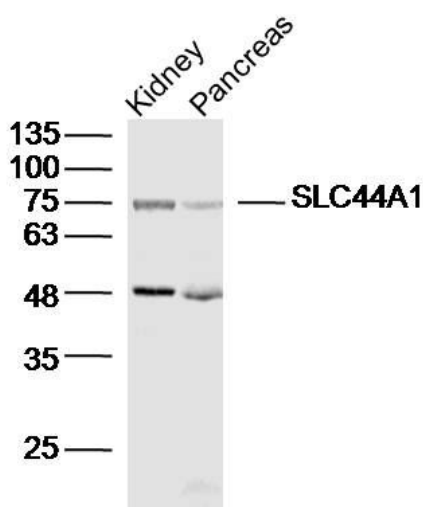
Provided below are standard protocols that you may find useful for product applications.

- [Western Blot](#)
- [Blocking Peptides](#)
- [Dot Blot](#)
- [Immunohistochemistry](#)
- [Immunofluorescence](#)
- [Immunoprecipitation](#)
- [Flow Cytometry](#)
- [Cell Culture](#)

SLC44A1 Polyclonal Antibody - Images



Sample: Liver (Mouse) Lysate at 40 ug
Primary: Anti-SLC44A1(bs-3667R) at 1/300 dilution
Secondary: IRDye800CW Goat Anti-Rabbit IgG at 1/20000 dilution
Predicted band size: 73kD
Observed band size: 75kD



Sample:
Kidney (Mouse) Lysate at 40 ug
Pancreas (Mouse) Lysate at 40 ug
Primary: Anti-SLC44A1(bs-3667R) at 1/300 dilution
Secondary: IRDye800CW Goat Anti-Rabbit IgG at 1/20000 dilution
Predicted band size: 73kD
Observed band size: 75kD