

**OLFML2A Antibody (N-term)**  
**Affinity Purified Rabbit Polyclonal Antibody (Pab)**  
**Catalog # AP5808a**

**Specification**

---

**OLFML2A Antibody (N-term) - Product Information**

Application	WB, IHC-P,E
Primary Accession	<a href="#">Q68BL7</a>
Other Accession	<a href="#">NP_872293.2</a>
Reactivity	Human
Host	Rabbit
Clonality	Polyclonal
Isotype	Rabbit IgG
Antigen Region	6-34

**OLFML2A Antibody (N-term) - Additional Information**

**Gene ID** 169611

**Other Names**

Olfactomedin-like protein 2A, Photomedin-1, OLFML2A

**Target/Specificity**

This OLFML2A antibody is generated from rabbits immunized with a KLH conjugated synthetic peptide between 6-34 amino acids from the N-terminal region of human OLFML2A.

**Dilution**

WB~~1:1000  
IHC-P~~1:50~100

**Format**

Purified polyclonal antibody supplied in PBS with 0.09% (W/V) sodium azide. This antibody is purified through a protein A column, followed by peptide affinity purification.

**Storage**

Maintain refrigerated at 2-8°C for up to 2 weeks. For long term storage store at -20°C in small aliquots to prevent freeze-thaw cycles.

**Precautions**

OLFML2A Antibody (N-term) is for research use only and not for use in diagnostic or therapeutic procedures.

**OLFML2A Antibody (N-term) - Protein Information**

**Name** OLFML2A

**Cellular Location**

Secreted {ECO:0000250|UniProtKB:Q8BHP7}. Note=Localizes to the podocyte major processes.

Colocalized with the major process protein VIM throughout podocyte development

#### **Tissue Location**

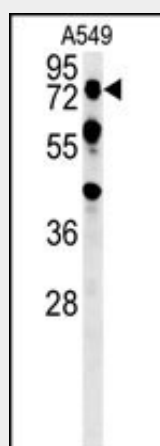
In the kidney expressed only by podocytes, wherein they localize to major processes.

#### **OLFML2A Antibody (N-term) - Protocols**

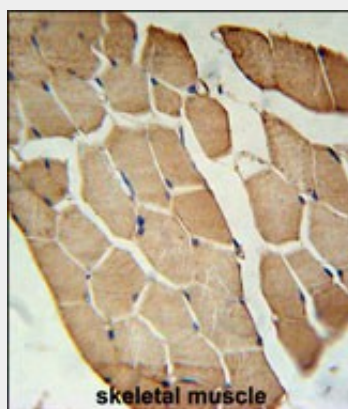
Provided below are standard protocols that you may find useful for product applications.

- [Western Blot](#)
- [Blocking Peptides](#)
- [Dot Blot](#)
- [Immunohistochemistry](#)
- [Immunofluorescence](#)
- [Immunoprecipitation](#)
- [Flow Cytometry](#)
- [Cell Culture](#)

#### **OLFML2A Antibody (N-term) - Images**



OLFML2A Antibody (N-term) (Cat. #AP5808a) western blot analysis in A549 cell line lysates (35ug/lane). This demonstrates the OLFML2A antibody detected the OLFML2A protein (arrow).



OLFML2A Antibody (N-term) (Cat. #AP5808a) immunohistochemistry analysis in formalin fixed and paraffin embedded human skeletal muscle followed by peroxidase conjugation of the secondary antibody and DAB staining. This data demonstrates the use of the OLFML2A Antibody

(N-term) for immunohistochemistry. Clinical relevance has not been evaluated.

#### **OLFML2A Antibody (N-term) - Background**

OLFML2A contains one olfactomedin-like domain. Its exact function is unknown. There are three named isoforms produced by alternative splicing.

#### **OLFML2A Antibody (N-term) - References**

Clark, H.F., et al. Genome Res. 13(10):2265-2270(2003)