

TNFRSF19 Polyclonal Antibody
Purified Rabbit Polyclonal Antibody (Pab)
Catalog # AP58100**Specification**

TNFRSF19 Polyclonal Antibody - Product Information

Application	WB, IHC-P, IHC-F, IF, E
Primary Accession	Q9NS68
Reactivity	Rat, Pig, Dog, Bovine
Host	Rabbit
Clonality	Polyclonal
Calculated MW	43 KDa
Physical State	Liquid
Immunogen	KLH conjugated synthetic peptide derived from human TROY
Epitope Specificity	102-200/423
Isotype	IgG
Purity	
affinity purified by Protein A	
Buffer	0.01M TBS (pH7.4) with 1% BSA, 0.02% Proclin300 and 50% Glycerol.
SUBCELLULAR LOCATION	Membrane; Single-pass type I membrane protein.
SIMILARITY	Contains 3 TNFR-Cys repeats.
SUBUNIT	Associates with TRAF1, TRAF2, TRAF3 and TRAF5. Interacts with LINGO1.
Important Note	This product as supplied is intended for research use only, not for use in human, therapeutic or diagnostic applications.

Background Descriptions

TROY is a member of the TNF receptor superfamily. This receptor is highly expressed during embryonic development. It has been shown to interact with TRAF family members, and to activate the JNK signaling pathway when overexpressed in cells. This receptor is capable of inducing apoptosis by a caspase-independent mechanism, and it is thought to play an essential role in embryonic development. Alternatively spliced transcript variants encoding distinct isoforms have been described.

TNFRSF19 Polyclonal Antibody - Additional Information**Gene ID** 55504**Other Names**

Tumor necrosis factor receptor superfamily member 19, TRADE, Toxicity and JNK inducer, TNFRSF19, TAJ, TROY

Target/Specificity

Highly expressed in prostate. Detected at lower levels in thymus, spleen, testis, uterus, small intestine, colon and peripheral blood leukocytes.

Dilution

WB~~1:1000<br \>IHC-P~~N/A<br \>IHC-F~~N/A<br \>IF~~1:50~200<br \>E~~N/A

Format

0.01M TBS(pH7.4), 0.09% (W/V) sodium azide and 50% Glyce

Storage

Store at -20 °C for one year. Avoid repeated freeze/thaw cycles. When reconstituted in sterile pH 7.4 0.01M PBS or diluent of antibody the antibody is stable for at least two weeks at 2-4 °C.

TNFRSF19 Polyclonal Antibody - Protein Information

Name TNFRSF19

Synonyms TAJ, TROY

Function

Can mediate activation of JNK and NF-kappa-B. May promote caspase-independent cell death.

Cellular Location

Membrane; Single-pass type I membrane protein

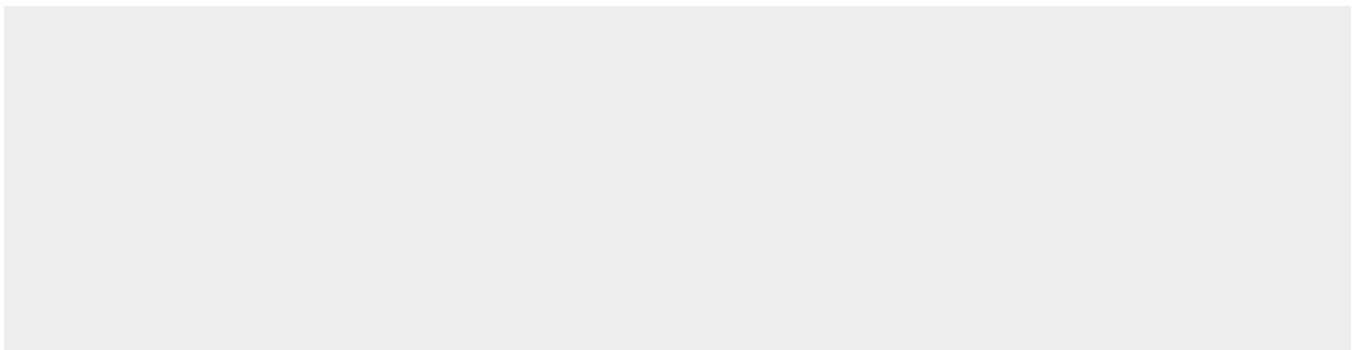
Tissue Location

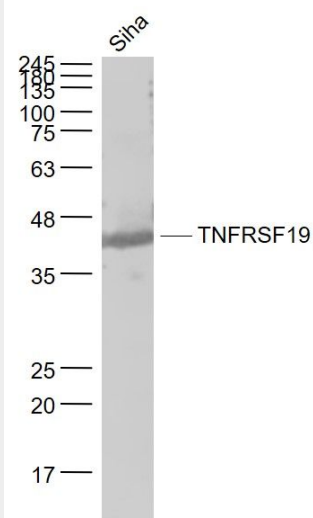
Highly expressed in prostate. Detected at lower levels in thymus, spleen, testis, uterus, small intestine, colon and peripheral blood leukocytes

TNFRSF19 Polyclonal Antibody - Protocols

Provided below are standard protocols that you may find useful for product applications.

- [Western Blot](#)
- [Blocking Peptides](#)
- [Dot Blot](#)
- [Immunohistochemistry](#)
- [Immunofluorescence](#)
- [Immunoprecipitation](#)
- [Flow Cytometry](#)
- [Cell Culture](#)

TNFRSF19 Polyclonal Antibody - Images



Sample:

SiHa(Human) Cell Lysate at 30 ug

Primary: Anti- TNFRSF19 (bs-3852R) at 1/1000 dilution

Secondary: IRDye800CW Goat Anti-Rabbit IgG at 1/20000 dilution

Predicted band size: 43 kD

Observed band size: 43 kD