

OTUD6B Antibody (C-term)
Affinity Purified Rabbit Polyclonal Antibody (Pab)
Catalog # AP5810b**Specification**

OTUD6B Antibody (C-term) - Product Information

Application	WB, FC,E
Primary Accession	Q8N6M0
Other Accession	NP_057107.3
Reactivity	Human
Host	Rabbit
Clonality	Polyclonal
Isotype	Rabbit IgG
Calculated MW	33813
Antigen Region	234-262

OTUD6B Antibody (C-term) - Additional Information**Gene ID** 51633**Other Names**

OTU domain-containing protein 6B, DUBA-5, OTUD6B, DUBA5

Target/Specificity

This OTUD6B antibody is generated from rabbits immunized with a KLH conjugated synthetic peptide between 234-262 amino acids from the C-terminal region of human OTUD6B.

Dilution

WB~~1:1000

FC~~1:10~50

Format

Purified polyclonal antibody supplied in PBS with 0.09% (W/V) sodium azide. This antibody is purified through a protein A column, followed by peptide affinity purification.

Storage

Maintain refrigerated at 2-8°C for up to 2 weeks. For long term storage store at -20°C in small aliquots to prevent freeze-thaw cycles.

Precautions

OTUD6B Antibody (C-term) is for research use only and not for use in diagnostic or therapeutic procedures.

OTUD6B Antibody (C-term) - Protein Information**Name** OTUD6B ([HGNC:24281](#))**Synonyms** DUBA5

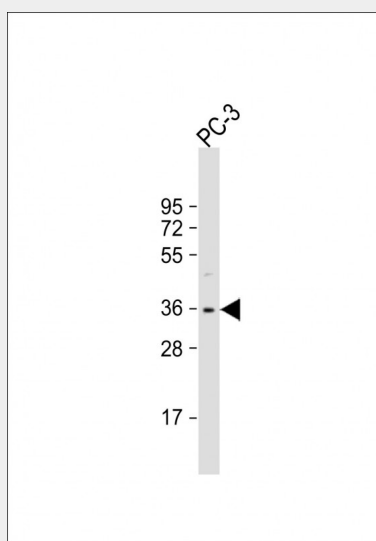
Function [Isoform 1]: Deubiquitinating enzyme that may play a role in the ubiquitin-dependent regulation of protein synthesis, downstream of mTORC1 (PubMed:[21267069](#), PubMed:[27864334](#)). May associate with the protein synthesis initiation complex and modify its ubiquitination to repress translation (PubMed:[27864334](#)). May also repress DNA synthesis and modify different cellular targets thereby regulating cell growth and proliferation (PubMed:[27864334](#)). May also play a role in proteasome assembly and function (PubMed:[28343629](#)).

OTUD6B Antibody (C-term) - Protocols

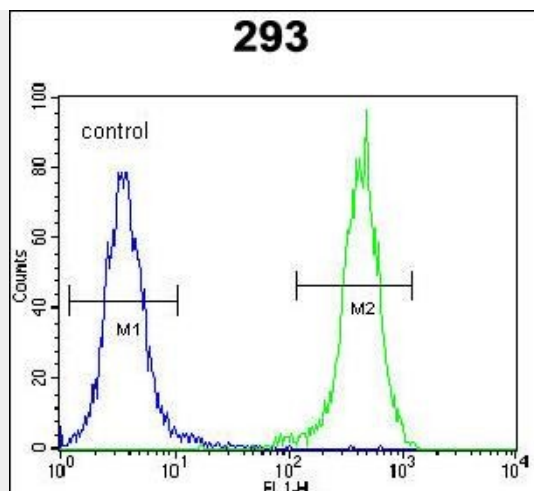
Provided below are standard protocols that you may find useful for product applications.

- [Western Blot](#)
- [Blocking Peptides](#)
- [Dot Blot](#)
- [Immunohistochemistry](#)
- [Immunofluorescence](#)
- [Immunoprecipitation](#)
- [Flow Cytometry](#)
- [Cell Culture](#)

OTUD6B Antibody (C-term) - Images



Anti-OTUD6B Antibody (C-term) at 1:1000 dilution + PC-3 whole cell lysate Lysates/proteins at 20 µg per lane. Secondary Goat Anti-Rabbit IgG, (H+L), Peroxidase conjugated at 1/10000 dilution. Predicted band size : 34 kDa Blocking/Dilution buffer: 5% NFDm/TBST.



OTUD6B Antibody (C-term) (Cat. #AP5810b) flow cytometric analysis of 293 cells (right histogram) compared to a negative control cell (left histogram). FITC-conjugated goat-anti-rabbit secondary antibodies were used for the analysis.

OTUD6B Antibody (C-term) - Background

Deubiquitinating enzymes (DUBs; see MIM 603478) are proteases that specifically cleave ubiquitin (MIM 191339) linkages, negating the action of ubiquitin ligases. DUBA5 belongs to a DUB subfamily characterized by an ovarian tumor (OTU) domain.[supplied by OMIM].

OTUD6B Antibody (C-term) - References

Kimura, K., et al. Genome Res. 16(1):55-65(2006)
Gerhard, D.S., et al. Genome Res. 14 (10B), 2121-2127 (2004) :