

**Squalene Epoxidase Polyclonal Antibody**  
**Purified Rabbit Polyclonal Antibody (Pab)**  
**Catalog # AP58135****Specification****Squalene Epoxidase Polyclonal Antibody - Product Information**

Application	WB, IHC-P, IHC-F, IF, E
Primary Accession	<a href="#">Q14534</a>
Reactivity	Rat, Pig, Dog, Bovine
Host	Rabbit
Clonality	Polyclonal
Calculated MW	64 KDa
Physical State	Liquid
Immunogen	KLH conjugated synthetic peptide derived from human Squalene Epoxidase
Epitope Specificity	101-200/574
Isotype	IgG
<b>Purity</b>	
affinity purified by Protein A	
Buffer	0.01M TBS (pH7.4) with 1% BSA, 0.02% Proclin300 and 50% Glycerol.
SUBCELLULAR LOCATION	Microsome membrane; Multi-pass membrane protein. Endoplasmic reticulum membrane; Multi-pass membrane protein. Belongs to the squalene monooxygenase family.
SIMILARITY	May form a complex with squalene synthase.
SUBUNIT	This product as supplied is intended for research use only, not for use in human, therapeutic or diagnostic applications.
Important Note	

**Background Descriptions**

This protein catalyzes the first oxygenation step in sterol biosynthesis and is suggested to be one of the rate-limiting enzymes in this pathway.

**Squalene Epoxidase Polyclonal Antibody - Additional Information**

**Gene ID** 6713

**Other Names**

Squalene monooxygenase, 1.14.14.17, Squalene epoxidase, SE, SQLE, ERG1

**Dilution**

WB~~1:1000  
IHC-P~~N/A  
IHC-F~~N/A  
IF~~1:50~200  
E~~N/A

**Format**

0.01M TBS(pH7.4), 0.09% (W/V) sodium azide and 50% Glyce

**Storage**

Store at -20 °C for one year. Avoid repeated freeze/thaw cycles. When reconstituted in sterile pH 7.4 0.01M PBS or diluent of antibody the antibody is stable for at least two weeks at 2-4 °C.

**Squalene Epoxidase Polyclonal Antibody - Protein Information**

**Name** SQLE

**Synonyms** ERG1

**Function**

Catalyzes the stereospecific oxidation of squalene to (S)- 2,3-epoxysqualene, and is considered to be a rate-limiting enzyme in steroid biosynthesis.

**Cellular Location**

Microsome membrane; Peripheral membrane protein. Endoplasmic reticulum membrane; Peripheral membrane protein

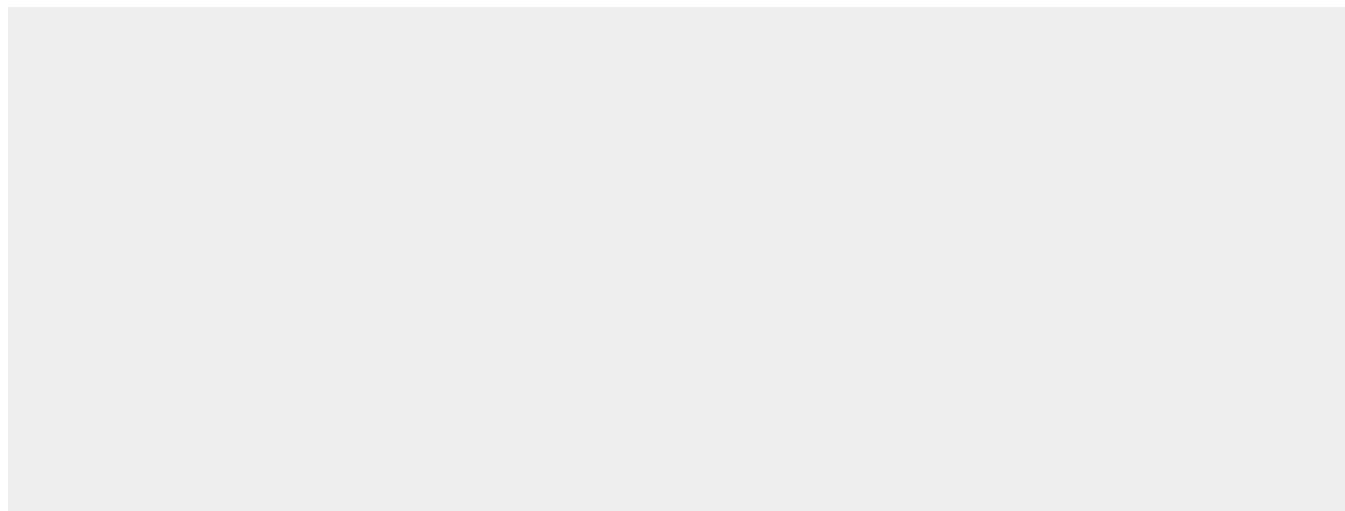
**Tissue Location**

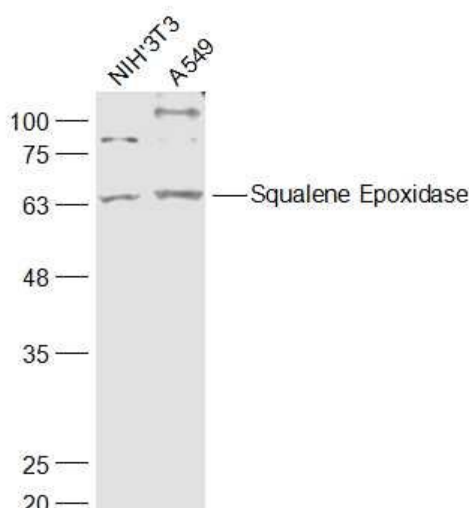
Detected in liver (at protein level).

**Squalene Epoxidase Polyclonal Antibody - Protocols**

Provided below are standard protocols that you may find useful for product applications.

- [Western Blot](#)
- [Blocking Peptides](#)
- [Dot Blot](#)
- [Immunohistochemistry](#)
- [Immunofluorescence](#)
- [Immunoprecipitation](#)
- [Flow Cytometry](#)
- [Cell Culture](#)

**Squalene Epoxidase Polyclonal Antibody - Images**



**Sample:**

NIH/3T3(Mouse) Cell Lysate at 30 ug

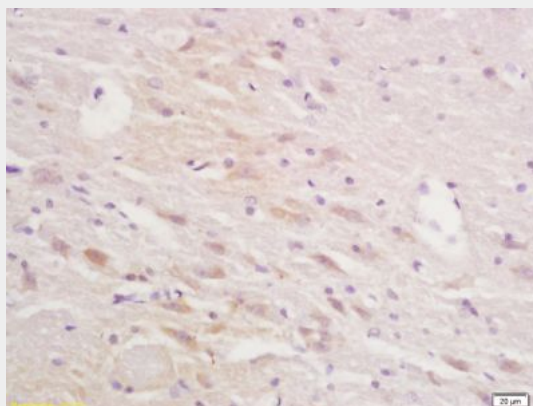
A549(Human) Cell Lysate at 30 ug

Primary: Anti-Squalene Epoxidase (bs-4218R) at 1/1000 dilution

Secondary: IRDye800CW Goat Anti-Rabbit IgG at 1/20000 dilution

Predicted band size: 64 kD

Observed band size: 64 kD



Tissue/cell: rat brain tissue; 4% Paraformaldehyde-fixed and paraffin-embedded;

Antigen retrieval: citrate buffer ( 0.01M, pH 6.0 ), Boiling bathing for 15min; Block endogenous peroxidase by 3% Hydrogen peroxide for 30min; Blocking buffer (normal goat serum,C-0005) at 37°C for 20 min;

Incubation: Anti-Squalene Epoxidase Polyclonal Antibody, Unconjugated(bs-4218R) 1:200, overnight at 4°C, followed by conjugation to the secondary antibody(SP-0023) and DAB(C-0010) staining