

ITPR2 Polyclonal Antibody
Purified Rabbit Polyclonal Antibody (Pab)
Catalog # AP58137**Specification****ITPR2 Polyclonal Antibody - Product Information**

| | |
|-------------------|--------------------------|
| Application | IHC-P, IHC-F, IF, ICC, E |
| Primary Accession | Q14571 |
| Reactivity | Rat, Bovine |
| Host | Rabbit |
| Clonality | Polyclonal |
| Calculated MW | 308064 |

ITPR2 Polyclonal Antibody - Additional Information**Gene ID** 3709**Other Names**

Inositol 1, 4, 5-trisphosphate receptor type 2, IP3 receptor isoform 2, IP3R 2, InsP3R2, Type 2 inositol 1, 4, 5-trisphosphate receptor, Type 2 InsP3 receptor, ITPR2

Dilution

IHC-P ~ ~ N/A
IHC-F ~ ~ N/A
IF ~ ~ 1:50 ~ 200
ICC ~ ~ N/A
E ~ ~ N/A

Format

0.01M TBS(pH7.4), 0.09% (W/V) sodium azide and 50% Glyce

Storage

Store at -20 °C for one year. Avoid repeated freeze/thaw cycles. When reconstituted in sterile pH 7.4 0.01M PBS or diluent of antibody the antibody is stable for at least two weeks at 2-4 °C.

ITPR2 Polyclonal Antibody - Protein Information**Name** ITPR2 ([HGNC:6181](#))**Function**

Inositol 1,4,5-trisphosphate-gated calcium channel that upon inositol 1,4,5-trisphosphate binding transports calcium from the endoplasmic reticulum lumen to cytoplasm. Exists in two states; a long- lived closed state where the channel is essentially 'parked' with only very rare visits to an open state and that ligands facilitate the transition from the 'parked' state into a 'drive' mode represented by periods of bursting activity (By similarity).

Cellular Location

Endoplasmic reticulum membrane {ECO:0000250|UniProtKB:Q9Z329}; Multi-pass membrane protein. Cytoplasmic vesicle, secretory vesicle membrane {ECO:0000250|UniProtKB:Q8WN96};

Multi-pass membrane protein. Note=Forms clusters on endoplasmic reticulum membrane upon inositol 1,4,5-trisphosphate binding {ECO:0000250|UniProtKB:Q9Z329}

Tissue Location

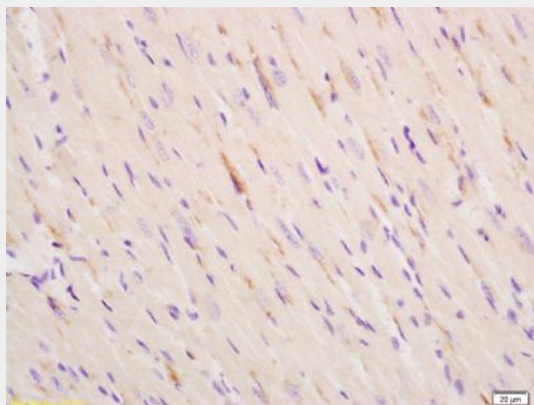
[Isoform Short]: Found in skeletal muscle and heart.

ITPR2 Polyclonal Antibody - Protocols

Provided below are standard protocols that you may find useful for product applications.

- [Western Blot](#)
- [Blocking Peptides](#)
- [Dot Blot](#)
- [Immunohistochemistry](#)
- [Immunofluorescence](#)
- [Immunoprecipitation](#)
- [Flow Cytometry](#)
- [Cell Culture](#)

ITPR2 Polyclonal Antibody - Images



Tissue/cell: mouse heart tissue; 4% Paraformaldehyde-fixed and paraffin-embedded;

Antigen retrieval: citrate buffer (0.01M, pH 6.0), Boiling bathing for 15min; Block endogenous peroxidase by 3% Hydrogen peroxide for 30min; Blocking buffer (normal goat serum,C-0005) at 37°C for 20 min;

Incubation: Anti-ITPR2 Polyclonal Antibody, Unconjugated(bs-4243R) 1:200, overnight at 4°C, followed by conjugation to the secondary antibody(SP-0023) and DAB(C-0010) staining