

EBF3 Polyclonal Antibody
Purified Rabbit Polyclonal Antibody (Pab)
Catalog # AP58145

Specification

EBF3 Polyclonal Antibody - Product Information

Application	WB, IHC-P, IHC-F, IF, E
Primary Accession	O9H4W6
Reactivity	Rat, Pig, Dog, Bovine
Host	Rabbit
Clonality	Polyclonal
Calculated MW	25 KDa
Physical State	Liquid
Immunogen	KLH conjugated synthetic peptide derived from human EB3
Epitope Specificity	75-185/281
Isotype	IgG
Purity	
affinity purified by Protein A	
Buffer	0.01M TBS (pH7.4) with 1% BSA, 0.02% Proclin300 and 50% Glycerol.
SUBCELLULAR LOCATION	Cytoplasm, cytoskeleton.
SIMILARITY	Belongs to the MAPRE family.Contains 1 CH (calponin-homology) domain.Contains 1 EB1 C-terminal domain.
SUBUNIT	Interacts with APC2 (By similarity). Interacts with DCTN1 and SRCIN1. Binds to the C-terminal domain of APC. Binds monomeric and polymerized tubulin.
Important Note	This product as supplied is intended for research use only, not for use in human, therapeutic or diagnostic applications.

Background Descriptions

May be involved in microtubule polymerization, and spindle function by stabilizing microtubules and anchoring them at centrosomes. May play a role in cell migration.

EBF3 Polyclonal Antibody - Additional Information

Gene ID 253738

Other Names

Transcription factor COE3, Early B-cell factor 3, EBF-3, Olf-1/EBF-like 2, O/E-2, OE-2, EBF3, COE3

Target/Specificity

Predominantly expressed in brain and muscle.

Dilution

WB~~1:1000<br \><span class

=["dilution_IHC-P">IHC-P~N/A<br \><span class
=\["dilution_IHC-F">IHC-F~N/A<br \><span class
=\\["dilution_IF">IF~1:50~200<br \>E~N/A\\\]\\\(#\\\)\\]\\(#\\)\]\(#\)](#)

Format

0.01M TBS(pH7.4), 0.09% (W/V) sodium azide and 50% Glyce

Storage

Store at -20 °C for one year. Avoid repeated freeze/thaw cycles. When reconstituted in sterile pH 7.4 0.01M PBS or diluent of antibody the antibody is stable for at least two weeks at 2-4 °C.

EBF3 Polyclonal Antibody - Protein Information

Name EBF3

Synonyms COE3

Function

Transcriptional activator (PubMed:[28017370](http://www.uniprot.org/citations/28017370), PubMed:[28017372](http://www.uniprot.org/citations/28017372), PubMed:[28017373](http://www.uniprot.org/citations/28017373)). Recognizes variations of the palindromic sequence 5'-ATTCCCNNGGGAATT-3' (By similarity).

Cellular Location

Nucleus.

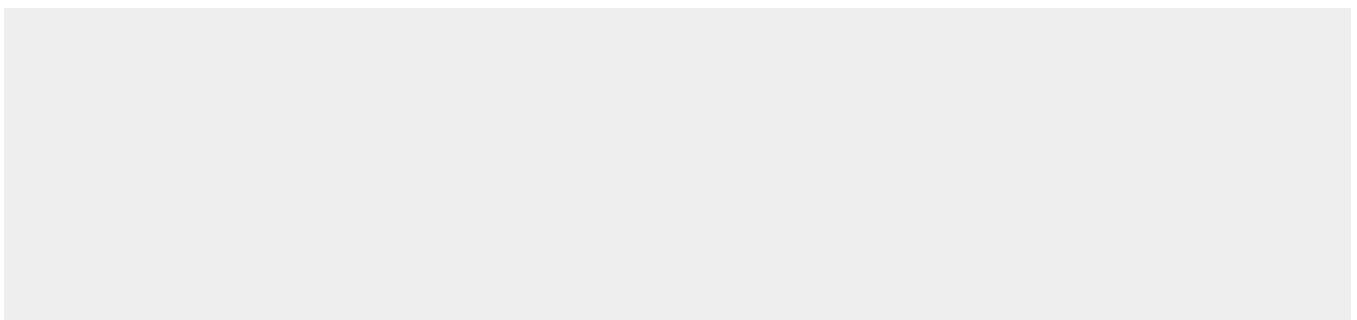
Tissue Location

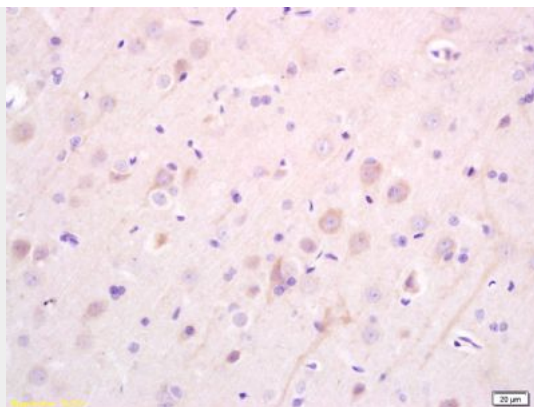
Expressed in brain..

EBF3 Polyclonal Antibody - Protocols

Provided below are standard protocols that you may find useful for product applications.

- [Western Blot](#)
- [Blocking Peptides](#)
- [Dot Blot](#)
- [Immunohistochemistry](#)
- [Immunofluorescence](#)
- [Immunoprecipitation](#)
- [Flow Cytometry](#)
- [Cell Culture](#)

EBF3 Polyclonal Antibody - Images



Tissue/cell: rat brain tissue; 4% Paraformaldehyde-fixed and paraffin-embedded;

Antigen retrieval: citrate buffer (0.01M, pH 6.0), Boiling bathing for 15min; Block endogenous peroxidase by 3% Hydrogen peroxide for 30min; Blocking buffer (normal goat serum,C-0005) at 37°C for 20 min;

Incubation: Anti-EB3 Polyclonal Antibody, Unconjugated(bs-4275R) 1:200, overnight at 4°C, followed by conjugation to the secondary antibody(SP-0023) and DAB(C-0010) staining