

ELAC2/HPC2 Polyclonal Antibody
Purified Rabbit Polyclonal Antibody (Pab)
Catalog # AP58146**Specification****ELAC2/HPC2 Polyclonal Antibody - Product Information**

Application	IHC-P, IHC-F, IF, E
Primary Accession	O9BQ52
Reactivity	Rat, Dog
Host	Rabbit
Clonality	Polyclonal
Calculated MW	92219

ELAC2/HPC2 Polyclonal Antibody - Additional Information**Gene ID** 60528**Other Names**

Zinc phosphodiesterase ELAC protein 2, 3.1.26.11, ElaC homolog protein 2, Heredity prostate cancer protein 2, Ribonuclease Z 2, RNase Z 2, tRNA 3 endonuclease 2, tRNase Z 2, ELAC2, HPC2

Dilution

IHC-P ~ ~ N/A
IHC-F ~ ~ N/A
IF ~ ~ 1:50 ~ 200
E ~ ~ N/A

Format

0.01M TBS(pH7.4), 0.09% (W/V) sodium azide and 50% Glyce

Storage

Store at -20 °C for one year. Avoid repeated freeze/thaw cycles. When reconstituted in sterile pH 7.4 0.01M PBS or diluent of antibody the antibody is stable for at least two weeks at 2-4 °C.

ELAC2/HPC2 Polyclonal Antibody - Protein Information**Name** ELAC2**Synonyms** HPC2**Function**

Zinc phosphodiesterase, which displays mitochondrial tRNA 3'- processing endonuclease activity. Involved in tRNA maturation, by removing a 3'-trailer from precursor tRNA (PubMed:21593607). Associates with mitochondrial DNA complexes at the nucleoids to initiate RNA processing and ribosome assembly (PubMed:24703694).

Cellular Location

Mitochondrion. Mitochondrion matrix, mitochondrion nucleoid. Nucleus Note=Mainly mitochondrial

Tissue Location

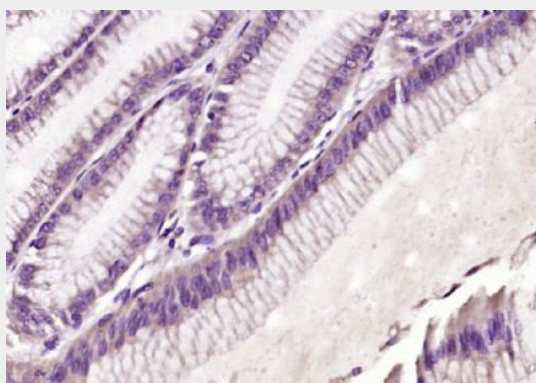
Widely expressed. Highly expressed in heart, placenta, liver, skeletal muscle, kidney, pancreas, testis and ovary Weakly expressed in brain, lung, spleen, thymus, prostate, small intestine, colon and leukocytes.

ELAC2/HPC2 Polyclonal Antibody - Protocols

Provided below are standard protocols that you may find useful for product applications.

- [Western Blot](#)
- [Blocking Peptides](#)
- [Dot Blot](#)
- [Immunohistochemistry](#)
- [Immunofluorescence](#)
- [Immunoprecipitation](#)
- [Flow Cytometry](#)
- [Cell Culture](#)

ELAC2/HPC2 Polyclonal Antibody - Images



Paraformaldehyde-fixed, paraffin embedded (human gastric carcinoma); Antigen retrieval by boiling in sodium citrate buffer (pH6.0) for 15min; Block endogenous peroxidase by 3% hydrogen peroxide for 20 minutes; Blocking buffer (normal goat serum) at 37°C for 30min; Antibody incubation with (ELAC2) Polyclonal Antibody, Unconjugated (bs-4276R) at 1:200 overnight at 4°C, followed by operating according to SP Kit(Rabbit) (sp-0023) instructions and DAB staining.