

5HT3B receptor Polyclonal Antibody
Purified Rabbit Polyclonal Antibody (Pab)
Catalog # AP58148**Specification**

5HT3B receptor Polyclonal Antibody - Product Information

Application	WB, IHC-P, IHC-F, IF, ICC, E
Primary Accession	O95264
Reactivity	Rat, Bovine
Host	Rabbit
Clonality	Polyclonal
Calculated MW	50 KDa
Physical State	Liquid
Immunogen	KLH conjugated synthetic peptide derived from human 5HTR3B/5HT3B receptor
Epitope Specificity	101-200/441
Isotype	IgG
Purity	
affinity purified by Protein A	
Buffer	0.01M TBS (pH7.4) with 1% BSA, 0.02% Proclin300 and 50% Glycerol.
SUBCELLULAR LOCATION	Cell membrane; Multi-pass membrane protein. Note=Presumably retained within the endoplasmic reticulum unless complexed with HTR3A.
SIMILARITY	Belongs to the ligand-gated ion channel (TC 1.A.9) family. 5-hydroxytryptamine receptor (TC 1.A.9.2) subfamily. HTR3B sub-subfamily.
SUBUNIT	Forms a pentaheteromeric complex with HTR3A. Not functional as a homomeric complex.
Post-translational modifications	N-glycosylation required for membrane localization.
Important Note	This product as supplied is intended for research use only, not for use in human, therapeutic or diagnostic applications.

Background Descriptions

This is one of the several different receptors for 5-hydroxytryptamine (serotonin), a biogenic hormone that functions as a neurotransmitter, a hormone, and a mitogen. This receptor is a ligand-gated ion channel, which when activated causes fast, depolarizing responses. It is a cation-specific, but otherwise relatively nonselective, ion channel.

5HT3B receptor Polyclonal Antibody - Additional Information**Gene ID 9177****Other Names**

5-hydroxytryptamine receptor 3B, 5-HT3-B, 5-HT3B, Serotonin receptor 3B, HTR3B

Target/Specificity

Expressed in the brain cortex, in the caudate nucleus, the hippocampus, the thalamus and the amygdala. Detected in the kidney and testis as well as in monocytes of the spleen, small and large intestine, uterus, prostate, ovary and placenta.

Dilution

WB~~1:1000
IHC-P~~N/A
IHC-F~~N/A
IF~~1:50~200
ICC~~N/A
E~~N/A

Format

0.01M TBS(pH7.4), 0.09% (W/V) sodium azide and 50% Glyce

Storage

Store at -20 °C for one year. Avoid repeated freeze/thaw cycles. When reconstituted in sterile pH 7.4 0.01M PBS or diluent of antibody the antibody is stable for at least two weeks at 2-4 °C.

5HT3B receptor Polyclonal Antibody - Protein Information

Name HTR3B ([HGNC:5298](#))

Function

Forms serotonin (5-hydroxytryptamine/5-HT3)-activated cation- selective channel complexes, which when activated cause fast, depolarizing responses in neurons.

Cellular Location

Postsynaptic cell membrane; Multi-pass membrane protein. Cell membrane; Multi-pass membrane protein. Note=Presumably retained within the endoplasmic reticulum unless complexed with HTR3A

Tissue Location

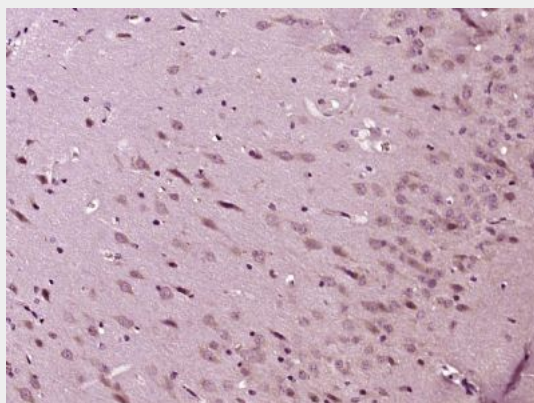
Expressed in the brain cortex, in the caudate nucleus, the hippocampus, the thalamus and the amygdala. Detected in the kidney and testis as well as in monocytes of the spleen, small and large intestine, uterus, prostate, ovary and placenta

5HT3B receptor Polyclonal Antibody - Protocols

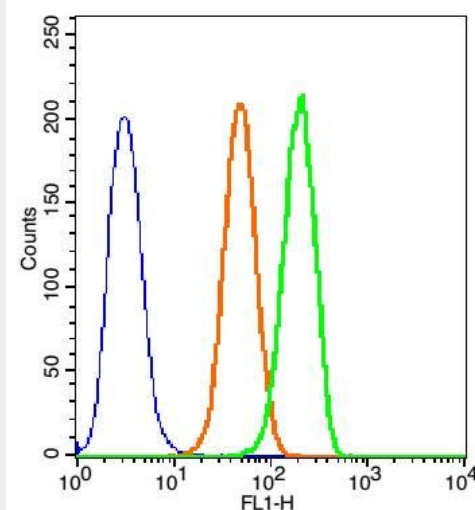
Provided below are standard protocols that you may find useful for product applications.

- [Western Blot](#)
- [Blocking Peptides](#)
- [Dot Blot](#)
- [Immunohistochemistry](#)
- [Immunofluorescence](#)
- [Immunoprecipitation](#)
- [Flow Cytometry](#)
- [Cell Culture](#)

5HT3B receptor Polyclonal Antibody - Images



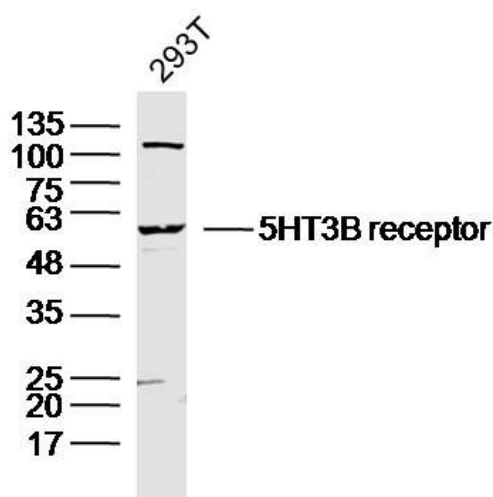
Paraformaldehyde-fixed, paraffin embedded (Rat brain); Antigen retrieval by boiling in sodium citrate buffer (pH6.0) for 15min; Block endogenous peroxidase by 3% hydrogen peroxide for 20 minutes; Blocking buffer (normal goat serum) at 37°C for 30min; Antibody incubation with (5HT3B receptor) Polyclonal Antibody, Unconjugated (bs-4289R) at 1:400 overnight at 4°C, followed by operating according to SP Kit(Rabbit) (sp-0023) instructions and DAB staining.



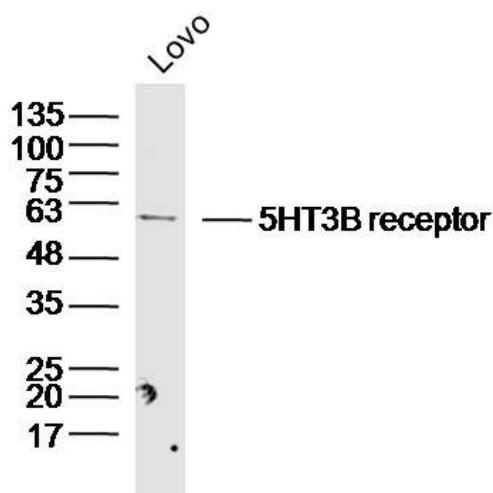
Blank control(blue):293T Cells(fixed with 2% paraformaldehyde (10 min) and then permeabilized with ice-cold 90% methanol for 30 min on ice).

Primary Antibody: Rabbit Anti-5HT3B receptor Phospho-c-Fos (Thr325)/AF488 Conjugated antibody (bs-4289R-AF488), Dilution: 1ug in 100 ul 1X PBS containing 0.5% BSA;

Isotype Control Antibody: Rabbit IgG/AF488(orange) ,used under the same conditions.



Sample: 293T Cell (Human) Lysate at 40 ug
Primary: Anti- 5HT3B receptor (bs-4289R) at 1/300 dilution
Secondary: IRDye800CW Goat Anti-Rabbit IgG at 1/20000 dilution
Predicted band size: 50 kD
Observed band size: 55 kD



Sample: Lovo Cell (Human) Lysate at 40 ug
Primary: Anti- 5HT3B receptor (bs-4289R) at 1/300 dilution
Secondary: IRDye800CW Goat Anti-Rabbit IgG at 1/20000 dilution
Predicted band size: 50 kD
Observed band size: 55 kD