

**SHISA7 Antibody (Center)**  
**Affinity Purified Rabbit Polyclonal Antibody (Pab)**  
**Catalog # AP5815c****Specification**

---

**SHISA7 Antibody (Center) - Product Information**

Application	WB,E
Primary Accession	<a href="#">A6NL88</a>
Other Accession	<a href="#">Q8C3Q5</a> , <a href="#">NP_001138648.1</a>
Reactivity	Human, Mouse
Host	Rabbit
Clonality	Polyclonal
Isotype	Rabbit IgG
Antigen Region	308-337

**SHISA7 Antibody (Center) - Additional Information****Gene ID** 729956**Other Names**

Protein shisa-7, Protein shisa-6-like, SHISA7

**Target/Specificity**

This SHISA7 antibody is generated from rabbits immunized with a KLH conjugated synthetic peptide between 308-337 amino acids from the Central region of human SHISA7.

**Dilution**

WB~~1:1000

E~~Use at an assay dependent concentration.

**Format**

Purified polyclonal antibody supplied in PBS with 0.09% (W/V) sodium azide. This antibody is purified through a protein A column, followed by peptide affinity purification.

**Storage**

Maintain refrigerated at 2-8°C for up to 2 weeks. For long term storage store at -20°C in small aliquots to prevent freeze-thaw cycles.

**Precautions**

SHISA7 Antibody (Center) is for research use only and not for use in diagnostic or therapeutic procedures.

**SHISA7 Antibody (Center) - Protein Information****Name** SHISA7 ([HGNC:35409](#))**Function** Transmembrane protein that regulates gamma-aminobutyric acid type A receptor (GABA(A)R) trafficking, channel deactivation kinetics and pharmacology, necessary for fast

inhibitory transmission in the brain. Enhances the action of benzodiazepine, a primary GABA(A)Rs target drug, in the brain. May affect channel kinetics of AMPA-type glutamate receptors (AMPA), the brain's main excitatory neurotransmitter, necessary for synaptic hippocampal plasticity, and memory recall. May regulate the induction and maintenance of long-term potentiation at Schaffer collaterals/CA3-CA1 excitatory synapses.

#### Cellular Location

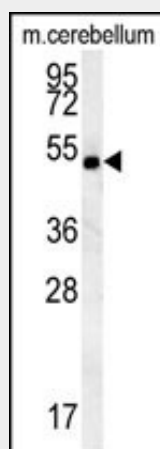
Postsynaptic density membrane {ECO:0000250|UniProtKB:Q8C3Q5}; Single-pass type I membrane protein {ECO:0000250|UniProtKB:Q8C3Q5}. Note=Localizes at GABAergic inhibitory synapses and colocalizes with gephyrin in hippocampal neurons {ECO:0000250|UniProtKB:Q8C3Q5}

### SHISA7 Antibody (Center) - Protocols

Provided below are standard protocols that you may find useful for product applications.

- [Western Blot](#)
- [Blocking Peptides](#)
- [Dot Blot](#)
- [Immunohistochemistry](#)
- [Immunofluorescence](#)
- [Immunoprecipitation](#)
- [Flow Cytometry](#)
- [Cell Culture](#)

### SHISA7 Antibody (Center) - Images



SHISA7 Antibody (Center) (Cat. #AP5815c) western blot analysis in mouse cerebellum tissue lysates (15ug/lane). This demonstrates the SHISA7 antibody detected SHISA7 protein (arrow).

### SHISA7 Antibody (Center) - References

Grimwood, J., et al. Nature 428(6982):529-535(2004)  
Venter, J.C., et al. Science 291(5507):1304-1351(2001)