

ZNF641 Polyclonal Antibody
Purified Rabbit Polyclonal Antibody (Pab)
Catalog # AP58160**Specification****ZNF641 Polyclonal Antibody - Product Information**

Application	WB, IHC-P, IHC-F, IF, ICC, E
Primary Accession	Q96N77
Reactivity	Rat, Pig, Dog, Bovine
Host	Rabbit
Clonality	Polyclonal
Calculated MW	50 KDa
Physical State	Liquid
Immunogen	KLH conjugated synthetic peptide derived from human ZNF641
Epitope Specificity	81-180/438
Isotype	IgG
Purity	
affinity purified by Protein A	
Buffer	Preservative: 0.02% Proclin300, Constituents: 1% BSA, 0.01M PBS, pH7.4.
SUBCELLULAR LOCATION	Nucleus.
Important Note	This product as supplied is intended for research use only, not for use in human, therapeutic or diagnostic applications.

Background Descriptions

ZNF641 belongs to the krueppel C2H2-type zinc-finger protein family. It contains 5 C2H2-type zinc fingers and 1 KRAB domain. ZNF641 activates transcriptional activities of SRE and AP-1.

ZNF641 Polyclonal Antibody - Additional Information

Gene ID 121274

Other Names

Zinc finger protein 641, ZNF641

Dilution

WB~~1:1000<br \>IHC-P~~N/A<br \>IHC-F~~N/A<br \>IF~~1:50~200<br \>ICC~~N/A<br \>E~~N/A

Format

0.01M TBS(pH7.4), 0.09% (W/V) sodium azide and 50% Glyce

Storage

Store at -20 °C for one year. Avoid repeated freeze/thaw cycles. When reconstituted in sterile pH

7.4 0.01M PBS or diluent of antibody the antibody is stable for at least two weeks at 2-4 °C.

ZNF641 Polyclonal Antibody - Protein Information

Name ZNF641

Function

Transcriptional activator. Activates transcriptional activities of SRE and AP-1.

Cellular Location

Nucleus.

Tissue Location

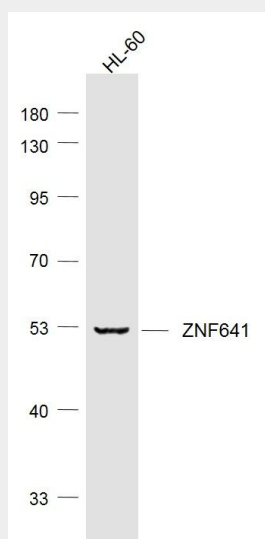
Highly expressed in skeletal muscle, moderate expression in heart, liver, and pancreas, lower expression in placenta, no expression seen in brain, lung, and kidney

ZNF641 Polyclonal Antibody - Protocols

Provided below are standard protocols that you may find useful for product applications.

- [Western Blot](#)
- [Blocking Peptides](#)
- [Dot Blot](#)
- [Immunohistochemistry](#)
- [Immunofluorescence](#)
- [Immunoprecipitation](#)
- [Flow Cytometry](#)
- [Cell Culture](#)

ZNF641 Polyclonal Antibody - Images



Sample:

HL-60 (Human) Cell Lysate at 30 ug

Primary: Anti-ZNF641 (bs-4342R) at 1/1000 dilution

Secondary: IRDye800CW Goat Anti-Rabbit IgG at 1/20000 dilution

Predicted band size: 50 kD
Observed band size: 50 kD