

ZNF701 Polyclonal Antibody
Purified Rabbit Polyclonal Antibody (Pab)
Catalog # AP58173**Specification****ZNF701 Polyclonal Antibody - Product Information**

Application	WB, IHC-P, IHC-F, IF, ICC, E
Primary Accession	Q9NV72
Host	Rabbit
Clonality	Polyclonal
Calculated MW	61 KDa
Physical State	Liquid
Immunogen	KLH conjugated synthetic peptide derived from human ZNF701
Epitope Specificity	131-230/531
Isotype	IgG
Purity	
affinity purified by Protein A	
Buffer	Preservative: 0.02% Proclin300, Constituents: 1% BSA, 0.01M PBS, pH7.4.
SUBCELLULAR LOCATION	Nucleus.
SIMILARITY	Belongs to the krueppel C2H2-type zinc-finger protein family. Contains 7 C2H2-type zinc fingers. Contains 1 KRAB domain.
Important Note	This product as supplied is intended for research use only, not for use in human, therapeutic or diagnostic applications.

Background Descriptions

ZNF701 (Zinc Finger Protein 701) is a Protein Coding gene. Among its related pathways are Gene Expression. GO annotations related to this gene include nucleic acid binding. An important paralog of this gene is ZNF888.

ZNF701 Polyclonal Antibody - Additional Information

Gene ID 55762

Other Names

Zinc finger protein 701, ZNF701

Dilution

WB~1:1000
IHC-P~N/A
IHC-F~N/A
IF~1:50~200
ICC~N/A
E~N/A

Storage

Store at -20 °C for one year. Avoid repeated freeze/thaw cycles. When reconstituted in sterile pH 7.4 0.01M PBS or diluent of antibody the antibody is stable for at least two weeks at 2-4 °C.

ZNF701 Polyclonal Antibody - Protein Information

Name ZNF701

Function

May be involved in transcriptional regulation.

Cellular Location

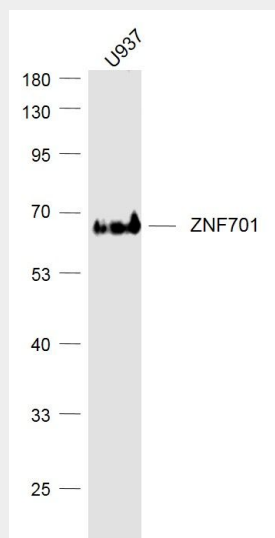
Nucleus.

ZNF701 Polyclonal Antibody - Protocols

Provided below are standard protocols that you may find useful for product applications.

- [Western Blot](#)
- [Blocking Peptides](#)
- [Dot Blot](#)
- [Immunohistochemistry](#)
- [Immunofluorescence](#)
- [Immunoprecipitation](#)
- [Flow Cytometry](#)
- [Cell Culture](#)

ZNF701 Polyclonal Antibody - Images



ample:

U937 (Human) Cell Lysate at 30 ug

Primary: Anti-ZNF701 (bs-4372R) at 1/1000 dilution

Secondary: IRDye800CW Goat Anti-Rabbit IgG at 1/20000 dilution

Predicted band size: 61 kD

Observed band size: 61 kD

