

Scratch 2 Polyclonal Antibody
Purified Rabbit Polyclonal Antibody (Pab)
Catalog # AP58207

Specification

Scratch 2 Polyclonal Antibody - Product Information

Application	WB, IHC-P, IHC-F, IF, ICC
Primary Accession	O9NQ03
Host	Rabbit
Clonality	Polyclonal
Calculated MW	33 KDa
Physical State	Liquid
Immunogen	KLH conjugated synthetic peptide derived from human Scratch 2
Epitope Specificity	1-100/307
Isotype	IgG
Purity	
affinity purified by Protein A	
Buffer	Preservative: 0.02% Proclin300, Constituents: 1% BSA, 0.01M PBS, pH7.4.
SUBCELLULAR LOCATION	Nuclear.
Important Note	This product as supplied is intended for research use only, not for use in human, therapeutic or diagnostic applications.

Background Descriptions

Scratch 2 belongs to the snail C2H2-type zinc-finger protein family. It contains 5 C2H2-type zinc fingers and may be involved in transcriptional regulation.

Scratch 2 Polyclonal Antibody - Additional Information

Gene ID 85508

Other Names

Transcriptional repressor scratch 2, Scratch homolog 2 zinc finger protein, SCRT2

Dilution

WB~~1:1000<br \>IHC-P~~N/A<br \>IHC-F~~N/A<br \>IF~~1:50~200<br \>ICC~~N/A

Storage

Store at -20 °C for one year. Avoid repeated freeze/thaw cycles. When reconstituted in sterile pH 7.4 0.01M PBS or diluent of antibody the antibody is stable for at least two weeks at 2-4 °C.

Scratch 2 Polyclonal Antibody - Protein Information

Name SCRT2

Function

May be involved in transcriptional regulation.

Cellular Location

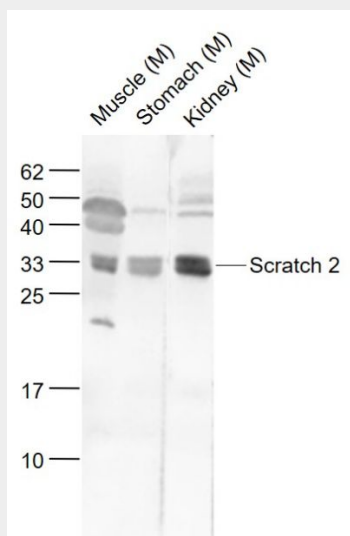
Nucleus.

Scratch 2 Polyclonal Antibody - Protocols

Provided below are standard protocols that you may find useful for product applications.

- [Western Blot](#)
- [Blocking Peptides](#)
- [Dot Blot](#)
- [Immunohistochemistry](#)
- [Immunofluorescence](#)
- [Immunoprecipitation](#)
- [Flow Cytometry](#)
- [Cell Culture](#)

Scratch 2 Polyclonal Antibody - Images



Sample:

Muscle (Mouse) Lysate at 40 ug

Stomach (Mouse) Lysate at 40 ug

Kidney (Mouse) Lysate at 40 ug

Primary: Anti-Scratch 2 (bs-4440R) at 1/1000 dilution

Secondary: IRDye800CW Goat Anti-Rabbit IgG at 1/20000 dilution

Predicted band size: 33 kD

Observed band size: 33 kD