

**SDF2L1 Polyclonal Antibody**  
**Purified Rabbit Polyclonal Antibody (Pab)**  
**Catalog # AP58210****Specification**

---

**SDF2L1 Polyclonal Antibody - Product Information**

Application	IHC-P
Primary Accession	<a href="#">O9HCN8</a>
Reactivity	Dog, Bovine
Host	Rabbit
Clonality	Polyclonal
Calculated MW	23598

**SDF2L1 Polyclonal Antibody - Additional Information****Gene ID** 23753**Other Names**

Stromal cell-derived factor 2-like protein 1, SDF2-like protein 1, PWP1-interacting protein 8, SDF2L1

**Format**

0.01M TBS(pH7.4), 0.09% (W/V) sodium azide and 50% Glyce

**Storage**

Store at -20 °C for one year. Avoid repeated freeze/thaw cycles. When reconstituted in sterile pH 7.4 0.01M PBS or diluent of antibody the antibody is stable for at least two weeks at 2-4 °C.

**SDF2L1 Polyclonal Antibody - Protein Information****Name** SDF2L1**Cellular Location**

Endoplasmic reticulum lumen {ECO:0000255|PROSITE- ProRule:PRU10138}

**Tissue Location**

Ubiquitously expressed with high expression in testis, moderate expression in the pancreas, spleen, prostate, small intestine and colon. Very low expression is seen in brain and skeletal muscle.

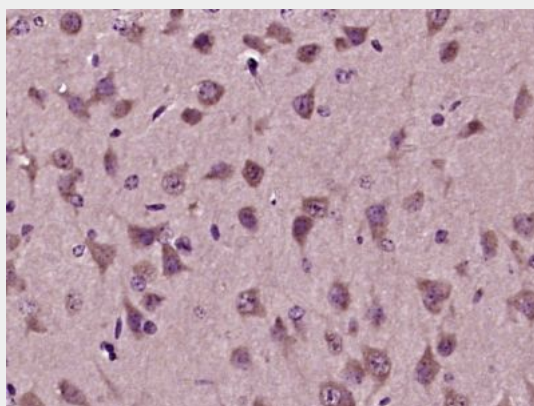
**SDF2L1 Polyclonal Antibody - Protocols**

Provided below are standard protocols that you may find useful for product applications.

- [Western Blot](#)
- [Blocking Peptides](#)

- [Dot Blot](#)
- [Immunohistochemistry](#)
- [Immunofluorescence](#)
- [Immunoprecipitation](#)
- [Flow Cytometry](#)
- [Cell Culture](#)

#### **SDF2L1 Polyclonal Antibody - Images**



Paraformaldehyde-fixed, paraffin embedded (mouse brain tissue); Antigen retrieval by boiling in sodium citrate buffer (pH6.0) for 15min; Block endogenous peroxidase by 3% hydrogen peroxide for 20 minutes; Blocking buffer (normal goat serum) at 37°C for 30min; Antibody incubation with (SDF2L1) Polyclonal Antibody, Unconjugated (bs-4446R) at 1:400 overnight at 4°C, followed by operating according to SP Kit(Rabbit) (sp-0023) instructions and DAB staining.