

**ATXN3L Polyclonal Antibody**  
**Purified Rabbit Polyclonal Antibody (Pab)**  
**Catalog # AP58246****Specification****ATXN3L Polyclonal Antibody - Product Information**

Application	WB, IHC-P, IHC-F, IF
Primary Accession	<a href="#">O9H3M9</a>
Host	Rabbit
Clonality	Polyclonal
Calculated MW	41 KDa
Physical State	Liquid
Immunogen	KLH conjugated synthetic peptide derived from human ATXN3L
Epitope Specificity	251-355/355
Isotype	IgG
<b>Purity</b>	
affinity purified by Protein A	
Buffer	0.01M TBS (pH7.4) with 1% BSA, 0.02% Proclin300 and 50% Glycerol.
SUBCELLULAR LOCATION	Nucleus.
SIMILARITY	Contains 1 Josephin domain.Contains 2 UIM (ubiquitin-interacting motif) repeats.
Important Note	This product as supplied is intended for research use only, not for use in human, therapeutic or diagnostic applications.

**Background Descriptions**

This intronless gene may be a pseudogene (PMID:11450850). This gene is similar to the multi-exon gene which encodes ataxin 3 and contains a coding region which could encode a protein similar to ataxin 3. Mutations in the gene encoding ataxin 3 are associated with Machado-Joseph disease. [provided by RefSeq, Sep 2011]

**ATXN3L Polyclonal Antibody - Additional Information****Gene ID** 92552**Other Names**

Ataxin-3-like protein, 3.4.19.12, Machado-Joseph disease protein 1-like, ATXN3L (<a href="http://www.genenames.org/cgi-bin/gene\_symbol\_report?hgnc\_id=24173" target="\_blank">HGNC:24173</a>), ATX3L, MJDL

**Dilution**

<span class = "dilution\_WB">WB~~1:1000</span><br \><span class = "dilution\_IHC-P">IHC-P~~N/A</span><br \><span class = "dilution\_IHC-F">IHC-F~~N/A</span><br \><span class = "dilution\_IF">IF~~1:50~200</span>

**Format**

0.01M TBS(pH7.4), 0.09% (W/V) sodium azide and 50% Glyce

**Storage**

Store at -20 °C for one year. Avoid repeated freeze/thaw cycles. When reconstituted in sterile pH 7.4 0.01M PBS or diluent of antibody the antibody is stable for at least two weeks at 2-4 °C.

**ATXN3L Polyclonal Antibody - Protein Information**

**Name** ATXN3L ([HGNC:24173](#))

**Synonyms** ATX3L, MJDL

**Function**

Deubiquitinating enzyme that cleaves both 'Lys-48'-linked and 'Lys-63'-linked poly-ubiquitin chains (in vitro) (PubMed:<a href="http://www.uniprot.org/citations/21118805" target="\_blank">21118805</a>). Acts as a deubiquitinating enzyme for the transcription factor KLF5, playing a role in the regulation of KLF5 stability (PubMed:<a href="http://www.uniprot.org/citations/26079537" target="\_blank">26079537</a>).

**Cellular Location**

Nucleus.

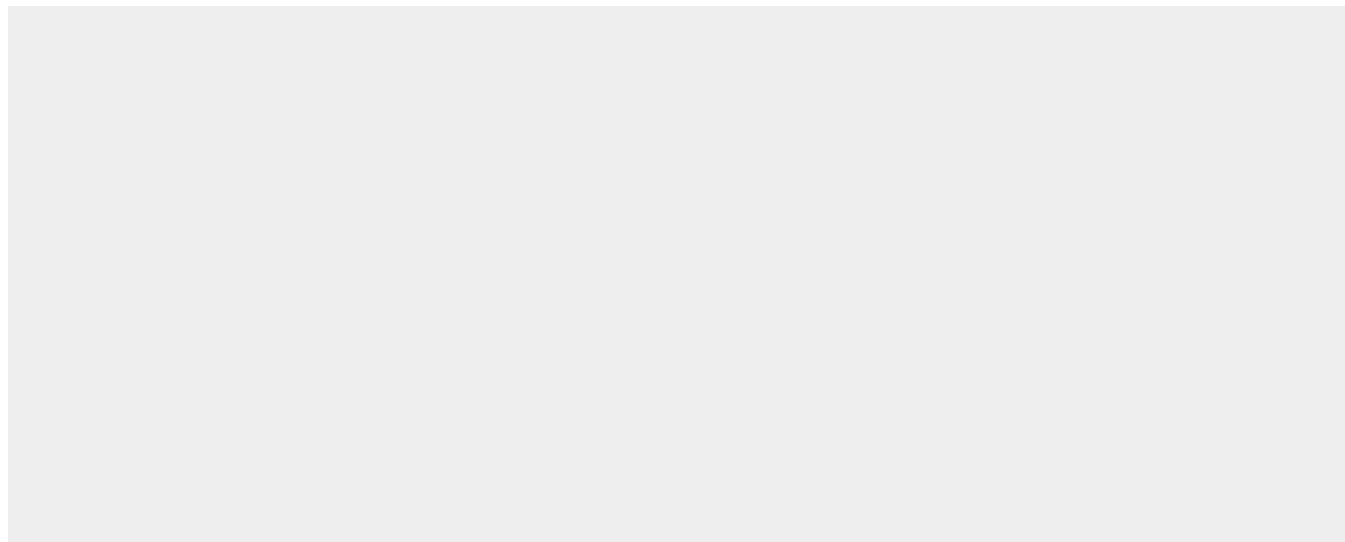
**Tissue Location**

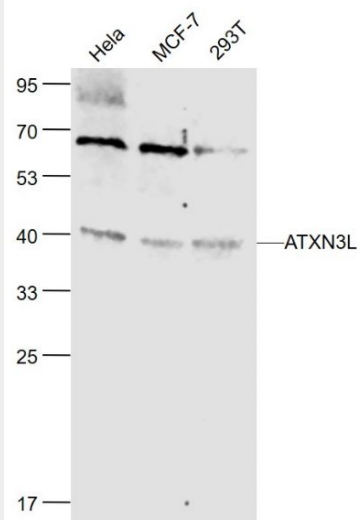
Widely expressed..

**ATXN3L Polyclonal Antibody - Protocols**

Provided below are standard protocols that you may find useful for product applications.

- [Western Blot](#)
- [Blocking Peptides](#)
- [Dot Blot](#)
- [Immunohistochemistry](#)
- [Immunofluorescence](#)
- [Immunoprecipitation](#)
- [Flow Cytometry](#)
- [Cell Culture](#)

**ATXN3L Polyclonal Antibody - Images**



**Sample:**

HeLa(Human) Cell Lysate at 30 ug

MCF-7(Human) Cell Lysate at 30 ug

293T(Human) Cell Lysate at 30 ug

Primary: Anti-ATXN3L (bs-4807R) at 1/1000 dilution

Secondary: IRDye800CW Goat Anti-Rabbit IgG at 1/20000 dilution

Predicted band size: 41 kD

Observed band size: 41 kD