

Endomucin Polyclonal Antibody
Purified Rabbit Polyclonal Antibody (Pab)
Catalog # AP58247**Specification**

Endomucin Polyclonal Antibody - Product Information

Application	WB, IHC-F, IF, E
Primary Accession	O9ULC0
Host	Rabbit
Clonality	Polyclonal
Calculated MW	25 KDa
Physical State	Liquid
Immunogen	KLH conjugated synthetic peptide derived from human Endomucin
Epitope Specificity	21-120/261
Isotype	IgG
Purity	
affinity purified by Protein A	
Buffer	0.01M TBS (pH7.4) with 1% BSA, 0.02% Proclin300 and 50% Glycerol.
SUBCELLULAR LOCATION	Isoform 1: Cell membrane; Single-pass type I membrane protein. Membrane; Single-pass type I membrane protein. Note=Consistently localized to the plasma membrane and less abundantly to Golgi-like perinuclear stacks.Isoform 2: Secreted (Potential). Highly O-glycosylated. Sialic acid-rich glycoprotein.
Post-translational modifications	
Important Note	This product as supplied is intended for research use only, not for use in human, therapeutic or diagnostic applications.

Background Descriptions

Endothelial sialomucin, also called endomucin or mucin-like sialoglycoprotein, which interferes with the assembly of focal adhesion complexes and inhibits interaction between cells and the extracellular matrix.

Endomucin Polyclonal Antibody - Additional Information

Gene ID 51705

Other Names

Endomucin, Endomucin-2, Gastric cancer antigen Ga34, Mucin-14, MUC-14, EMCN, EMCN2, MUC14

Target/Specificity

Expressed in heart, kidney and lung.

Dilution

WB~~1:1000<br \>IHC-F~~N/A<br \>IF~~1:50~200<br \>E~~N/A

Format

0.01M TBS(pH7.4), 0.09% (W/V) sodium azide and 50% Glyce

Storage

Store at -20 °C for one year. Avoid repeated freeze/thaw cycles. When reconstituted in sterile pH 7.4 0.01M PBS or diluent of antibody the antibody is stable for at least two weeks at 2-4 °C.

Endomucin Polyclonal Antibody - Protein Information

Name EMCN

Synonyms EMCN2, MUC14

Function

Endothelial sialomucin, also called endomucin or mucin-like sialoglycoprotein, which interferes with the assembly of focal adhesion complexes and inhibits interaction between cells and the extracellular matrix.

Cellular Location

[Isoform 1]: Cell membrane; Single-pass type I membrane protein. Membrane; Single-pass type I membrane protein Note=Consistently localized to the plasma membrane and less abundantly to Golgi-like perinuclear stacks

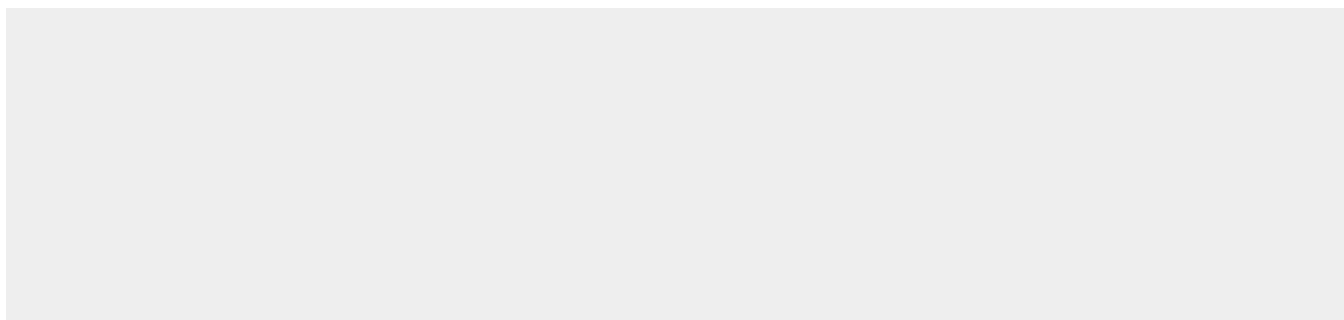
Tissue Location

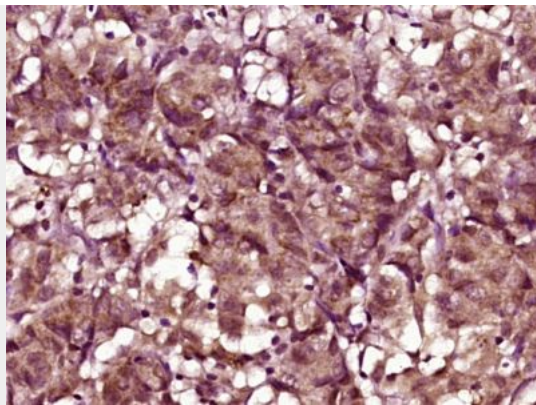
Expressed in heart, kidney and lung.

Endomucin Polyclonal Antibody - Protocols

Provided below are standard protocols that you may find useful for product applications.

- [Western Blot](#)
- [Blocking Peptides](#)
- [Dot Blot](#)
- [Immunohistochemistry](#)
- [Immunofluorescence](#)
- [Immunoprecipitation](#)
- [Flow Cytometry](#)
- [Cell Culture](#)

Endomucin Polyclonal Antibody - Images



Paraformaldehyde-fixed, paraffin embedded (human colon carcinoma); Antigen retrieval by boiling in sodium citrate buffer (pH6.0) for 15min; Block endogenous peroxidase by 3% hydrogen peroxide for 20 minutes; Blocking buffer (normal goat serum) at 37°C for 30min; Antibody incubation with (Endomucin) Polyclonal Antibody, Unconjugated (bs-4808R) at 1:400 overnight at 4°C, followed by operating according to SP Kit(Rabbit) (sp-0023) instructions and DAB staining.