

**SETBP1 Polyclonal Antibody**  
**Purified Rabbit Polyclonal Antibody (Pab)**  
**Catalog # AP58253****Specification****SETBP1 Polyclonal Antibody - Product Information**

Application	IHC-P, IHC-F, IF, E
Primary Accession	<a href="#">Q9Y6X0</a>
Reactivity	Rat, Pig, Dog, Bovine
Host	Rabbit
Clonality	Polyclonal
Calculated MW	176 KDa
Physical State	Liquid
Immunogen	KLH conjugated synthetic peptide derived from human SETBP1
Epitope Specificity	501-600/1596
Isotype	IgG
<b>Purity</b>	
affinity purified by Protein A	
Buffer	0.01M TBS (pH7.4) with 1% BSA, 0.02% Proclin300 and 50% Glycerol.
SUBCELLULAR LOCATION	Nucleus.
SIMILARITY	Contains 3 A.T hook DNA-binding domains.
SUBUNIT	Interacts with SET.
DISEASE	Defects in SETBP1 are the cause of Schinzel-Giedion midface retraction syndrome (SGMFS) [MIM:269150]. It is a disorder characterized by severe mental retardation, distinctive facial features, and multiple congenital malformations, including skeletal abnormalities, genitourinary and renal malformations, cardiac defects, as well as a higher-than-normal prevalence of tumors, notably neuroepithelial neoplasia.
Important Note	This product as supplied is intended for research use only, not for use in human, therapeutic or diagnostic applications.

**Background Descriptions**

SETBP1 (SET binding protein 1), also known as SEB, is a 1,542 amino acid nuclear protein that contains three AT hook DNA-binding domains, one SKI homology region and a C-terminal SET-binding domain, which is followed by three PPLPPPPP repeats. SETBP1 may be involved in SET-related tumorigenesis and leukemogenesis by regulating the transforming activity of SKI in the nucleus or suppressing SET function. As a widely expressed protein, SETBP1 is encoded by a gene that maps to human chromosome 18, which houses over 300 protein-coding genes and contains nearly 76 million bases. There are a variety of diseases associated with defects in chromosome 18-localized genes, some of which include Trisomy 18 (also known as Edwards syndrome), Niemann-Pick disease, hereditary hemorrhagic telangiectasia, erythropoietic protoporphyria and follicular lymphomas.

## SETBP1 Polyclonal Antibody - Additional Information

**Gene ID** 26040

### Other Names

SET-binding protein, SEB, SETBP1, KIAA0437

### Target/Specificity

Expressed in numerous tissues.

### Dilution

IHC-P ~ N/A  
IHC-F ~ N/A  
IF ~ 1:50 ~ 200  
E ~ N/A

### Format

0.01M TBS(pH7.4), 0.09% (W/V) sodium azide and 50% Glyce

### Storage

Store at -20 °C for one year. Avoid repeated freeze/thaw cycles. When reconstituted in sterile pH 7.4 0.01M PBS or diluent of antibody the antibody is stable for at least two weeks at 2-4 °C.

## SETBP1 Polyclonal Antibody - Protein Information

**Name** SETBP1

**Synonyms** KIAA0437

### Cellular Location

Nucleus.

### Tissue Location

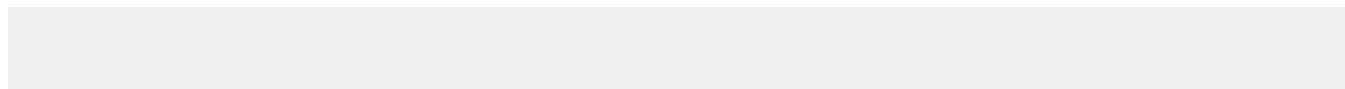
Expressed in numerous tissues. Expressed at low levels in myeloid and monocytic cells as well as in CD34+ cells; expression levels are higher in myeloid malignancies

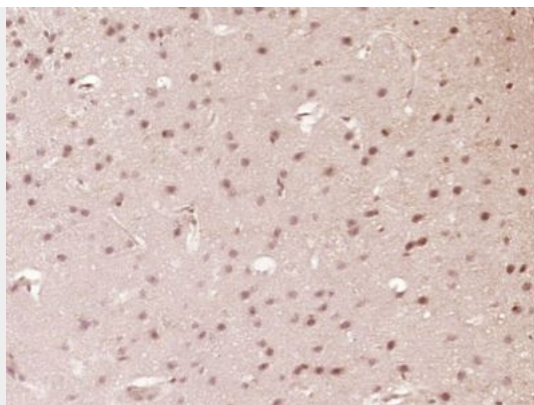
## SETBP1 Polyclonal Antibody - Protocols

Provided below are standard protocols that you may find useful for product applications.

- [Western Blot](#)
- [Blocking Peptides](#)
- [Dot Blot](#)
- [Immunohistochemistry](#)
- [Immunofluorescence](#)
- [Immunoprecipitation](#)
- [Flow Cytometry](#)
- [Cell Culture](#)

## SETBP1 Polyclonal Antibody - Images





Paraformaldehyde-fixed, paraffin embedded (Mouse brain); Antigen retrieval by boiling in sodium citrate buffer (pH6.0) for 15min; Block endogenous peroxidase by 3% hydrogen peroxide for 20 minutes; Blocking buffer (normal goat serum) at 37°C for 30min; Antibody incubation with (SETBP1) Polyclonal Antibody, Unconjugated (bs-4944R) at 1:400 overnight at 4°C, followed by operating according to SP Kit(Rabbit) (sp-0023) instructions and DAB staining.