

COL4A3BP Polyclonal Antibody
Purified Rabbit Polyclonal Antibody (Pab)
Catalog # AP58267**Specification**

COL4A3BP Polyclonal Antibody - Product Information

Application	WB, IHC-P, IHC-F, IF, E
Primary Accession	Q9Y5P4
Reactivity	Rat, Bovine
Host	Rabbit
Clonality	Polyclonal
Calculated MW	71 KDa
Physical State	Liquid
Immunogen	KLH conjugated synthetic peptide derived from human COL4A3BP
Epitope Specificity	551-624/624
Isotype	IgG
Purity	
affinity purified by Protein A	
Buffer	0.01M TBS (pH7.4) with 1% BSA, 0.02% Proclin300 and 50% Glycerol.
SUBCELLULAR LOCATION	Cytoplasm. Golgi apparatus. Endoplasmic reticulum.
SIMILARITY	Contains 1 PH domain. Contains 1 START domain.
SUBUNIT	Interacts with COL4A3. Interacts with VAPA and VAPB. Interaction with VAPB is less efficient than with VAPA.
Post-translational modifications	Phosphorylation on Ser-132 decreases the affinity toward phosphatidylinositol 4-phosphate at Golgi membranes and reduces ceramide transfer activity. Inactivated by hyperphosphorylation of serine residues by CSNK1G2/CK1 that triggers dissociation from the Golgi complex, thus down-regulating ER-to-Golgi transport of ceramide and sphingomyelin synthesis.
Important Note	This product as supplied is intended for research use only, not for use in human, therapeutic or diagnostic applications.

Background Descriptions

COL4A3BP is a kinase that specifically phosphorylates the N terminal region of the non collagenous domain of the alpha 3 chain of type IV collagen, known as the Goodpasture antigen. Goodpasture disease is the result of an autoimmune response directed at this antigen. One isoform of this protein is also involved in ceramide intracellular transport. Two transcripts exist for this gene.

COL4A3BP Polyclonal Antibody - Additional Information

Gene ID 10087**Other Names**

Ceramide transfer protein {ECO:0000303|PubMed:14685229, ECO:0000305}, hCERT, Collagen type IV alpha-3-binding protein, Goodpasture antigen-binding protein, GPBP, START domain-containing protein 11, StARD11, StAR-related lipid transfer protein 11, CERT1 ([HGNC:2205](http://www.genenames.org/cgi-bin/gene_symbol_report?hgnc_id=2205))

Target/Specificity

Widely expressed.

Dilution

WB~~1:1000
IHC-P~~N/A
IHC-F~~N/A
IF~~1:50~200
E~~N/A

Format

0.01M TBS(pH7.4), 0.09% (W/V) sodium azide and 50% Glyce

Storage

Store at -20 °C for one year. Avoid repeated freeze/thaw cycles. When reconstituted in sterile pH 7.4 0.01M PBS or diluent of antibody the antibody is stable for at least two weeks at 2-4 °C.

COL4A3BP Polyclonal Antibody - Protein Information

Name CERT1 ([HGNC:2205](#))

Function

Shelters ceramides and diacylglycerol lipids inside its START domain and mediates the intracellular trafficking of ceramides and diacylglycerol lipids in a non-vesicular manner.

Cellular Location

Cytoplasm. Golgi apparatus. Endoplasmic reticulum Note=Preferentially localized to the Golgi apparatus

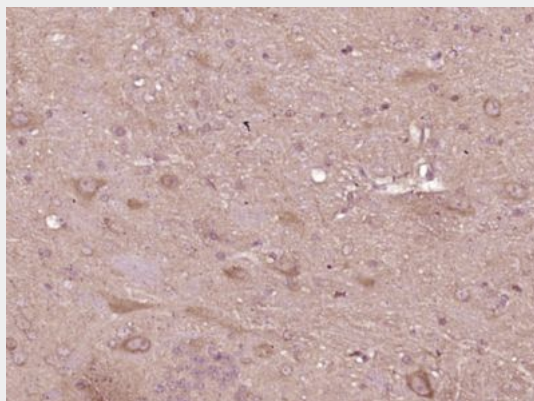
Tissue Location

Widely expressed.

COL4A3BP Polyclonal Antibody - Protocols

Provided below are standard protocols that you may find useful for product applications.

- [Western Blot](#)
- [Blocking Peptides](#)
- [Dot Blot](#)
- [Immunohistochemistry](#)
- [Immunofluorescence](#)
- [Immunoprecipitation](#)
- [Flow Cytometry](#)
- [Cell Culture](#)

COL4A3BP Polyclonal Antibody - Images

Paraformaldehyde-fixed, paraffin embedded (Rat brain); Antigen retrieval by boiling in sodium citrate buffer (pH6.0) for 15min; Block endogenous peroxidase by 3% hydrogen peroxide for 20 minutes; Blocking buffer (normal goat serum) at 37°C for 30min; Antibody incubation with (COL4A3BP) Polyclonal Antibody, Unconjugated (bs-5044R) at 1:400 overnight at 4°C, followed by operating according to SP Kit(Rabbit) (sp-0023) instructions and DAB staining.