

**PTPMT1 Polyclonal Antibody**  
**Purified Rabbit Polyclonal Antibody (Pab)**  
**Catalog # AP58280****Specification**

---

**PTPMT1 Polyclonal Antibody - Product Information**

Application	IHC-P
Primary Accession	<a href="#">Q8WUK0</a>
Reactivity	Rat, Pig, Dog, Bovine
Host	Rabbit
Clonality	Polyclonal
Calculated MW	22844

**PTPMT1 Polyclonal Antibody - Additional Information****Gene ID** 114971**Other Names**

Phosphatidylglycerophosphatase and protein-tyrosine phosphatase 1, 3.1.3.27, PTEN-like phosphatase, Phosphoinositide lipid phosphatase, Protein-tyrosine phosphatase mitochondrial 1, 3.1.3.16, PTPMT1 ([http://www.genenames.org/cgi-bin/gene\\_symbol\\_report?hgnc\\_id=26965](http://www.genenames.org/cgi-bin/gene_symbol_report?hgnc_id=26965)), MOSP, PLIP

**Format**

0.01M TBS(pH7.4), 0.09% (W/V) sodium azide and 50% Glyce

**Storage**

Store at -20 °C for one year. Avoid repeated freeze/thaw cycles. When reconstituted in sterile pH 7.4 0.01M PBS or diluent of antibody the antibody is stable for at least two weeks at 2-4 °C.

**PTPMT1 Polyclonal Antibody - Protein Information****Name** PTPMT1 ([HGNC:26965](#))**Synonyms** MOSP, PLIP**Function**

Lipid phosphatase which dephosphorylates phosphatidylglycerophosphate (PGP) to phosphatidylglycerol (PG) (By similarity). PGP is an essential intermediate in the biosynthetic pathway of cardiolipin, a mitochondrial-specific phospholipid regulating the membrane integrity and activities of the organelle (By similarity). Has also been shown to display phosphatase activity toward phosphoprotein substrates, specifically mediates dephosphorylation of mitochondrial proteins, thereby playing an essential role in ATP production (By similarity). Has probably a preference for proteins phosphorylated on Ser and/or Thr residues compared to proteins phosphorylated on Tyr residues (By similarity). Probably involved in regulation of insulin secretion in pancreatic beta cells (By similarity). May prevent intrinsic apoptosis, probably by regulating mitochondrial membrane integrity (PubMed:<http://www.uniprot.org/citations/24709986>)

target="\_blank">24709986</a>).

#### Cellular Location

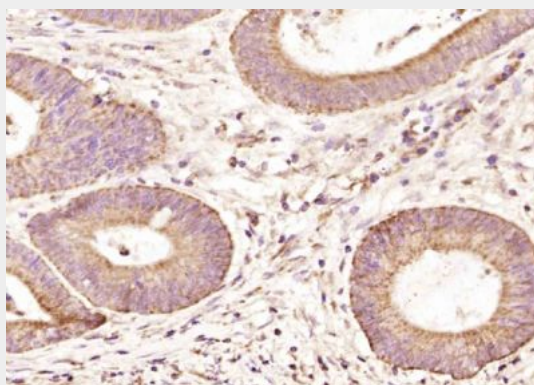
Mitochondrion inner membrane {ECO:0000250|UniProtKB:P0C089}; Peripheral membrane protein {ECO:0000250|UniProtKB:P0C089}; Matrix side {ECO:0000250|UniProtKB:P0C089}

#### PTPMT1 Polyclonal Antibody - Protocols

Provided below are standard protocols that you may find useful for product applications.

- [Western Blot](#)
- [Blocking Peptides](#)
- [Dot Blot](#)
- [Immunohistochemistry](#)
- [Immunofluorescence](#)
- [Immunoprecipitation](#)
- [Flow Cytometry](#)
- [Cell Culture](#)

#### PTPMT1 Polyclonal Antibody - Images



Paraformaldehyde-fixed, paraffin embedded (human colon carcinoma); Antigen retrieval by boiling in sodium citrate buffer (pH6.0) for 15min; Block endogenous peroxidase by 3% hydrogen peroxide for 20 minutes; Blocking buffer (normal goat serum) at 37°C for 30min; Antibody incubation with (PTPMT1) Polyclonal Antibody, Unconjugated (bs-5103R) at 1:400 overnight at 4°C, followed by operating according to SP Kit(Rabbit) (sp-0023) instructions and DAB staining.