

LZTFL1 Polyclonal Antibody
Purified Rabbit Polyclonal Antibody (Pab)
Catalog # AP58287

Specification

LZTFL1 Polyclonal Antibody - Product Information

Application	WB, IHC-P, IHC-F, IF, E
Primary Accession	O9NQ48
Reactivity	Rat, Dog, Bovine
Host	Rabbit
Clonality	Polyclonal
Calculated MW	35 KDa
Physical State	Liquid
Immunogen	KLH conjugated synthetic peptide derived from human LZTFL1
Epitope Specificity	101-200/299
Isotype	IgG
Purity	
affinity purified by Protein A	
Buffer	0.01M TBS (pH7.4) with 1% BSA, 0.02% Proclin300 and 50% Glycerol.
SIMILARITY	Belongs to the LZTFL 1 family.
Important Note	This product as supplied is intended for research use only, not for use in human, therapeutic or diagnostic applications.

Background Descriptions

LZTFL1 (Leucine zipper transcription factor-like 1) contains a leucine zipper pattern and coiled-coil domains.

LZTFL1 Polyclonal Antibody - Additional Information

Gene ID 54585

Other Names

Leucine zipper transcription factor-like protein 1, LZTFL1

Target/Specificity

Expressed in testis, heart, skeletal muscle, pancreas, thymus, spleen, prostate, ovary, small intestine, colon, and peripheral blood leukocytes.

Dilution

WB ~ 1:1000<br \>IHC-P ~ N/A<br \>IHC-F ~ N/A<br \>IF ~ 1:50~200<br \>E ~ N/A

Storage

Store at -20 °C for one year. Avoid repeated freeze/thaw cycles. When reconstituted in sterile pH

7.4 0.01M PBS or diluent of antibody the antibody is stable for at least two weeks at 2-4 °C.

LZTFL1 Polyclonal Antibody - Protein Information

Name LZTFL1

Function

Regulates ciliary localization of the BBSome complex. Together with the BBSome complex, controls SMO ciliary trafficking and contributes to the sonic hedgehog (SHH) pathway regulation. May play a role in neurite outgrowth. May have tumor suppressor function.

Cellular Location

Cytoplasm

Tissue Location

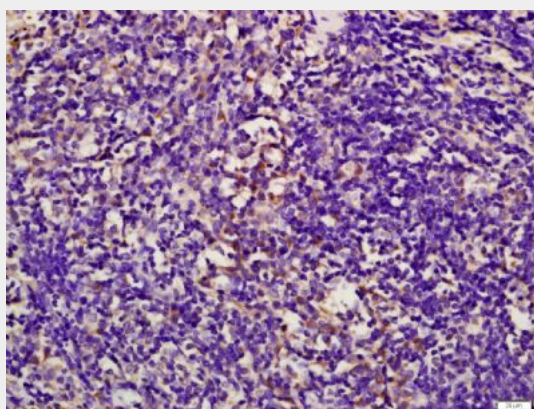
Expressed in prostate, ovary, stomach, pancreas, esophagus, breast, liver, bladder, kidney, thyroid, colon and lung (at protein level). Down-regulated in multiple primary tumors (at protein level). Detected in testis, heart, skeletal muscle, thymus, spleen, small intestine, and peripheral blood leukocytes

LZTFL1 Polyclonal Antibody - Protocols

Provided below are standard protocols that you may find useful for product applications.

- [Western Blot](#)
- [Blocking Peptides](#)
- [Dot Blot](#)
- [Immunohistochemistry](#)
- [Immunofluorescence](#)
- [Immunoprecipitation](#)
- [Flow Cytometry](#)
- [Cell Culture](#)

LZTFL1 Polyclonal Antibody - Images



Tissue/cell: rat spleen tissue; 4% Paraformaldehyde-fixed and paraffin-embedded;

Antigen retrieval: citrate buffer (0.01M, pH 6.0), Boiling bathing for 15min; Block endogenous peroxidase by 3% Hydrogen peroxide for 30min; Blocking buffer (normal goat serum,C-0005) at 37°C for 20 min;

Incubation: Anti-LZTFL1 Polyclonal Antibody, Unconjugated(bs-5138R) 1:200, overnight at 4°C, followed by conjugation to the secondary antibody(SP-0023) and DAB(C-0010) staining