

MYLPF Polyclonal Antibody
Purified Rabbit Polyclonal Antibody (Pab)
Catalog # AP58291**Specification**

MYLPF Polyclonal Antibody - Product Information

Application	WB, IHC-P, IHC-F, IF, E
Primary Accession	Q96A32
Reactivity	Rat, Pig, Dog, Bovine
Host	Rabbit
Clonality	Polyclonal
Calculated MW	19 KDa
Physical State	Liquid
Immunogen	KLH conjugated synthetic peptide derived from human Fast skeletal myosin light chain 2
Epitope Specificity	101-170/170
Isotype	IgG
Purity	
affinity purified by Protein A	
Buffer	0.01M TBS (pH7.4) with 1% BSA, 0.02% Proclin300 and 50% Glycerol.
SIMILARITY	Contains 3 EF-hand domains.
SUBUNIT	Myosin is a hexamer of 2 heavy chains and 4 light chains.
Important Note	This product as supplied is intended for research use only, not for use in human, therapeutic or diagnostic applications.

Background Descriptions

MYLPF is a 169 amino acid protein that is expressed in fetal and adult skeletal muscle. A calicium binding protein, MYLPF contains three EF hand domains and is encoded by a gene that maps to human chromosome 16p11.2. Chromosome 16 encodes over 900 genes in approximately 90 million base pairs, makes up nearly 3% of human cellular DNA and is associated with a variety of genetic disorders. The GAN gene is located on chromosome 16 and, with mutation, may lead to giant axonal neuropathy, a nervous system disorder characterized by increasing malfunction with growth. The rare disorder Rubinstein-Taybi syndrome is also associated with chromosome 16, though through the CREBBP gene which encodes a critical CREB binding protein. Signs of Rubinstein-Taybi include mental retardation and predisposition to tumor growth and white blood cell neoplasias. Crohn's disease is a gastrointestinal inflammatory condition associated with chromosome 16 through the NOD2 gene.

MYLPF Polyclonal Antibody - Additional Information**Gene ID** 29895**Other Names**

Myosin regulatory light chain 2, skeletal muscle isoform, Fast skeletal myosin light chain 2, MLC2B, MYLPF {ECO:0000250|UniProtKB:P97457}

Target/Specificity

Expressed in fetal and adult skeletal muscle.

Dilution

WB~~1:1000<br \>IHC-P~~N/A<br \>IHC-F~~N/A<br \>IF~~1:50~200<br \>E~~N/A

Format

0.01M TBS(pH7.4), 0.09% (W/V) sodium azide and 50% Glyce

Storage

Store at -20 °C for one year. Avoid repeated freeze/thaw cycles. When reconstituted in sterile pH 7.4 0.01M PBS or diluent of antibody the antibody is stable for at least two weeks at 2-4 °C.

MYLPF Polyclonal Antibody - Protein Information

Name MYL11 ([HGNC:29824](#))

Function

Myosin regulatory subunit that plays an essential role to maintain muscle integrity during early development (By similarity). Plays a role in muscle contraction (By similarity).

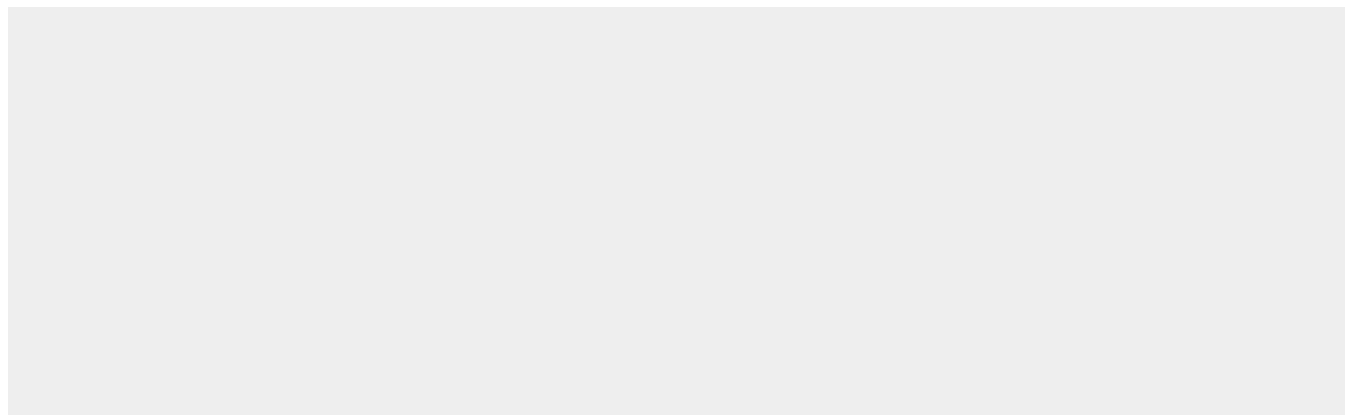
Tissue Location

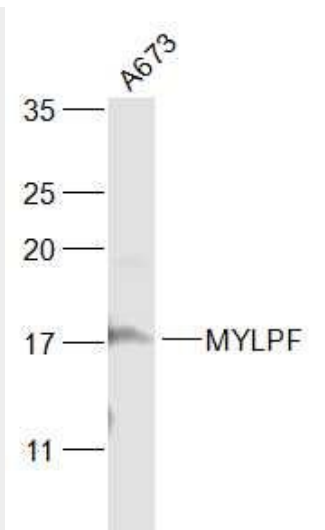
Expressed in fetal and adult skeletal muscle.

MYLPF Polyclonal Antibody - Protocols

Provided below are standard protocols that you may find useful for product applications.

- [Western Blot](#)
- [Blocking Peptides](#)
- [Dot Blot](#)
- [Immunohistochemistry](#)
- [Immunofluorescence](#)
- [Immunoprecipitation](#)
- [Flow Cytometry](#)
- [Cell Culture](#)

MYLPF Polyclonal Antibody - Images

**Sample:**

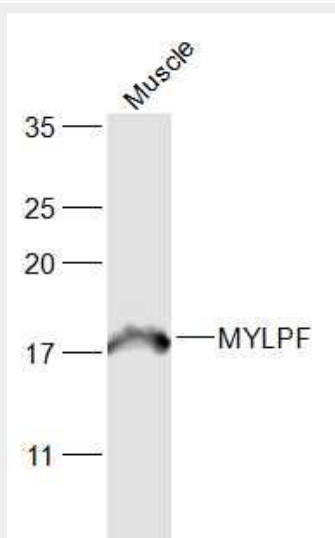
A673(Human) Cell Lysate at 30 ug

Primary: Anti-MYLPF (bs-5159R) at 1/1000 dilution

Secondary: IRDye800CW Goat Anti-Rabbit IgG at 1/20000 dilution

Predicted band size: 19 kD

Observed band size: 19 kD

**Sample:**

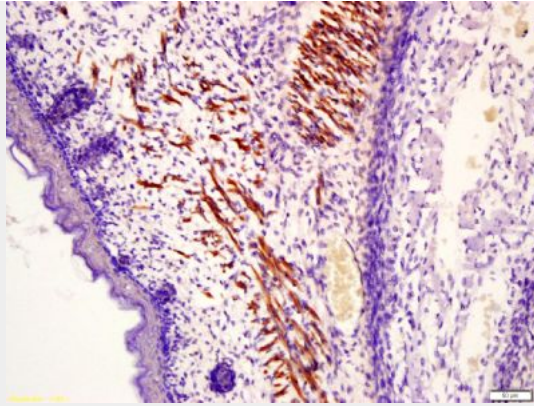
Muscle (Mouse) Lysate at 40 ug

Primary: Anti-MYLPF (bs-5159R) at 1/1000 dilution

Secondary: IRDye800CW Goat Anti-Rabbit IgG at 1/20000 dilution

Predicted band size: 19 kD

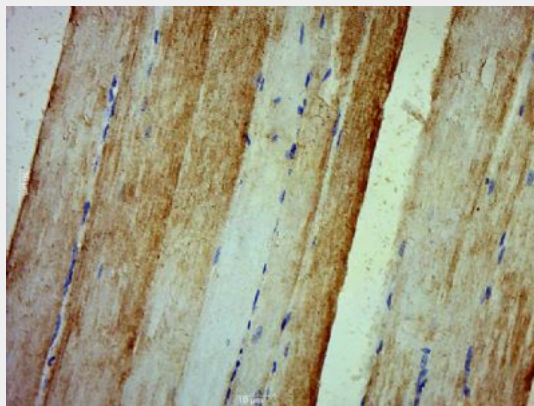
Observed band size: 19 kD



Tissue/cell: muscle of mouse embryo; 4% Paraformaldehyde-fixed and paraffin-embedded;

Antigen retrieval: citrate buffer (0.01M, pH 6.0), Boiling bathing for 15min; Block endogenous peroxidase by 3% Hydrogen peroxide for 30min; Blocking buffer (normal goat serum,C-0005) at 37°C for 20 min;

Incubation: Anti-Fast skeletal Myosin Polyclonal Antibody, Unconjugated(bs-5159R) 1:200, overnight at 4°C, followed by conjugation to the secondary antibody(SP-0023) and DAB(C-0010) staining



Paraformaldehyde-fixed, paraffin embedded (Rat skeletal muscle); Antigen retrieval by boiling in sodium citrate buffer (pH6.0) for 15min; Block endogenous peroxidase by 3% hydrogen peroxide for 20 minutes; Blocking buffer (normal goat serum) at 37°C for 30min; Antibody incubation with (MYLPF) Polyclonal Antibody, Unconjugated (bs-5159R) at 1:500 overnight at 4°C, followed by a conjugated secondary (sp-0023) for 20 minutes and DAB staining.