

MBNL3 Polyclonal Antibody
Purified Rabbit Polyclonal Antibody (Pab)
Catalog # AP58300**Specification****MBNL3 Polyclonal Antibody - Product Information**

Application	WB, IHC-P, IHC-F, IF, E
Primary Accession	O9NUK0
Reactivity	Rat, Pig, Bovine
Host	Rabbit
Clonality	Polyclonal
Calculated MW	39 KDa
Physical State	Liquid
Immunogen	KLH conjugated synthetic peptide derived from human MBNL3
Epitope Specificity	251-354/354
Isotype	IgG
Purity	
affinity purified by Protein A	
Buffer	0.01M TBS (pH7.4) with 1% BSA, 0.02% Proclin300 and 50% Glycerol.
SUBCELLULAR LOCATION	Nucleus. Cytoplasm. Note=Greater concentration in the nucleus. In both DM1 and DM2 patients, colocalizes with nuclear foci of retained expanded-repeat transcripts.
SIMILARITY	Belongs to the muscleblind family. Contains 4 C3H1-type zinc fingers.
Important Note	This product as supplied is intended for research use only, not for use in human, therapeutic or diagnostic applications.

Background Descriptions

MBNL3 has been shown to inhibit muscle differentiation. MBNL3 belongs to a highly conserved family of tissue-specific alternative splicing regulators. This family is known to regulate terminal muscle differentiation through alternative splicing control and several groups have suggested that the family participates in the differentiation of photoreceptors, neurons, adipocytes and blood cell types. MBNL3 is expressed in myoblasts, muscle precursor cells, and during the early stages of myogenesis, but is detected at very low levels in terminally differentiated myotubes. MBNL proteins have been shown to sequester foci of expanded-repeat transcripts and are thought to therefore play a role in the molecular pathology of a group of neuromuscular diseases including the Myotonic Dystrophies.

MBNL3 Polyclonal Antibody - Additional Information**Gene ID** 55796**Other Names**

Muscleblind-like protein 3, Cys3His CCG1-required protein, Muscleblind-like X-linked protein,

Protein HCHCR, MBNL3, CHCR, MBLX39, MBXL

Target/Specificity

Highly expressed in the placenta.

Dilution

WB~~1:1000<br \>IHC-P~~N/A<br \>IHC-F~~N/A<br \>IF~~1:50~200<br \>E~~N/A

Format

0.01M TBS(pH7.4), 0.09% (W/V) sodium azide and 50% Glyce

Storage

Store at -20 °C for one year. Avoid repeated freeze/thaw cycles. When reconstituted in sterile pH 7.4 0.01M PBS or diluent of antibody the antibody is stable for at least two weeks at 2-4 °C.

MBNL3 Polyclonal Antibody - Protein Information

Name MBNL3

Synonyms CHCR, MBLX39, MBXL

Function

Mediates pre-mRNA alternative splicing regulation. Acts either as activator or repressor of splicing on specific pre-mRNA targets. Inhibits cardiac troponin-T (TNNT2) pre-mRNA exon inclusion but induces insulin receptor (IR) pre-mRNA exon inclusion in muscle. Antagonizes the alternative splicing activity pattern of CELF proteins. May play a role in myotonic dystrophy pathophysiology (DM). Could inhibit terminal muscle differentiation, acting at approximately the time of myogenin induction.

Cellular Location

Nucleus. Cytoplasm. Note=Greater concentration in the nucleus. In both DM1 and DM2 patients, colocalizes with nuclear foci of retained expanded-repeat transcripts

Tissue Location

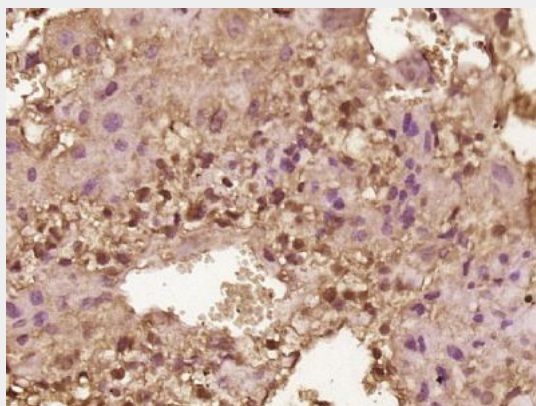
Highly expressed in the placenta.

MBNL3 Polyclonal Antibody - Protocols

Provided below are standard protocols that you may find useful for product applications.

- [Western Blot](#)
- [Blocking Peptides](#)
- [Dot Blot](#)
- [Immunohistochemistry](#)
- [Immunofluorescence](#)
- [Immunoprecipitation](#)
- [Flow Cytometry](#)
- [Cell Culture](#)

MBNL3 Polyclonal Antibody - Images



Paraformaldehyde-fixed, paraffin embedded (Mouse placenta); Antigen retrieval by boiling in sodium citrate buffer (pH6.0) for 15min; Block endogenous peroxidase by 3% hydrogen peroxide for 20 minutes; Blocking buffer (normal goat serum) at 37°C for 30min; Antibody incubation with (MBNL3) Polyclonal Antibody, Unconjugated (bs-5721R) at 1:500 overnight at 4°C, followed by a conjugated secondary (sp-0023) for 20 minutes and DAB staining.