

TACC2 Polyclonal Antibody
Purified Rabbit Polyclonal Antibody (Pab)
Catalog # AP58302**Specification**

TACC2 Polyclonal Antibody - Product Information

Application	WB, IHC-P, IHC-F, IF, E
Primary Accession	O95359
Reactivity	Rat, Dog, Bovine
Host	Rabbit
Clonality	Polyclonal
Calculated MW	309 KDa
Physical State	Liquid
Immunogen	KLH conjugated synthetic peptide derived from human TACC2
Epitope Specificity	2851-2948/2948
Purity	
affinity purified by Protein A	
Buffer	0.01M TBS (pH7.4) with 1% BSA, 0.02% Proclin300 and 50% Glycerol.
SUBCELLULAR LOCATION	Cytoplasm. Nucleus. Cytoplasm, cytoskeleton, centrosome.
SIMILARITY	Belongs to the TACC family. Contains 1 SPAZ (Ser/Pro-rich AZU-1) domain.
SUBUNIT	Interacts with CCDC100/CEP120 (By similarity). Interacts with microtubules. Interacts with YEATS4, GCN5L2 and PCAF.
Post-translational modifications	Phosphorylated by TTK; which is required for localization in centrosome.
Important Note	This product as supplied is intended for research use only, not for use in human, therapeutic or diagnostic applications.

Background Descriptions

TACC2 is a conserved family of centrosome and microtubule interacting proteins that are implicated in cancer. This gene encodes a protein that concentrates at centrosomes throughout the cell cycle. This gene lies within a chromosomal region associated with tumorigenesis. Expression of this gene is thought to affect the progression of breast tumors. Expression of this gene is also induced by erythropoietin.

TACC2 Polyclonal Antibody - Additional Information**Gene ID** 10579**Other Names**

Transforming acidic coiled-coil-containing protein 2, Anti-Zuai-1, AZU-1, TACC2

Target/Specificity

Strongly expressed in heart, skeletal muscle, brain, prostate, thyroid and trachea.

Dilution

WB~~1:1000<br \>IHC-P~~N/A<br \>IHC-F~~N/A<br \>IF~~1:50~200<br \>E~~N/A

Format

0.01M TBS(pH7.4), 0.09% (W/V) sodium azide and 50% Glyce

Storage

Store at -20 °C for one year. Avoid repeated freeze/thaw cycles. When reconstituted in sterile pH 7.4 0.01M PBS or diluent of antibody the antibody is stable for at least two weeks at 2-4 °C.

TACC2 Polyclonal Antibody - Protein Information**Name** TACC2**Function**

Plays a role in the microtubule-dependent coupling of the nucleus and the centrosome. Involved in the processes that regulate centrosome-mediated interkinetic nuclear migration (INM) of neural progenitors (By similarity). May play a role in organizing centrosomal microtubules. May act as a tumor suppressor protein. May represent a tumor progression marker.

Cellular Location

Cytoplasm. Nucleus. Cytoplasm, cytoskeleton, microtubule organizing center, centrosome

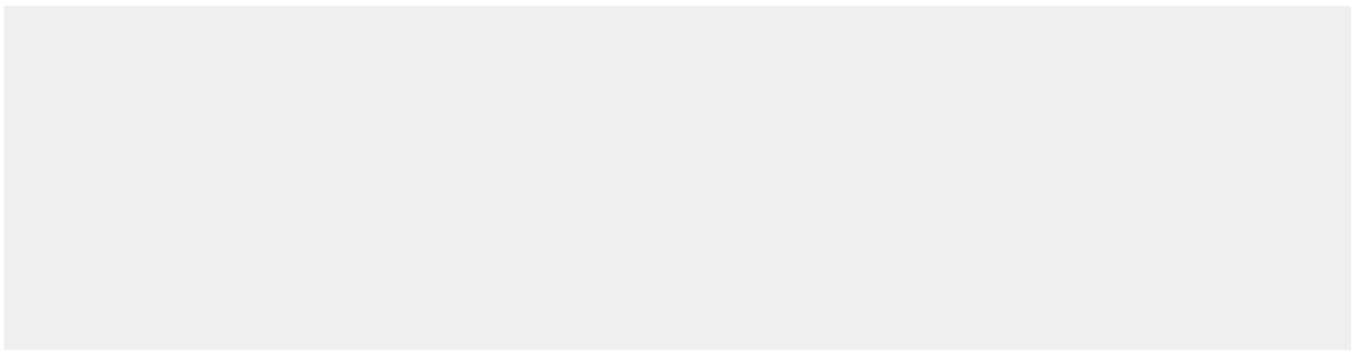
Tissue Location

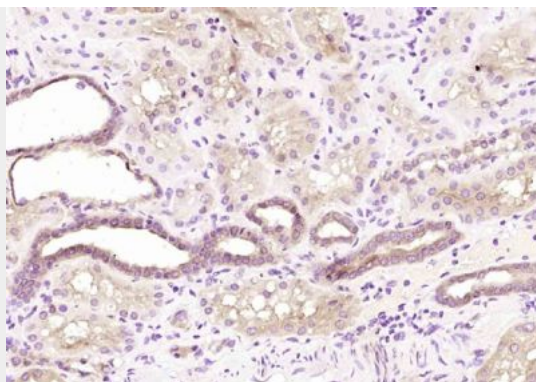
Strongly expressed in heart, skeletal muscle, brain, prostate, thyroid and trachea.

TACC2 Polyclonal Antibody - Protocols

Provided below are standard protocols that you may find useful for product applications.

- [Western Blot](#)
- [Blocking Peptides](#)
- [Dot Blot](#)
- [Immunohistochemistry](#)
- [Immunofluorescence](#)
- [Immunoprecipitation](#)
- [Flow Cytometry](#)
- [Cell Culture](#)

TACC2 Polyclonal Antibody - Images



Paraformaldehyde-fixed, paraffin embedded (Human kidney); Antigen retrieval by boiling in sodium citrate buffer (pH6.0) for 15min; Block endogenous peroxidase by 3% hydrogen peroxide for 20 minutes; Blocking buffer (normal goat serum) at 37°C for 30min; Antibody incubation with (TACC2) Polyclonal Antibody, Unconjugated (bs-5736R) at 1:200 overnight at 4°C, followed by operating according to SP Kit(Rabbit) (sp-0023) instructions and DAB staining.