

DBF4B Polyclonal Antibody
Purified Rabbit Polyclonal Antibody (Pab)
Catalog # AP58303**Specification**

DBF4B Polyclonal Antibody - Product Information

Application	WB, IHC-P, IHC-F, IF, E
Primary Accession	Q8NFT6
Host	Rabbit
Clonality	Polyclonal
Calculated MW	18 KDa
Physical State	Liquid
Immunogen	KLH conjugated synthetic peptide derived from human DBF4B/ASKL1
Epitope Specificity	41-140/615
Isotype	IgG
Purity	
affinity purified by Protein A	
Buffer	0.01M TBS (pH7.4) with 1% BSA, 0.02% Proclin300 and 50% Glycerol.
SUBCELLULAR LOCATION	Nucleus. Note=Predominantly found in soluble fraction but not in the chromatin-bound fraction.
SIMILARITY	Contains 1 BRCT domain. Contains 1 DBF4-type zinc finger.
SUBUNIT	Forms a complex with CDC7. Note that CDC7 forms distinct complex either with DBF4/DBF4A or DBF4B. Such complexes are stable upon replication stress.
Post-translational modifications	Phosphorylated.
Important Note	This product as supplied is intended for research use only, not for use in human, therapeutic or diagnostic applications.

Background Descriptions

DBF4B is a regulatory subunit for CDC7, a serine-threonine kinase which links cell cycle regulation to genome duplication. The complex CDC7-DBF4B selectively phosphorylates the MCM2 subunit at 'Ser-40' and then is involved in regulating the initiation of DNA replication during cell cycle. DBF4B localizes to the nucleus and its expression is cell cycle-regulated.

DBF4B Polyclonal Antibody - Additional Information**Gene ID** 80174**Other Names**

Protein DBF4 homolog B, Activator of S phase kinase-like protein 1, ASK-like protein 1, Chiffon homolog B, Dbf4-related factor 1, DBF4B, ASKL1, DRF1

Target/Specificity

Widely expressed. Highly expressed in testis.

Dilution

WB~~1:1000<br \>IHC-P~~N/A<br \>IHC-F~~N/A<br \>IF~~1:50~200<br \>E~~N/A

Format

0.01M TBS(pH7.4), 0.09% (W/V) sodium azide and 50% Glyce

Storage

Store at -20 °C for one year. Avoid repeated freeze/thaw cycles. When reconstituted in sterile pH 7.4 0.01M PBS or diluent of antibody the antibody is stable for at least two weeks at 2-4 °C.

DBF4B Polyclonal Antibody - Protein Information

Name DBF4B

Synonyms ASKL1, DRF1

Function

Regulatory subunit for CDC7 which activates its kinase activity thereby playing a central role in DNA replication and cell proliferation. Required for progression of S and M phases. The complex CDC7-DBF4B selectively phosphorylates MCM2 subunit at 'Ser-40' and then is involved in regulating the initiation of DNA replication during cell cycle.

Cellular Location

Nucleus. Note=Predominantly found in soluble fraction but not in the chromatin-bound fraction

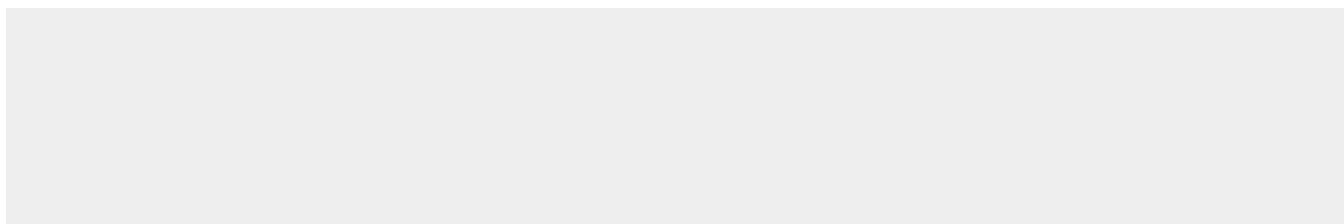
Tissue Location

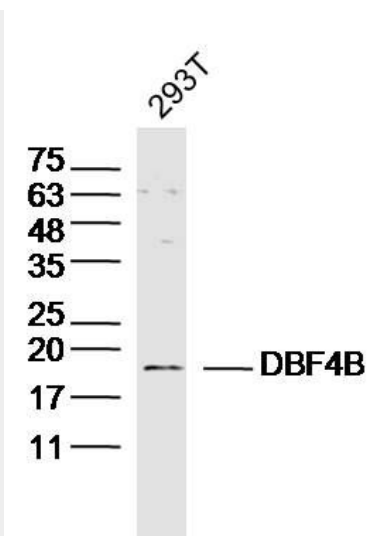
Widely expressed. Highly expressed in testis.

DBF4B Polyclonal Antibody - Protocols

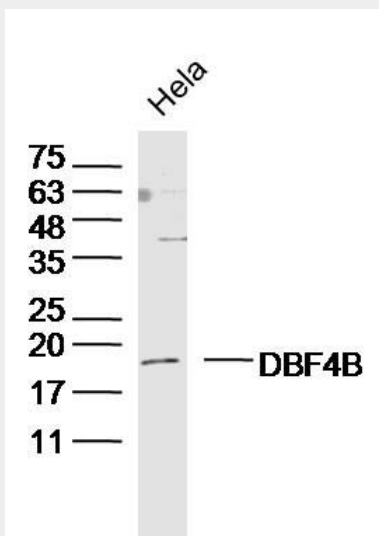
Provided below are standard protocols that you may find useful for product applications.

- [Western Blot](#)
- [Blocking Peptides](#)
- [Dot Blot](#)
- [Immunohistochemistry](#)
- [Immunofluorescence](#)
- [Immunoprecipitation](#)
- [Flow Cytometry](#)
- [Cell Culture](#)

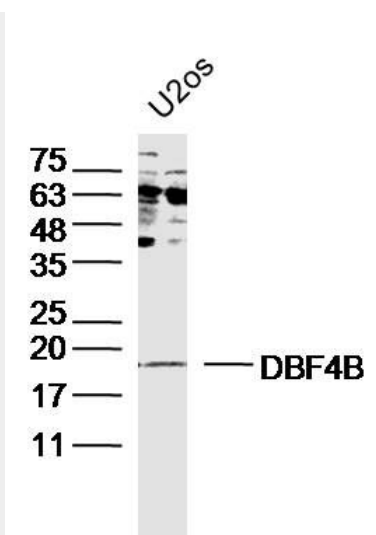
DBF4B Polyclonal Antibody - Images



Sample: 293T Cell (Human) Lysate at 30 ug
Primary: Anti-DBF4B (bs-5748R) at 1/300 dilution
Secondary: IRDye800CW Goat Anti-Rabbit IgG at 1/20000 dilution
Predicted band size: 18kD
Observed band size: 18kD



Sample: HeLa Cell (Human) Lysate at 30 ug
Primary: Anti-DBF4B (bs-5748R) at 1/300 dilution
Secondary: IRDye800CW Goat Anti-Rabbit IgG at 1/20000 dilution
Predicted band size: 18kD
Observed band size: 18kD



Sample: U2os Cell (Human) Lysate at 30 ug
Primary: Anti-DBF4B (bs-5748R) at 1/300 dilution
Secondary: IRDye800CW Goat Anti-Rabbit IgG at 1/20000 dilution
Predicted band size: 18kD
Observed band size: 18kD