

**ESAM Polyclonal Antibody**  
**Purified Rabbit Polyclonal Antibody (Pab)**  
**Catalog # AP58327**

**Specification**

**ESAM Polyclonal Antibody - Product Information**

Application	WB, IHC-P, IHC-F, IF, E
Primary Accession	<a href="#">Q96AP7</a>
Reactivity	Rat
Host	Rabbit
Clonality	Polyclonal
Calculated MW	37-41 KDa
Physical State	Liquid
Immunogen	KLH conjugated synthetic peptide derived from human ESAM
Epitope Specificity	21-120/390
Isotype	IgG
<b>Purity</b>	
affinity purified by Protein A	
Buffer	0.01M TBS (pH7.4) with 1% BSA, 0.02% Proclin300 and 50% Glycerol.
Important Note	This product as supplied is intended for research use only, not for use in human, therapeutic or diagnostic applications.

**Background Descriptions**

Can mediate aggregation most likely through a homophilic molecular interaction.

**ESAM Polyclonal Antibody - Additional Information**

**Gene ID** 90952

**Other Names**

Endothelial cell-selective adhesion molecule, ESAM

**Dilution**

<span class = "dilution\_WB">WB~~1:1000</span><br \><span class = "dilution\_IHC-P">IHC-P~~N/A</span><br \><span class = "dilution\_IHC-F">IHC-F~~N/A</span><br \><span class = "dilution\_IF">IF~~1:50~200</span><br \><span class = "dilution\_E">E~~N/A</span>

**Storage**

Store at -20 °C for one year. Avoid repeated freeze/thaw cycles. When reconstituted in sterile pH 7.4 0.01M PBS or diluent of antibody the antibody is stable for at least two weeks at 2-4 °C.

**ESAM Polyclonal Antibody - Protein Information**

**Name** ESAM**Function**

Can mediate aggregation most likely through a homophilic molecular interaction.

**Cellular Location**

Cell junction, adherens junction {ECO:0000250|UniProtKB:Q925F2}. Cell junction, tight junction {ECO:0000250|UniProtKB:Q925F2}. Cell membrane; Single-pass type I membrane protein {ECO:0000250|UniProtKB:Q925F2}

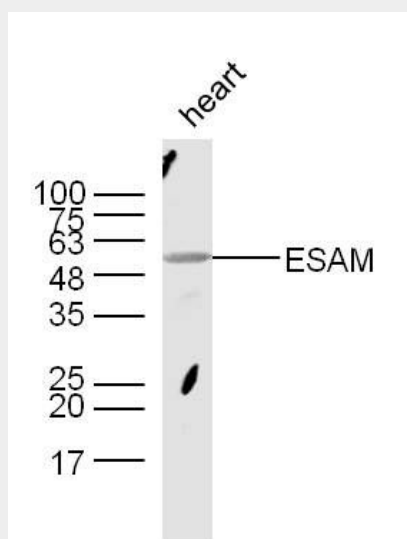
**Tissue Location**

Highly expressed in endothelial cells.

**ESAM Polyclonal Antibody - Protocols**

Provided below are standard protocols that you may find useful for product applications.

- [Western Blot](#)
- [Blocking Peptides](#)
- [Dot Blot](#)
- [Immunohistochemistry](#)
- [Immunofluorescence](#)
- [Immunoprecipitation](#)
- [Flow Cytometry](#)
- [Cell Culture](#)

**ESAM Polyclonal Antibody - Images****Sample:**

heart (Mouse) Lysate at 40 ug

Primary: Anti-ESAM (bs-5838R) at 1/300 dilution

Secondary: IRDye800CW Goat Anti-Rabbit IgG at 1/20000 dilution

Predicted band size: 37/41 kD

Observed band size: 55/48 kD