

**OS9 Polyclonal Antibody**  
**Purified Rabbit Polyclonal Antibody (Pab)**  
**Catalog # AP58344****Specification**

---

**OS9 Polyclonal Antibody - Product Information**

Application	WB, IHC-P, IHC-F, IF, E
Primary Accession	<a href="#">Q13438</a>
Reactivity	Rat, Dog, Bovine
Host	Rabbit
Clonality	Polyclonal
Calculated MW	76 KDa
Physical State	Liquid
Immunogen	KLH conjugated synthetic peptide derived from human OS9
Epitope Specificity	101-200/667
Isotype	IgG
<b>Purity</b>	
affinity purified by Protein A	
Buffer	0.01M TBS (pH7.4) with 1% BSA, 0.02% Proclin300 and 50% Glycerol.
SUBCELLULAR LOCATION	ndoplasmic reticulum lumen.
SIMILARITY	Belongs to the OS-9 family. Contains 1 PRKCSH domain.
SUBUNIT	Probably part of the HRD1 ubiquitin ligase complex composed at least of SYVN1/HRD1 and SEL1L with which it interacts directly. Through this complex it may interact with ERLEC1 and HSPA5. Interacts with DERL2. Interacts with HSP90B1 and CREB3.
Post-translational modifications	Intramolecular disulfide bonds. Isoform 1 and isoform 2 are N-glycosylated.
Important Note	This product as supplied is intended for research use only, not for use in human, therapeutic or diagnostic applications.

**Background Descriptions**

Lectin which functions in endoplasmic reticulum (ER) quality control and ER-associated degradation (ERAD). May bind terminally misfolded non-glycosylated proteins as well as improperly folded glycoproteins, retain them in the ER, and possibly transfer them to the ubiquitination machinery and promote their degradation. Possible targets include TRPV4.

**OS9 Polyclonal Antibody - Additional Information****Gene ID** 10956**Other Names**

Protein OS-9, Amplified in osteosarcoma 9, OS9

**Target/Specificity**

Ubiquitously expressed. Found as well in all tumor cell lines analyzed, amplified in sarcomas. Highly expressed in osteosarcoma SJSA-1 and rhabdomyosarcoma Rh30 cell lines. Isoform 2 is the major isoform detected in all cell types examined.

**Dilution**

WB~1:1000  
IHC-P~N/A  
IHC-F~N/A  
IF~1:50~200  
E~N/A

**Format**

0.01M TBS(pH7.4), 0.09% (W/V) sodium azide and 50% Glycerol

**Storage**

Store at -20 °C for one year. Avoid repeated freeze/thaw cycles. When reconstituted in sterile pH 7.4 0.01M PBS or diluent of antibody the antibody is stable for at least two weeks at 2-4 °C.

**OS9 Polyclonal Antibody - Protein Information****Name** OS9**Function**

Lectin component of the HRD1 complex, which functions in endoplasmic reticulum (ER) quality control and ER-associated degradation (ERAD) (PubMed:[18264092](http://www.uniprot.org/citations/18264092), PubMed:[18417469](http://www.uniprot.org/citations/18417469), PubMed:[19084021](http://www.uniprot.org/citations/19084021), PubMed:[19346256](http://www.uniprot.org/citations/19346256), PubMed:[21172656](http://www.uniprot.org/citations/21172656), PubMed:[24899641](http://www.uniprot.org/citations/24899641)). Specifically recognizes and binds improperly folded glycoproteins as well as hyperglycosylated proteins, retain them in the ER, and transfers them to the ubiquitination machinery and promote their degradation (PubMed:[18264092](http://www.uniprot.org/citations/18264092), PubMed:[18417469](http://www.uniprot.org/citations/18417469), PubMed:[19084021](http://www.uniprot.org/citations/19084021), PubMed:[19346256](http://www.uniprot.org/citations/19346256), PubMed:[21172656](http://www.uniprot.org/citations/21172656), PubMed:[24899641](http://www.uniprot.org/citations/24899641)). Possible targets include TRPV4 as well as hyperglycosylated HSP90B1 (PubMed:[17932042](http://www.uniprot.org/citations/17932042)).

**Cellular Location**

Endoplasmic reticulum lumen

**Tissue Location**

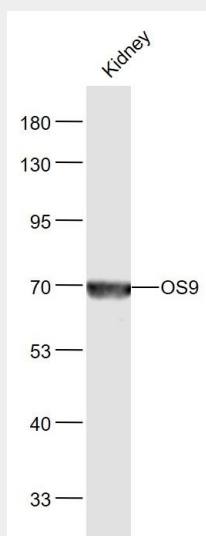
Ubiquitously expressed (PubMed:8634085). Found as well in all tumor cell lines analyzed, amplified in sarcomas (PubMed:8634085). Highly expressed in osteosarcoma SJSA-1 and rhabdomyosarcoma Rh30 cell lines (PubMed:8634085)

**OS9 Polyclonal Antibody - Protocols**

Provided below are standard protocols that you may find useful for product applications.

- [Western Blot](#)
- [Blocking Peptides](#)
- [Dot Blot](#)
- [Immunohistochemistry](#)
- [Immunofluorescence](#)
- [Immunoprecipitation](#)
- [Flow Cytometry](#)
- [Cell Culture](#)

### OS9 Polyclonal Antibody - Images



**Sample:**

Kidney (Mouse) Lysate at 40 ug

Primary: Anti-OS9 (bs-5901CW Goat Anti-Rabbit IgG at 1/20000 dilution

Predicted band size: 76 kD

Observed band size: 70 kD