

MAS1L Polyclonal Antibody
Purified Rabbit Polyclonal Antibody (Pab)
Catalog # AP58347**Specification****MAS1L Polyclonal Antibody - Product Information**

Application	IHC-P, IHC-F, IF, ICC, E
Primary Accession	P35410
Reactivity	Rat
Host	Rabbit
Clonality	Polyclonal
Calculated MW	42 KDa
Physical State	Liquid
Immunogen	KLH conjugated synthetic peptide derived from human MAS1L
Epitope Specificity	201-300/378
Isotype	IgG
Purity	
affinity purified by Protein A	
Buffer	0.01M TBS (pH7.4) with 1% BSA, 0.02% Proclin300 and 50% Glycerol.
SUBCELLULAR LOCATION	Cell membrane; Multi-pass membrane protein.
SIMILARITY	Belongs to the G-protein coupled receptor 1 family. Mas subfamily.
Important Note	This product as supplied is intended for research use only, not for use in human, therapeutic or diagnostic applications.

Background Descriptions

Belongs to the G-protein coupled receptor 1 family. Mas subfamily.

MAS1L Polyclonal Antibody - Additional Information

Gene ID 116511

Other Names

Mas-related G-protein coupled receptor MRG, MAS-R, MAS1-like, MAS1L, MRG

Dilution

IHC-P ~ ~ N/A
IHC-F ~ ~ N/A
IF ~ ~ 1:50 ~ 200
ICC ~ ~ N/A
E ~ ~ N/A

Format

0.01M TBS(pH7.4), 0.09% (W/V) sodium azide and 50% Glyce

Storage

Store at -20 °C for one year. Avoid repeated freeze/thaw cycles. When reconstituted in sterile pH 7.4 0.01M PBS or diluent of antibody the antibody is stable for at least two weeks at 2-4 °C.

MAS1L Polyclonal Antibody - Protein Information

Name MAS1L

Synonyms MRG

Cellular Location

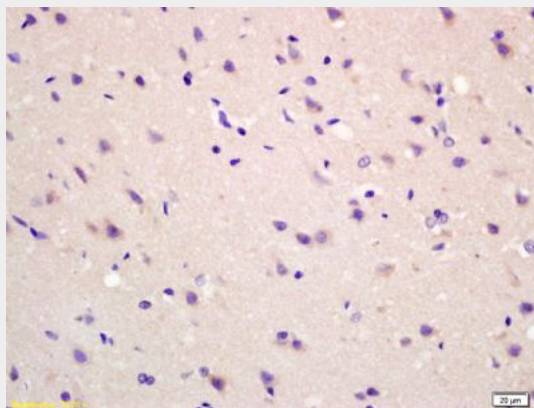
Cell membrane; Multi-pass membrane protein.

MAS1L Polyclonal Antibody - Protocols

Provided below are standard protocols that you may find useful for product applications.

- [Western Blot](#)
- [Blocking Peptides](#)
- [Dot Blot](#)
- [Immunohistochemistry](#)
- [Immunofluorescence](#)
- [Immunoprecipitation](#)
- [Flow Cytometry](#)
- [Cell Culture](#)

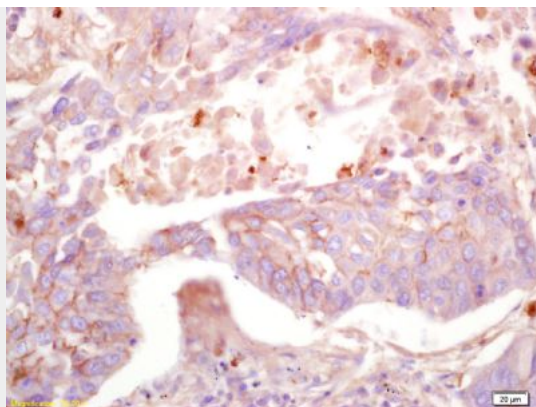
MAS1L Polyclonal Antibody - Images



Tissue/cell: rat brain tissue; 4% Paraformaldehyde-fixed and paraffin-embedded;

Antigen retrieval: citrate buffer (0.01M, pH 6.0), Boiling bathing for 15min; Block endogenous peroxidase by 3% Hydrogen peroxide for 30min; Blocking buffer (normal goat serum,C-0005) at 37°C for 20 min;

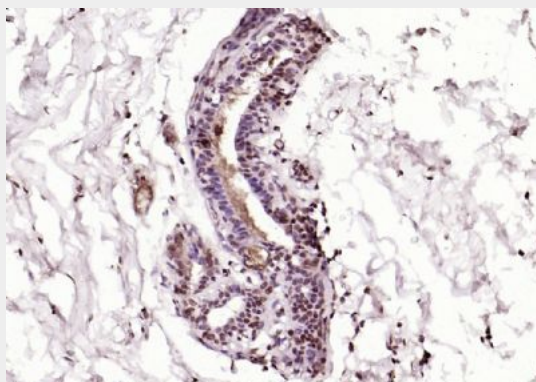
Incubation: Anti-MAS1L Polyclonal Antibody, Unconjugated(bs-5926R) 1:200, overnight at 4°C, followed by conjugation to the secondary antibody(SP-0023) and DAB(C-0010) staining



Tissue/cell: human lung carcinoma; 4% Paraformaldehyde-fixed and paraffin-embedded;

Antigen retrieval: citrate buffer (0.01M, pH 6.0), Boiling bathing for 15min; Block endogenous peroxidase by 3% Hydrogen peroxide for 30min; Blocking buffer (normal goat serum,C-0005) at 37°C for 20 min;

Incubation: Anti-MAS1L Polyclonal Antibody, Unconjugated(bs-5926R) 1:200, overnight at 4°C, followed by conjugation to the secondary antibody(SP-0023) and DAB(C-0010) staining



Paraformaldehyde-fixed, paraffin embedded (human breast carcinoma); Antigen retrieval by boiling in sodium citrate buffer (pH6.0) for 15min; Block endogenous peroxidase by 3% hydrogen peroxide for 20 minutes; Blocking buffer (normal goat serum) at 37°C for 30min; Antibody incubation with (MAS1L) Polyclonal Antibody, Unconjugated (bs-5926R) at 1:200 overnight at 4°C, followed by operating according to SP Kit(Rabbit) (sp-0023) instructions and DAB staining.