

KLHL7 Polyclonal Antibody
Purified Rabbit Polyclonal Antibody (Pab)
Catalog # AP58348**Specification****KLHL7 Polyclonal Antibody - Product Information**

Application	IHC-P, IHC-F, IF, E
Primary Accession	Q8IXQ5
Reactivity	Rat, Pig, Dog, Bovine
Host	Rabbit
Clonality	Polyclonal
Calculated MW	64 KDa
Physical State	Liquid
Immunogen	KLH conjugated synthetic peptide derived from human KLHL7
Epitope Specificity	51-150/856
Isotype	IgG
Purity affinity purified by Protein A	
Buffer	0.01M TBS (pH7.4) with 1% BSA, 0.02% Proclin300 and 50% Glycerol.
SUBCELLULAR LOCATION	Nucleus.
SIMILARITY	Contains 1 BACK (BTB/Kelch associated) domain.Contains 1 BTB (POZ) domain.Contains 6 Kelch repeats.
SUBUNIT	Homodimer. Component of the BCR(KLHL7) E3 ubiquitin ligase complex, at least composed of CUL3 and KLHL7 and RBX1.
DISEASE	Defects in KLHL7 are the cause of retinitis pigmentosa type 42 (RP42) [MIM:612943]. A retinal dystrophy belonging to the group of pigmentary retinopathies. RP is characterized by retinal pigment deposits visible on fundus examination and primary loss of rod photoreceptor cells followed by secondary loss of cone photoreceptors. Patients typically have night vision blindness and loss of midperipheral visual field. As their condition progresses, they lose their far peripheral visual field and eventually central vision as well.
Important Note	This product as supplied is intended for research use only, not for use in human, therapeutic or diagnostic applications.

Background Descriptions

This gene encodes a BTB-Kelch-related protein. The encoded protein may be involved in protein degradation. Mutations in this gene have been associated with retinitis pigmentosa 42. [provided by RefSeq, Feb 2010].

KLHL7 Polyclonal Antibody - Additional Information

Gene ID 55975

Other Names

Kelch-like protein 7, KLHL7

Target/Specificity

Widely expressed, with highest levels in adult and fetal heart, CNS and adult testis.

Dilution

IHC-P ~ N/A
IHC-F ~ N/A
IF ~ 1:50 ~ 200
E ~ N/A

Format

0.01M TBS (pH 7.4), 0.09% (W/V) sodium azide and 50% Glycerol

Storage

Store at -20 °C for one year. Avoid repeated freeze/thaw cycles. When reconstituted in sterile pH 7.4 0.01M PBS or diluent of antibody the antibody is stable for at least two weeks at 2-4 °C.

KLHL7 Polyclonal Antibody - Protein Information

Name KLHL7

Function

Substrate-specific adapter of a BCR (BTB-CUL3-RBX1) E3 ubiquitin ligase complex. The BCR(KLHL7) complex acts by mediating ubiquitination and subsequent degradation of substrate proteins. Probably mediates 'Lys-48'-linked ubiquitination.

Cellular Location

Nucleus. Cytoplasm. Note=Colocalizes with CUL3 in punctate structures at the perinuclear region of the cytoplasm

Tissue Location

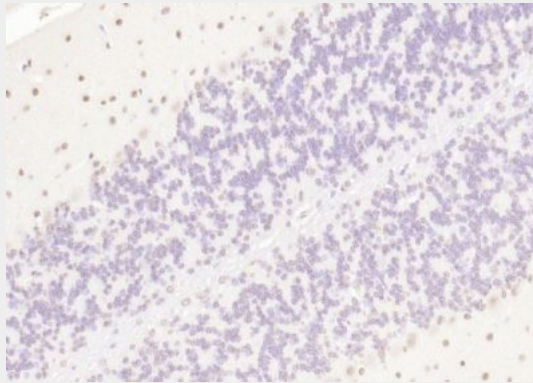
Widely expressed, with highest levels in adult and fetal heart, CNS and adult testis.

KLHL7 Polyclonal Antibody - Protocols

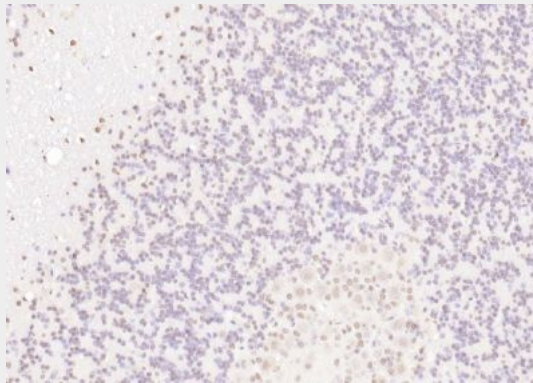
Provided below are standard protocols that you may find useful for product applications.

- [Western Blot](#)
- [Blocking Peptides](#)
- [Dot Blot](#)
- [Immunohistochemistry](#)
- [Immunofluorescence](#)
- [Immunoprecipitation](#)
- [Flow Cytometry](#)
- [Cell Culture](#)

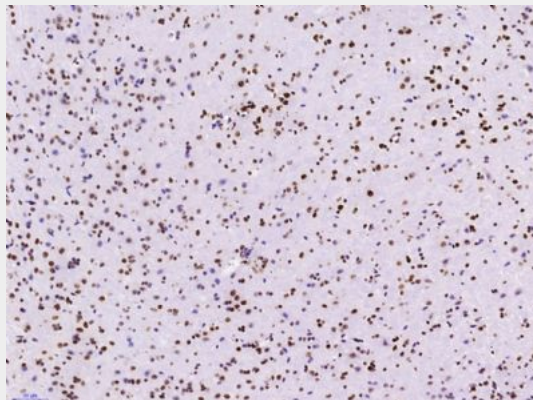
KLHL7 Polyclonal Antibody - Images



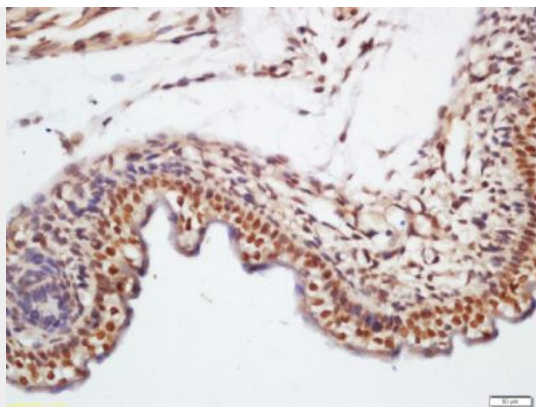
Paraformaldehyde-fixed, paraffin embedded (mouse cerebellum); Antigen retrieval by boiling in sodium citrate buffer (pH6.0) for 15min; Block endogenous peroxidase by 3% hydrogen peroxide for 20 minutes; Blocking buffer (normal goat serum) at 37°C for 30min; Antibody incubation with (KLHL7) Polyclonal Antibody, Unconjugated (bs-5935R) at 1:200 overnight at 4°C, followed by operating according to SP Kit(Rabbit) (sp-0023) instructions and DAB staining.



Paraformaldehyde-fixed, paraffin embedded (rat cerebellum); Antigen retrieval by boiling in sodium citrate buffer (pH6.0) for 15min; Block endogenous peroxidase by 3% hydrogen peroxide for 20 minutes; Blocking buffer (normal goat serum) at 37°C for 30min; Antibody incubation with (KLHL7) Polyclonal Antibody, Unconjugated (bs-5935R) at 1:200 overnight at 4°C, followed by operating according to SP Kit(Rabbit) (sp-0023) instructions and DAB staining.



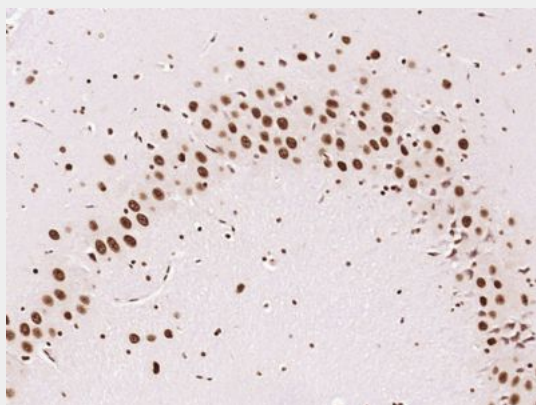
Paraformaldehyde-fixed, paraffin embedded (Mouse brain); Antigen retrieval by boiling in sodium citrate buffer (pH6.0) for 15min; Block endogenous peroxidase by 3% hydrogen peroxide for 20 minutes; Blocking buffer (normal goat serum) at 37°C for 30min; Antibody incubation with (KLHL7) Polyclonal Antibody, Unconjugated (bs-5935R) at 1:400 overnight at 4°C, followed by operating according to SP Kit(Rabbit) (sp-0023) instructions and DAB staining.



Tissue/cell: mouse embryo tissue; 4% Paraformaldehyde-fixed and paraffin-embedded;

Antigen retrieval: citrate buffer (0.01M, pH 6.0), Boiling bathing for 15min; Block endogenous peroxidase by 3% Hydrogen peroxide for 30min; Blocking buffer (normal goat serum,C-0005) at 37°C for 20 min;

Incubation: Anti-KLHL7 Polyclonal Antibody, Unconjugated(bs-5935R) 1:200, overnight at 4°C, followed by conjugation to the secondary antibody(SP-0023) and DAB(C-0010) staining



Paraformaldehyde-fixed, paraffin embedded (Rat brain); Antigen retrieval by boiling in sodium citrate buffer (pH6.0) for 15min; Block endogenous peroxidase by 3% hydrogen peroxide for 20 minutes; Blocking buffer (normal goat serum) at 37°C for 30min; Antibody incubation with (KLHL7) Polyclonal Antibody, Unconjugated (bs-5935R) at 1:400 overnight at 4°C, followed by operating according to SP Kit(Rabbit) (sp-0023) instructions and DAB staining.