

**NARG2 Polyclonal Antibody**  
**Purified Rabbit Polyclonal Antibody (Pab)**  
**Catalog # AP58352****Specification**

---

**NARG2 Polyclonal Antibody - Product Information**

Application	FC, IHC-P, WB
Primary Accession	<a href="#">Q659A1</a>
Reactivity	Rat, Dog
Host	Rabbit
Clonality	Polyclonal
Calculated MW	110011

**NARG2 Polyclonal Antibody - Additional Information****Gene ID** 79664**Other Names**

Little elongation complex subunit 2, Interactor of little elongator complex ELL subunit 2, NMDA receptor-regulated protein 2, ICE2, BRCC1, NARG2

**Format**

0.01M TBS(pH7.4), 0.09% (W/V) sodium azide and 50% Glyce

**Storage**

Store at -20 °C for one year. Avoid repeated freeze/thaw cycles. When reconstituted in sterile pH 7.4 0.01M PBS or diluent of antibody the antibody is stable for at least two weeks at 2-4 °C.

**NARG2 Polyclonal Antibody - Protein Information****Name** ICE2**Synonyms** BRCC1, NARG2**Function**

Component of the little elongation complex (LEC), a complex required to regulate small nuclear RNA (snRNA) gene transcription by RNA polymerase II and III.

**Cellular Location**

Nucleus. Note=Colocalizes with COIL in subnuclear Cajal and histone locus bodies. Translocates in the LEC complex to Cajal and histone locus bodies at snRNA genes in a ICE1-dependent manner. Associates to transcriptionally active chromatin at snRNA genes

**Tissue Location**

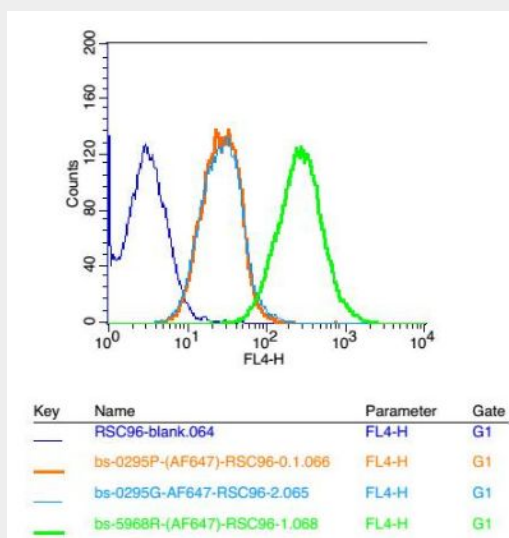
Expressed at low levels in lung and testis.

## NARG2 Polyclonal Antibody - Protocols

Provided below are standard protocols that you may find useful for product applications.

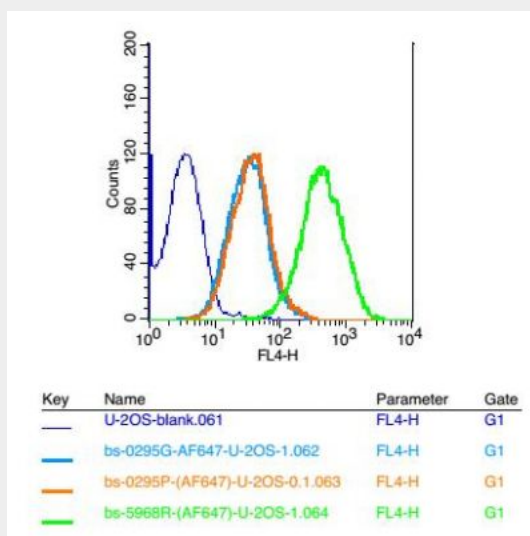
- [Western Blot](#)
- [Blocking Peptides](#)
- [Dot Blot](#)
- [Immunohistochemistry](#)
- [Immunofluorescence](#)
- [Immunoprecipitation](#)
- [Flow Cytometry](#)
- [Cell Culture](#)

## NARG2 Polyclonal Antibody - Images



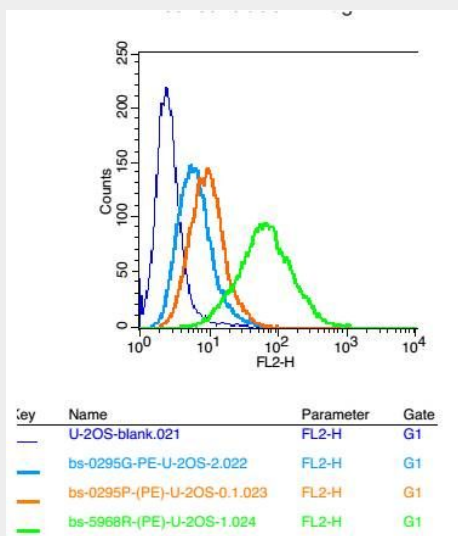
Blank control: RSC96(blue)

Isotype Control Antibody: Rabbit IgG(orange) ; Secondary Antibody: Goat anti-rabbit IgG-AF647(white blue), Dilution: 1:100 in 1 X PBS containing 0.5% BSA ; Primary Antibody Dilution: 1 µl in 100 µL1X PBS containing 0.5% BSA(green).



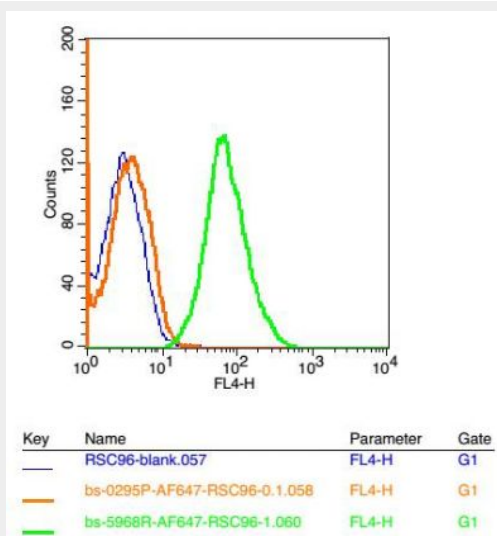
Blank control: U-2OS(blue)

Isotype Control Antibody: Rabbit IgG(orange) ; Secondary Antibody: Goat anti-rabbit IgG-AF647(white blue), Dilution: 1:100 in 1 X PBS containing 0.5% BSA ; Primary Antibody Dilution: 1  $\mu$ l in 100  $\mu$ L1X PBS containing 0.5% BSA(green).



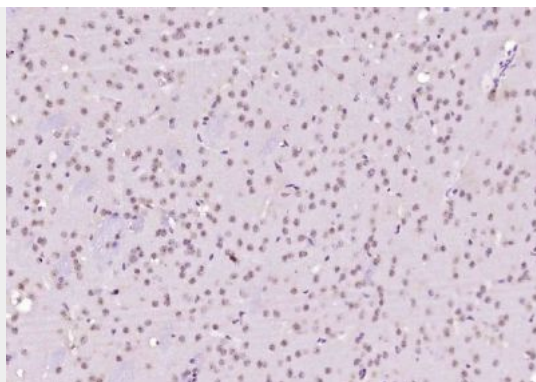
Blank control: U-2OS(blue)

Isotype Control Antibody: Rabbit IgG(orange) ; Secondary Antibody: Goat anti-rabbit IgG-PE(white blue), Dilution: 1:100 in 1 X PBS containing 0.5% BSA ; Primary Antibody Dilution: 1  $\mu$ l in 100  $\mu$ L1X PBS containing 0.5% BSA(green).

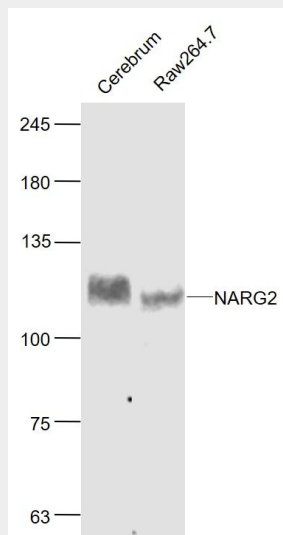


Blank control: HCCLM3(blue)

Isotype Control Antibody: Rabbit IgG-AF647(orange) ; Primary Antibody Dilution: 5  $\mu$ l in 100  $\mu$ L1X PBS containing 0.5% BSA(green).



Paraformaldehyde-fixed, paraffin embedded (mouse brain tissue); Antigen retrieval by boiling in sodium citrate buffer (pH6.0) for 15min; Block endogenous peroxidase by 3% hydrogen peroxide for 20 minutes; Blocking buffer (normal goat serum) at 37°C for 30min; Antibody incubation with (NARG2) Polyclonal Antibody, Unconjugated (bs-5968R) at 1:400 overnight at 4°C, followed by operating according to SP Kit(Rabbit) (sp-0023) instructions and DAB staining.



**Sample:**

Cerebrum (Rat) Lysate at 40 ug

Raw264.7 (Mouse) Cell Lysate at 30 ug

Primary: Anti- NARG2 (bs-5968R) at 1/1000 dilution

Secondary: IRDye800CW Goat Anti-Rabbit IgG at 1/20000 dilution

Predicted band size: 110 kD

Observed band size: 110 kD