

ABI2 Polyclonal Antibody
Purified Rabbit Polyclonal Antibody (Pab)
Catalog # AP58354**Specification**

ABI2 Polyclonal Antibody - Product Information

Application	IHC-P
Primary Accession	Q9NYB9
Reactivity	Rat, Pig, Dog
Host	Rabbit
Clonality	Polyclonal
Calculated MW	55663

ABI2 Polyclonal Antibody - Additional Information**Gene ID** 10152**Other Names**

Abl interactor 2 {ECO:0000303|Ref.16}, Abelson interactor 2 {ECO:0000303|Ref.16}, Abi-2, Abl-binding protein 3, AblBP3, Arg-binding protein 1, ArgBP1, ABI2 {ECO:0000303|PubMed:28397838, ECO:0000312|HGNC:HGNC:24011}

Format

0.01M TBS(pH7.4), 0.09% (W/V) sodium azide and 50% Glyce

Storage

Store at -20 °C for one year. Avoid repeated freeze/thaw cycles. When reconstituted in sterile pH 7.4 0.01M PBS or diluent of antibody the antibody is stable for at least two weeks at 2-4 °C.

ABI2 Polyclonal Antibody - Protein Information**Name** ABI2 {ECO:0000303|PubMed:28397838, ECO:0000312|HGNC:HGNC:24011}**Function**

Regulator of actin cytoskeleton dynamics underlying cell motility and adhesion. Functions as a component of the WAVE complex, which activates actin nucleating machinery Arp2/3 to drive lamellipodia formation (PubMed:21107423). Acts as a regulator and substrate of nonreceptor tyrosine kinases ABL1 and ABL2 involved in processes linked to cell growth and differentiation. Positively regulates ABL1-mediated phosphorylation of ENAH, which is required for proper polymerization of nucleated actin filaments at the leading edge (PubMed:7590236, PubMed:8649853, PubMed:10498863). Contributes to the regulation of actin assembly at the tips of neuron projections. In particular, controls dendritic spine morphogenesis and may promote dendritic spine specification toward large mushroom-type spines known as repositories of memory in the brain (By similarity). In hippocampal neurons, may mediate actin-dependent BDNF-NTRK2 early endocytic trafficking that

triggers dendrite outgrowth (By similarity). Participates in ocular lens morphogenesis, likely by regulating lamellipodia-driven adherens junction formation at the epithelial cell-secondary lens fiber interface (By similarity). Also required for nascent adherens junction assembly in epithelial cells (PubMed: <http://www.uniprot.org/citations/15572692> target="_blank">15572692).

Cellular Location

Cytoplasm. Nucleus

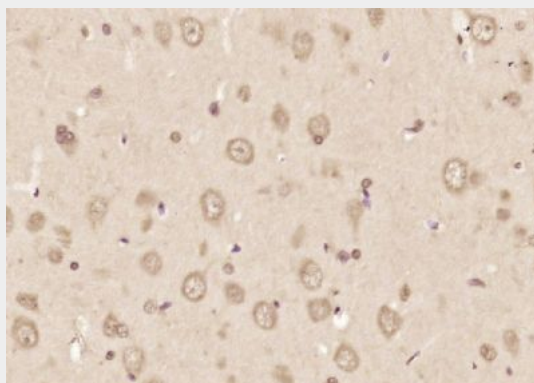
Tissue Location

Widely expressed. Abundant in testes, ovary, thymus, and colon, with lower but detectable levels in prostate, peripheral blood leukocytes, and spleen.

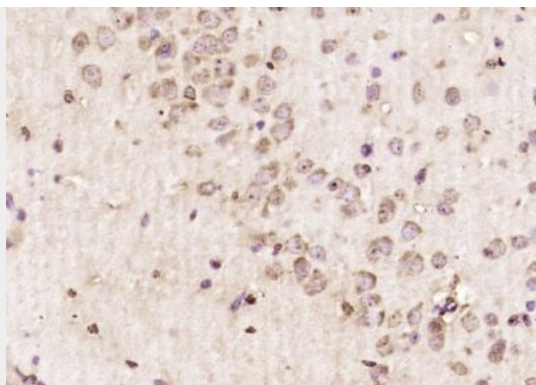
ABI2 Polyclonal Antibody - Protocols

Provided below are standard protocols that you may find useful for product applications.

- [Western Blot](#)
- [Blocking Peptides](#)
- [Dot Blot](#)
- [Immunohistochemistry](#)
- [Immunofluorescence](#)
- [Immunoprecipitation](#)
- [Flow Cytometry](#)
- [Cell Culture](#)

ABI2 Polyclonal Antibody - Images

Paraformaldehyde-fixed, paraffin embedded (rat brain); Antigen retrieval by boiling in sodium citrate buffer (pH6.0) for 15min; Block endogenous peroxidase by 3% hydrogen peroxide for 20 minutes; Blocking buffer (normal goat serum) at 37°C for 30min; Antibody incubation with (ABI2) Polyclonal Antibody, Unconjugated (bs-5984R) at 1:200 overnight at 4°C, followed by operating according to SP Kit(Rabbit) (sp-0023) instructions and DAB staining.



Paraformaldehyde-fixed, paraffin embedded (mouse brain); Antigen retrieval by boiling in sodium citrate buffer (pH6.0) for 15min; Block endogenous peroxidase by 3% hydrogen peroxide for 20 minutes; Blocking buffer (normal goat serum) at 37°C for 30min; Antibody incubation with (ABI2) Polyclonal Antibody, Unconjugated (bs-5984R) at 1:200 overnight at 4°C, followed by operating according to SP Kit(Rabbit) (sp-0023) instructions and DAB staining.