

**SEZ6L Polyclonal Antibody**  
**Purified Rabbit Polyclonal Antibody (Pab)**  
**Catalog # AP58377**

**Specification**

**SEZ6L Polyclonal Antibody - Product Information**

Application	WB, IHC-P, IHC-F, IF, E
Primary Accession	<a href="#">Q9BYH1</a>
Reactivity	Rat, Pig, Dog, Bovine
Host	Rabbit
Clonality	Polyclonal
Calculated MW	109 KDa
Physical State	Liquid
Immunogen	KLH conjugated synthetic peptide derived from human SEZ6L
Epitope Specificity	701-800/1024
Isotype	IgG
<b>Purity</b>	
affinity purified by Protein A	
Buffer	0.01M TBS (pH7.4) with 1% BSA, 0.02% Proclin300 and 50% Glycerol.
SUBCELLULAR LOCATION	Endoplasmic reticulum membrane; Single-pass type I membrane protein
SIMILARITY	Belongs to the SEZ6 family. Contains 3 CUB domains. Contains 5 Sushi (CCP/SCR) domains.
Important Note	This product as supplied is intended for research use only, not for use in human, therapeutic or diagnostic applications.

**Background Descriptions**

SEZ6L is a candidate tumor suppressor gene. This protein may contribute to specialized endoplasmic reticulum functions in neurons.

**SEZ6L Polyclonal Antibody - Additional Information**

**Gene ID** 23544

**Other Names**

Seizure 6-like protein, SEZ6L, KIAA0927

**Target/Specificity**

Widely expressed, including adult and fetal brains and lungs. Not expressed in all lung cancer cell lines.

**Dilution**

<span class = "dilution\_WB">WB~~1:1000</span><br \><span class = "dilution\_IHC-P">IHC-P~~N/A</span><br \><span class = "dilution\_IHC-F">IHC-F~~N/A</span><br \><span class

=<span class = "dilution\_IF">IF~1:50~200</span><br \><span class = "dilution\_E">E~N/A</span>

**Format**

0.01M TBS(pH7.4), 0.09% (W/V) sodium azide and 50% Glyce

**Storage**

Store at -20 °C for one year. Avoid repeated freeze/thaw cycles. When reconstituted in sterile pH 7.4 0.01M PBS or diluent of antibody the antibody is stable for at least two weeks at 2-4 °C.

**SEZ6L Polyclonal Antibody - Protein Information**

**Name** SEZ6L

**Synonyms** KIAA0927

**Function**

May contribute to specialized endoplasmic reticulum functions in neurons.

**Cellular Location**

Endoplasmic reticulum membrane; Single-pass type I membrane protein

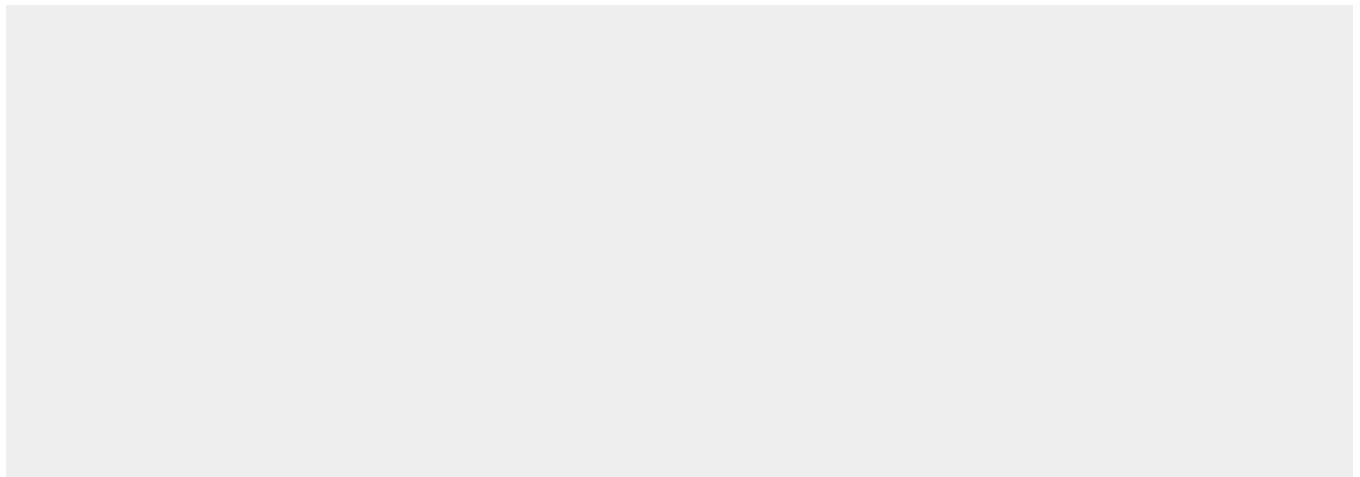
**Tissue Location**

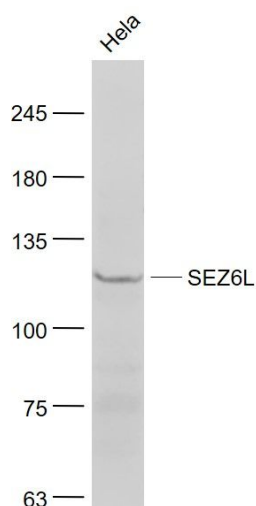
Widely expressed, including adult and fetal brains and lungs. Not expressed in all lung cancer cell lines

**SEZ6L Polyclonal Antibody - Protocols**

Provided below are standard protocols that you may find useful for product applications.

- [Western Blot](#)
- [Blocking Peptides](#)
- [Dot Blot](#)
- [Immunohistochemistry](#)
- [Immunofluorescence](#)
- [Immunoprecipitation](#)
- [Flow Cytometry](#)
- [Cell Culture](#)

**SEZ6L Polyclonal Antibody - Images**



**Sample:**

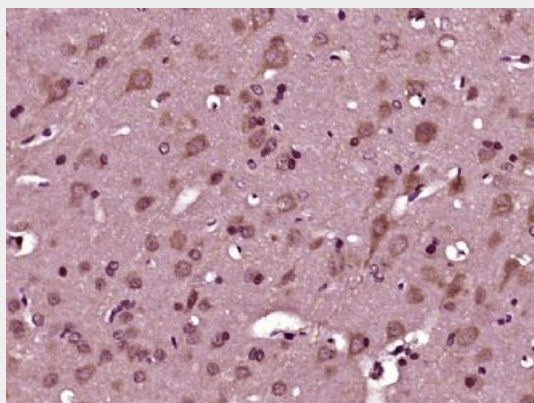
HeLa(Human) Cell Lysate at 30 ug

Primary: Anti- SEZ6L (bs-6103R) at 1/1000 dilution

Secondary: IRDye800CW Goat Anti-Rabbit IgG at 1/20000 dilution

Predicted band size: 109 kD

Observed band size: 110 kD



Paraformaldehyde-fixed, paraffin embedded (rat brain tissue); Antigen retrieval by boiling in sodium citrate buffer (pH6.0) for 15min; Block endogenous peroxidase by 3% hydrogen peroxide for 20 minutes; Blocking buffer (normal goat serum) at 37°C for 30min; Antibody incubation with (SEZ6L) Polyclonal Antibody, Unconjugated (bs-6103R) at 1:400 overnight at 4°C, followed by operating according to SP Kit(Rabbit) (sp-0023) instructions and DAB staining.